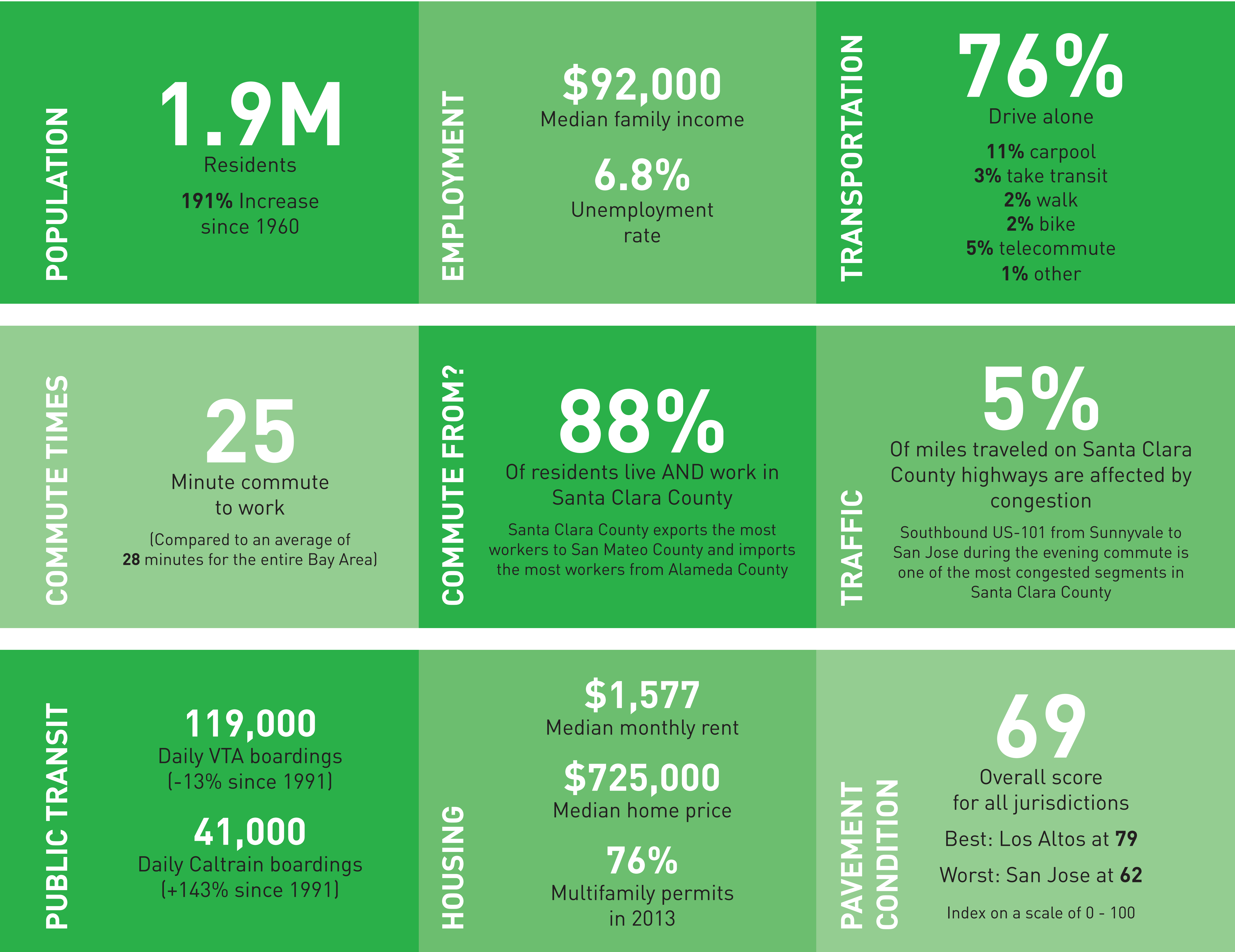


COUNTY FOCUS

Santa Clara County Today

Plan BayArea
2040



Data Sources: Population–California Department of Finance, 2014; Employment–U.S. Census Bureau: American Community Survey, 2013; California Employment Development Department, 2013; Transportation–U.S. Census Bureau: American Community Survey, 2013; Commute Times–U.S. Census Bureau: American Community Survey, 2013; Traffic–Caltrans Performance Monitoring System, 2013; Metropolitan Transportation Commission, 2013; Public Transit–Federal Transit Administration: National Transit Database, 2012; Housing– U.S. Census Bureau: American Community Survey, 2013; Multiple Listing Service Homes Sales Records, 2014; California Homebuilding Foundation/Construction Industry Research Board, 2013; Metropolitan Transportation Commission, 2013 Regional Pavement Condition Report.

What are the current trends in Santa Clara County?

Campbell | Cupertino | Gilroy | Los Altos | Los Altos Hills | Los Gatos | Milpitas | Monte Sereno | Morgan Hill | Mountain View
Palo Alto | San Jose | Santa Clara | Saratoga | Sunnyvale

Understanding what’s happening in Santa Clara County now helps us recognize what issues may become most important as we plan for the future. Here’s a brief snapshot of Santa Clara County and some key issues to consider as we update Plan Bay Area.



TRANSPORTATION: There are many transportation options in Santa Clara County, but last-mile alternatives remain a challenge in many areas.



DIVERSITY: 2.4% of Santa Clara County residents are African-American, 26.8% are Latino, 32.3% are Asian, 34.7% are White, and 3.8% are multiple or other races.

COUNTY FOCUS

PDAs in Santa Clara

Plan BayArea
2040

Locally Nominated Priority Development Areas and Priority Conservation Areas

Santa Clara County is the home of Silicon Valley and the birthplace and now global capital of the high-technology revolution. Today, with over 1.8 million residents and 900,000 jobs, Santa Clara County is the most populous and job-rich county in the San Francisco Bay Area.

Santa Clara County is home to 42 locally nominated PDAs and 17 PCAs.

Priority Development Areas (PDAs)

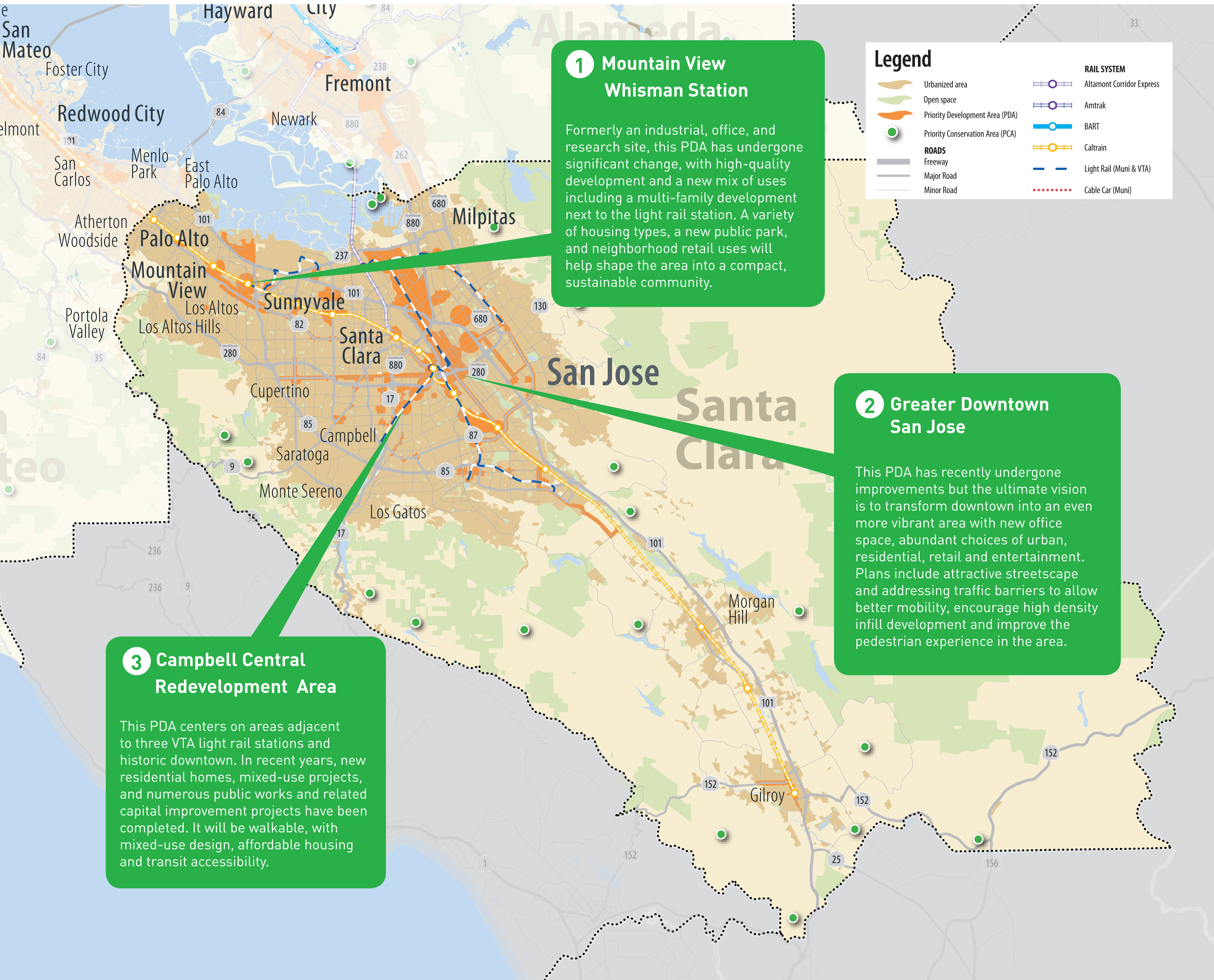
Priority Development Areas (PDAs) are locally designated areas within existing communities that provide infill development opportunities, and are easily accessible to transit, jobs, shopping and services.



Priority Conservation Areas (PCAs)

Priority Conservation Areas (PCAs) are regionally significant open spaces for which there exists a broad consensus for long-term protection and for which public and private funds may be invested to promote their protection. The purpose for identifying Priority Conservation Areas is to highlight near-term opportunities for land conservation in the San Francisco Bay Area that are supported by local consensus.

A Map of Santa Clara County PDAs



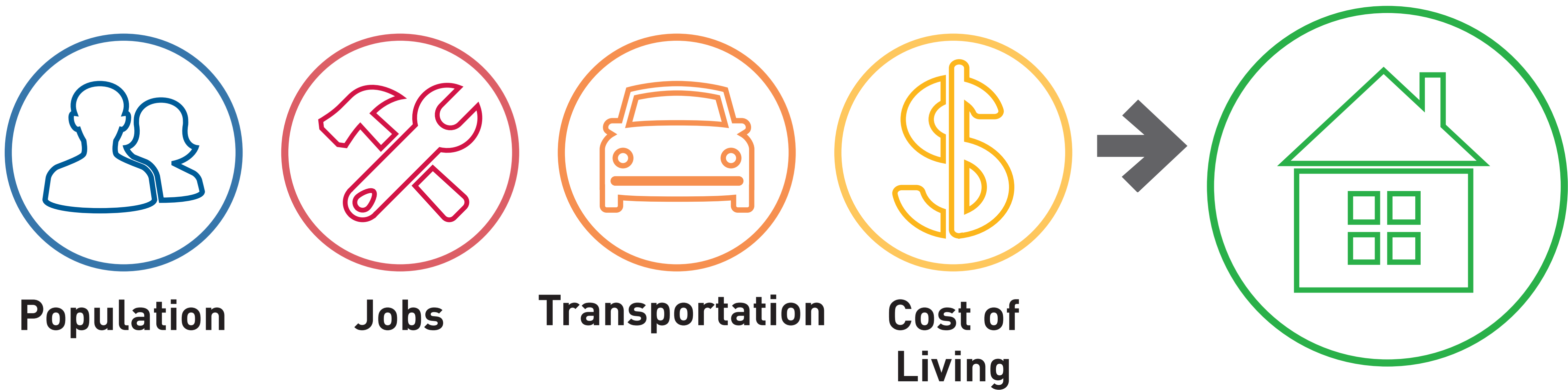
COUNTY FOCUS

Santa Clara Housing

Plan
BayArea
2040

What Housing is Being Built?

Housing reflects the unique values and lifestyles of a community. Factors that influence types of housing include General Plans, zoning, population growth, household size, job availability, access to transportation, income and the cost of living.



Multifamily Homes Grow as Primary Housing Choice in Santa Clara County

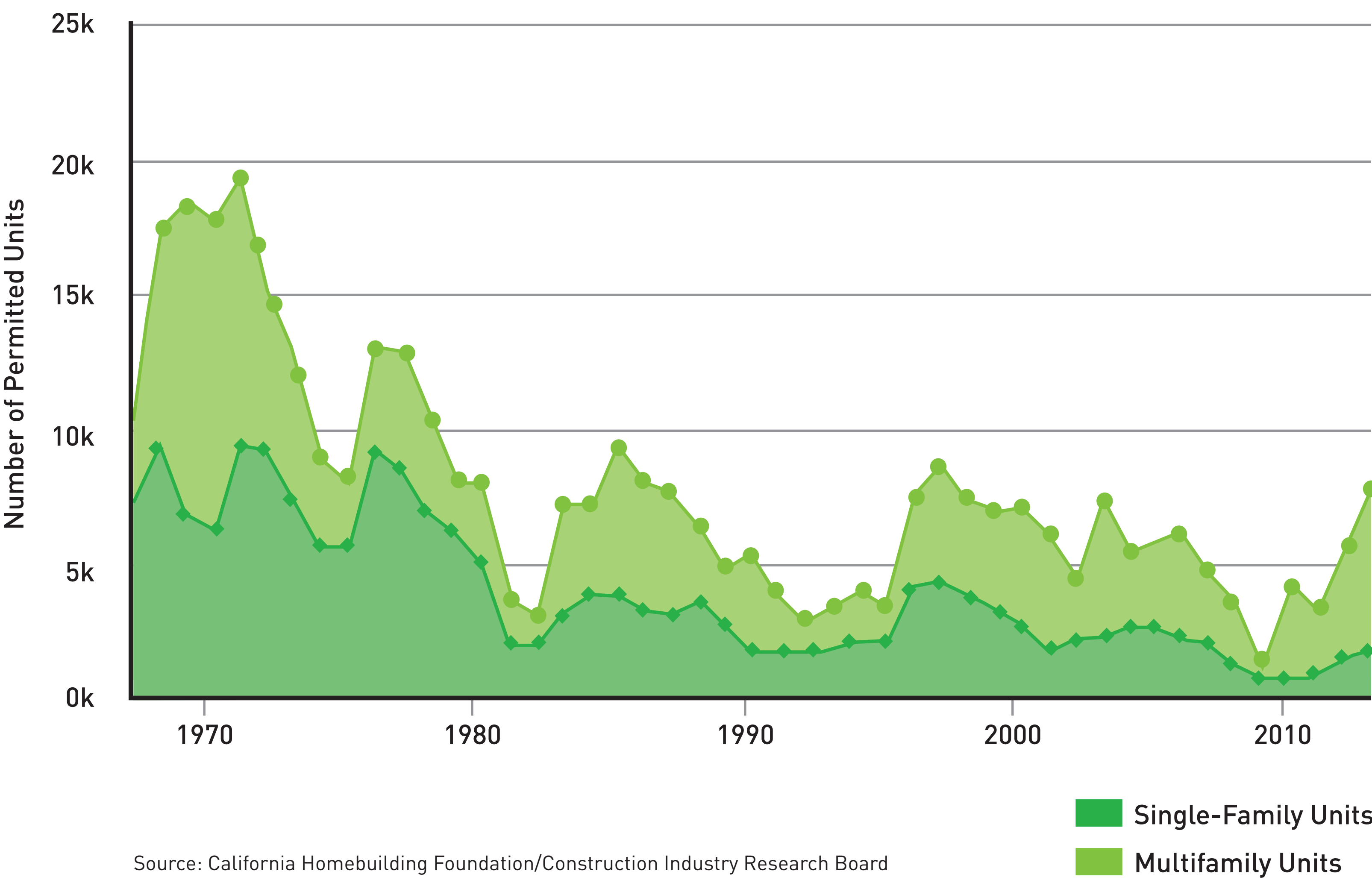
During the period of expansive growth across the Bay Area over the last half-century, most new units were single-family homes. Some parts of the region, by contrast, are shifting more toward multifamily homes, including apartments and duplexes in Priority Development Areas. This is the trend in Santa Clara County, with 76 percent of new housing permitted as multifamily homes.

7,868
housing units permitted
in Santa Clara County in
2013. Of these...

6,009
[76%] were multifamily

Source: California Homebuilding Foundation/Construction Industry Research Board

Historical Trends for Housing Growth in Santa Clara County



70%
of permits are now
for multifamily homes
across the Bay Area,
compared to

40%
25 years ago

Source: California Homebuilding Foundation/Construction Industry Research Board