

Equity Considerations on the Project Level

Attached you will find a set of county maps identifying all of the projects analyzed individually in the project performance assessment. The maps identify projects that serve a community of concern, as well as how those projects support the three equity-related performance targets. Table D-1 accompanies these equity considerations maps, providing specific details on individual projects.

The three equity-related targets are a subset of the 10 targets adopted by MTC and ABAG; they are assessed in the targets assessment element of the broader project performance assessment, as described in the cover memo and Attachment C (note: all materials are available on the OneBayArea website: http://onebayarea.org/plan_bay_area/transportation.htm).

By relying on the targets assessment, this analysis highlights equity considerations contained in the overall assessment, while at the same time looking at projects from a geographical perspective. Projects were identified as serving a community of concern if they were located in a community of concern and if they provided an access point for residents (e.g. train station, freeway on-ramp, etc.).

Three of the ten Plan Bay Area performance targets were used to calculate a project's Equity Targets Score:

- Adequate Housing
- Particulate Matter in CARE Communities
- Low-Income Household Transportation Cost

A project's Equity Targets Score indicates that project's level of support for equity concerns; it can range from +3.0 (Strong Support) to -3.0 (Strong Adverse Impacts). The same ratings and scale from the Targets Assessment were used to examine equity considerations:

- strong support (1)
- moderate support (0.5)
- minimal impact (0)
- moderate adverse impact (-0.5)
- strong adverse impact (-1)

For example, a project with a target rating marked "STRONG" has strong support for that target and receives +1.0 point towards its equity targets score.

The criteria for each of the three equity-related performance targets are shown on the following pages.

1. Adequate Housing

Criteria

House 100% of the region's projected 25-year growth by income level without displacing current low-income residents

The assessment of a project's impact on housing was dependent upon two criteria: potential for housing growth and past track record on affordable housing of the jurisdictions in which the project is located. The strongest support were for projects in jurisdictions that had: (1) above average track record for permitting low and very low income housing relative to their Regional Housing Needs Assessment (RHNA) targets; and (2) potential for a high amount of housing growth in the future, as measured by units included the Focused Growth scenario.

Guidelines for Applying Criteria

Potential for Housing Growth

Based on the housing growth from the Focused Growth Scenario, a project would receive support based on the numbers below and as shown in Exhibit C-1, Table 1:

- Cities below 1,500 units of production were awarded **minimal (0)**
- 1,500 to 10,000 **support of target (0.5)**

Support for Affordable Housing

Based on feedback the Adequate Housing Target, the assessment was revised from the original approach to sufficiently consider how projects support production of low income units in Bay Area jurisdictions. With input from ABAG staff, the Adequate Housing target has been re-evaluated to consider jurisdictions' track records in meeting their Regional Housing Needs Allocation (RHNA) targets for the past production of Very Low and Low income housing units. These results are reflected in revised Targets Assessment scores.

With data compiled from ABAG's housing report in 2007 "A Place to Call Home – Housing in the San Francisco Bay Area," we calculated the number of permitted units as a share of each jurisdiction's RHNA target by income level for years 1999 through 2006. Overall, 23 cities were identified that performed better than the regional averages for both very low (above 44%) and low (above 75%) income housing and 53 that were below the regional averages.

Projects that were multi-county projects were given a score for both housing production and RHNA based on the individual cities and unincorporated areas. The overall county RHNA score was determined by the majority of projects in one category (Above average, neither above or below and below average). If 2/3 of the cities in a county had below average production, then the county would receive a -0.5. If there was not a clear majority of cities in one category, then the county would be scored minimal or 0 points.

RHNA Rating (See Exhibit C-1, Table 2)

- **Strong** rating if above the regional average for both very low and low income housing categories **(0.5)**
- **Minimal** rating if not above or below the regional average for both categories **(0)**
- **Adverse** rating if below the regional average for very low and low income housing categories **(-0.5)**

Some projects that were multi-county such as BART, Capital Corridor or ACE were scored based upon the cities served by the projects in the same manner as described above.

2. Healthy and Safe Communities (PM in CARE Communities)

Criteria

Achieve greater reductions of PM in CARE communities

If a project is located in a CARE community:

Projects support the target if they have potential to reduce particulate (PM) emissions from vehicles by reducing VMT or providing an alternative to driving alone. Projects likely to increase VMT are assumed to have an adverse impact on the target.

If a project is not located in a CARE community:

Projects are assumed to have minimal impact on PM emissions in CARE communities.

Guidelines for Applying Criteria

Because the criteria for 3a and 3b are nearly identical to those for the CO₂ reduction target and because the particulate targets are focused largely on tailpipe emissions which correlate with CO₂ emissions, projects generally received the same rating for these targets as they did for CO₂ reduction.

The results for target 3c are reported separately in the Project Assessment Equity Considerations. Projects were mapped against the Bay Area Air Quality Management District (BAAQMD) six Community Air Risk Evaluation (CARE) Impacted Communities. These are areas that are highly impacted from outdoor Toxic Air Contaminants (TAC) due to their proximity to ports or freeways and a high density of sensitive populations (seniors, children and low income residents). Projects likely to increase transit, biking or walking and are located in a CARE community are considered to support the target. Conversely, projects that increase VMT and are located in a CARE community are considered to adversely affect this target. The degree of support or adverse impact is a function of the project scale and likely increase or decrease in VMT. Projects receive a minimal rating if they do not affect VMT substantially, even if they are located in a CARE community. Projects that are not located in a CARE community also receive a minimal rating.

3. Equitable Access (Low Income Household Transportation Cost)

Criteria

Decrease by 10% the share of low-income and lower middle income residents' household income consumed by transportation and housing

Projects were supportive of the target if they included transit enhancements that provided a lower cost transportation alternative to driving. The degree of support would vary by the operator's current low-income ridership.

Guidelines for Applying Criteria

Transit projects were determined to provide a lower cost alternative to auto ownership and were supportive of this target. Transit projects were assessed based on the percentage of the total region's low income riders and the total number of low income riders served by the operator. The percentages of low income riders were based on the Transit Demographics Survey and the 2011 Statistical Summary of Bay Area Transit Operators. The points breakdown is shown below and in Exhibit C-1, Table 3:

- **Strong** – Low income riders constitute over 40% of total ridership or operator serves over 10% of the region's total low income transit riders
- **Moderate** – Operator serves over 0.5% of the region's total low income transit riders
- **Minimal** – Operator serves less than 0.5% of the region's total low income transit riders

By awarding strong support to operators that have a high share (over 40%) of low income riders, this acknowledges that many small operators provide service to low income groups but carry a smaller share of the region's total low income ridership. It also rewards the larger operators that carry a high number of the region's low income population.

No adverse rating was given for highway projects that did not provide low-cost options since these projects did not take away choices for low and middle income residents.

Map ID	Project ID	Project Name	County	Project Type	EQUITY-RELATED TARGETS			Equity Targets Score	Serves Community of Concern?*	In Community of Concern?	In CARE Community?
					Housing	PM in CARE	Low Income HH Transportation Cost				
1	240180	BART Bay Fair Connection	Alameda	Transit Efficiency	MODERATE	MODERATE	STRONG	2.0	Yes	Yes	Yes
2	22062	Irvington BART Station	Alameda	Transit Efficiency	MINIMAL	MINIMAL	STRONG	1.0	Yes	Yes	No
3	22455	AC Transit East Bay BRT	Alameda/ 3434	Transit Efficiency	MODERATE	MODERATE	STRONG	2.0	Yes	Yes	Yes
4	22780	AC Transit Grand-MacArthur BRT	Alameda/ 3434	Transit Efficiency	MODERATE	MODERATE	STRONG	2.0	Yes	Yes	Yes
5	22667	BART to Livermore (Phases 1 & 2: Rail Extension)	Alameda	Transit Expansion	MINIMAL	MINIMAL	STRONG	1.0	No	No	No
6	98207T, 98207R	Alameda-Oakland BRT & I-880 Broadway/Jackson Interchange Improvements	Alameda	Transit Efficiency	MINIMAL	MODERATE	STRONG	1.5	Yes	Yes	Yes
7	230101	Union City Commuter Rail Station + Dumbarton Rail Segment G Improvements	Alameda/ 3434	Transit Efficiency	MODERATE	MODERATE	STRONG	2.0	Yes	Yes	Yes
8	240113	BART Hayward Maintenance Complex	Alameda	Transit Efficiency	MINIMAL	MINIMAL	STRONG	1.0	No	Yes	No
9	240196	BART to Livermore (Phase 1: 1-Station Rail Extension with Bus Enhancements)	Alameda	Transit Expansion	MINIMAL	MINIMAL	STRONG	1.0	No	No	No
10	LBART	BART to Livermore (Phase 1: 1-Station Rail Extension with DMU)	Alameda	Transit Expansion	MINIMAL	MINIMAL	STRONG	1.0	No	No	No
11	580_BUS	I-580 Express Bus (Dublin to Livermore)	Alameda	Transit Efficiency	MINIMAL	MINIMAL	STRONG	1.0	No	No	No
12	22089	Martinez Subdivision & Rail Improvements	Alameda	Transit Efficiency	MODERATE	MINIMAL	STRONG	1.5	No	Yes	Yes
13	22765	I-580/I-680 Interchange HOV Direct Connectors	Alameda	Road Efficiency	MODERATE	MINIMAL	MINIMAL	0.5	No	No	No
14	240318	I-80 Ashby Interchange Improvements	Alameda	Road Efficiency	STRONG	MINIMAL	MINIMAL	1.0	No	No	Yes
15	22769	I-880 23rd/29th Interchange Improvements	Alameda	Road Efficiency	MINIMAL	MINIMAL	MINIMAL	0.0	Yes	Yes	Yes
16	22779	I-880/SR-262 Interchange Improvements (Phase 2: Warren Avenue Grade Separation)	Alameda	Road Efficiency	MINIMAL	MINIMAL	MINIMAL	0.0	No	No	No
17	240052	I-880 Whipple Road Interchange Improvements	Alameda	Road Efficiency	MINIMAL	MINIMAL	MINIMAL	0.0	No	No	No
18	240317	Port of Oakland Wharf Replacement & Berth Deepening (Berths 60-63)	Alameda	Other	MINIMAL	MINIMAL	MINIMAL	0.0	No	Yes	Yes
19	240657	I-580 Corridor Spot Intersection Improvements	Alameda	Road Efficiency	MODERATE	MINIMAL	MINIMAL	0.5	No	No	No
20	21100	I-580 Vasco Road Interchange Improvements & Auxiliary Lanes	Alameda	Road Efficiency	MINIMAL	MINIMAL	MINIMAL	0.0	No	No	No
21	22082	Port of Oakland 7th Street Grade Separation & Roadway Improvements	Alameda	Road Efficiency	MINIMAL	MINIMAL	MINIMAL	0.0	Yes	Yes	Yes
22	22760	Port of Oakland Outer Harbor Intermodal Terminals	Alameda	Other	MINIMAL	MINIMAL	MINIMAL	0.0	No	Yes	Yes
23	230103	Decoto Neighborhood Grade Separation	Alameda	Road Efficiency	MODERATE	MINIMAL	MINIMAL	0.5	Yes	Yes	No
24	240024	Oakland Army Base Infrastructure Improvements	Alameda	Other	MINIMAL	MINIMAL	MINIMAL	0.0	No	Yes	Yes
25	240279	Mandela Parkway & 3rd Street Corridor Street Reconstruction	Alameda	Road Efficiency	MINIMAL	MINIMAL	MINIMAL	0.0	Yes	Yes	Yes
26	240562	SR-92 Clawiter/Whitesell Interchange Improvements	Alameda	Road Efficiency	MINIMAL	MINIMAL	MINIMAL	0.0	No	No	No
27	94506	Fremont/Union City East-West Connector	Alameda	Arterial Expansion	MODERATE	MINIMAL	MINIMAL	0.5	No	No	No
28	230099	I-580/I-680 Interchange Improvements (Phase 1)	Alameda	Road Efficiency	MODERATE	MINIMAL	MINIMAL	0.5	No	No	No
29	240062, 22776	SR-84/I-680 Interchange Improvements + SR-84 Widening (Jack London to I-680)	Alameda	Highway Expansion	MINIMAL	MINIMAL	MINIMAL	0.0	No	No	No
30	240053	Whipple Road Widening (Mission Boulevard to I-880)	Alameda	Highway Expansion	MINIMAL	MINIMAL	MINIMAL	0.0	Yes	Yes	No

* = serving a CoC is defined as being located within a CoC and providing an access point for residents

Map ID	Project ID	Project Name	County	Project Type	EQUITY-RELATED TARGETS			Equity Targets Score	Serves Community of Concern?*	In Community of Concern?	In CARE Community?
					Housing	PM in CARE	Low Income HH Transportation Cost				
31	22343	I-680 Express Bus Service Frequency Improvements (Phase 2)	Contra Costa	Transit Efficiency	MODERATE	MODERATE	MODERATE	1.5	Yes	Yes	Yes
32	230321	Hercules Intermodal Station (Phases 2, 3, and 4)	Contra Costa	Transit Efficiency	STRONG	MINIMAL	MINIMAL	1.0	No	No	No
33	22360	I-80 San Pablo Dam Road Interchange Improvements	Contra Costa	Road Efficiency	STRONG	MINIMAL	MINIMAL	1.0	Yes	Yes	Yes
34	22353, 21223	I-680 HOV Gap Closure in Walnut Creek (N. Main to Livorna)	Contra Costa	Road Efficiency	MINIMAL	MINIMAL	MINIMAL	0.0	No	No	No
35	22604	Vasco Road Safety & Operational Improvements (Brentwood to San Joaquin County line)	Contra Costa	Highway Expansion	MODERATE	MINIMAL	MINIMAL	0.5	No	No	No
36	21205, 22350	I-680/SR-4 Interchange Improvements + SR-4 Widening (Morello Avenue to SR-242)	Contra Costa	Highway Expansion	MINIMAL	MINIMAL	MINIMAL	0.0	No	No	No
37	22605	SR-4 Bypass Completion (SR-160 to Walnut Avenue)	Contra Costa	Highway Expansion	STRONG	MINIMAL	MINIMAL	1.0	No	No	No
38	22981	SR-4 Widening (Marsh Creek Road to San Joaquin County line)	Contra Costa	Highway Expansion	MINIMAL	MINIMAL	MINIMAL	0.0	No	No	No
39	98133	Pacheco Boulevard Widening (Blum Road to Arthur Road)	Contra Costa	Highway Expansion	MINIMAL	MINIMAL	MINIMAL	0.0	No	No	No
40	22400	SR-239 Expressway Construction (Brentwood to Tracy)	Contra Costa	Highway Expansion	MINIMAL	MINIMAL	MINIMAL	0.0	No	No	No
41	94050	SR-4 Upgrade to Full Freeway (Phase 2: Cummings Skyway to I-80)	Contra Costa	Highway Expansion	MINIMAL	MINIMAL	MINIMAL	0.0	No	No	No
42	230252	Marin Countywide Bus Service Frequency Improvements	Marin	Transit Efficiency	MINIMAL	MINIMAL	MODERATE	0.5	Yes	Yes	No
43	21325	US-101 Twin Cities Corridor Improvements	Marin	Road Efficiency	MINIMAL	MINIMAL	MINIMAL	0.0	No	No	No
44	240644	Marin Countywide Senior Mobility Program	Marin	Safety	MINIMAL	MINIMAL	MODERATE	0.5	Yes	Yes	No
45	240182	BART Metro Program	Multi-County	Transit Efficiency	MODERATE	STRONG	STRONG	2.5	Yes	Yes	Yes
46	00BART	BART Service Frequency Improvements	Multi-County	Transit Efficiency	MODERATE	STRONG	STRONG	2.5	Yes	Yes	Yes
47	230603	California High-Speed Train - Bay Area to Central Valley	Multi-County	Transit Expansion	MODERATE	STRONG	MODERATE	2.0	Yes	Yes	Yes
48	240134, 21627	Caltrain Service Frequency Improvements (6-Train Service during Peak Hours) + Electrification (SF to Tamien)	Multi-County	Transit Efficiency	MODERATE	STRONG	MODERATE	2.0	Yes	Yes	Yes
49	240521, 21627, 240134	Caltrain Vision (10-Train Service during Peak Hours) + Electrification (SF to Tamien)	Multi-County/ 3434	Transit Efficiency	MODERATE	STRONG	MODERATE	2.0	Yes	Yes	Yes
50	240018	Dumbarton Corridor Express Bus	Multi-County	Transit Efficiency	MODERATE	STRONG	STRONG	2.5	Yes	Yes	Yes
51	22009	Capitol Corridor Service Frequency Improvements (Oakland to San Jose)	Multi-County/ 3434	Transit Efficiency	MODERATE	MODERATE	MODERATE	1.5	Yes	Yes	Yes
52	240216	Dumbarton Rail	Multi-County/ 3434	Transit Expansion	MODERATE	STRONG	MINIMAL	1.5	Yes	Yes	Yes
53	240699	AC Transit Service Frequency Improvements (Restoration of 2009 Funding Levels)	Multi-County	Transit Efficiency	MODERATE	MODERATE	STRONG	2.0	Yes	Yes	Yes
54	00ACT1	AC Transit Frequent Transit Network	Multi-County	Transit Efficiency	MODERATE	MODERATE	STRONG	2.0	Yes	Yes	Yes
55	240676, 240675, 240677	SMART (Phase 2: Extensions to Cloverdale & Larkspur + IOS Cost Deferrals)	Multi-County/ 3434	Transit Expansion	MINIMAL	MINIMAL	MODERATE	0.5	No	Yes	No
56	n/a	BART Station Capacity Improvements	Multi-County	Transit Efficiency	MODERATE	MODERATE	STRONG	2.0	Yes	Yes	Yes
57	n/a	BART Station Access Improvements	Multi-County	Transit Efficiency	MODERATE	MODERATE	STRONG	2.0	Yes	Yes	Yes
58	22511, 22512, 22122, 230613, 22120, 230581	WETA Service Expansion (Treasure Island, Berkeley/Albany, Richmond, Hercules, and Redwood City)	Multi-County/ 3434	Transit Expansion	MODERATE	MODERATE	MINIMAL	1.0	Yes	Yes	Yes
59	230055	Golden Gate Ferry Service Frequency Improvements	Multi-County	Transit Efficiency	MODERATE	MODERATE	MODERATE	1.5	No	No	Yes

* = serving a CoC is defined as being located within a CoC and providing an access point for residents

Map ID	Project ID	Project Name	County	Project Type	EQUITY-RELATED TARGETS			Equity Targets Score	Serves Community of Concern?*	In Community of Concern?	In CARE Community?
					Housing	PM in CARE	Low Income HH Transportation Cost				
60	230604	Bay Bridge Contraflow Lane	Multi-County	Pricing	MODERATE	STRONG	MODERATE	2.0	No	Yes	Yes
61	22227, 240328, 240334	Geneva Avenue Corridor Improvements (Roadway Extension, BRT, and Southern Intermodal Terminal)	Multi-County	Transit Efficiency	MODERATE	MODERATE	STRONG	2.0	Yes	Yes	Yes
62	230219, 230314	Golden Gate Bus Service Frequency Improvements	Multi-County	Transit Efficiency	MODERATE	MODERATE	MODERATE	1.5	No	No	Yes
63	98139	ACE Expansion	Multi-County/ 3434	Transit Efficiency	MODERATE	MODERATE	MINIMAL	1.0	No	Yes	Yes
64	240036	Caltrain Communications-Based Overlay Signal System (CBOSS) and Positive Train Control System (PTC)	Multi-County	Transit Efficiency	MINIMAL	MINIMAL	MINIMAL	0.0	No	Yes	Yes
65	240060, 240523	US-101 HOV Lanes (Whipple to Cesar Chavez)	Multi-County	Road Efficiency	MODERATE	MODERATE	MINIMAL	1.0	Yes	Yes	Yes
66	22003	Capitol Corridor Reliability Improvements (Phase 2)	Multi-County	Road Efficiency	MODERATE	MINIMAL	MINIMAL	0.5	Yes	Yes	Yes
67	22657	I-580 Westbound Truck Climbing Lane (Altamont Pass)	Multi-County	Road Efficiency	MODERATE	MINIMAL	MINIMAL	0.5	No	No	No
68	240140	Caltrain At-Grade Crossing Improvements	Multi-County	Transit Efficiency	MODERATE	MINIMAL	MINIMAL	0.5	No	No	Yes
69	240571	I-80/I-880 Congestion Pricing and Clean Vehicle Incentive Program	Multi-County	Pricing	MODERATE	MODERATE	MINIMAL	1.0	Yes	Yes	Yes
70	98147, 240691	Marin-Sonoma Narrows (Phase 2)	Multi-County	Highway Expansion	MINIMAL	MINIMAL	MINIMAL	0.0	No	No	No
71	HOTe	CTC Application + Alameda County Authorized Lanes Express Lanes Network	Multi-County	Express Lanes Network	MODERATE	MODERATE AD	MINIMAL	0.0	Yes	Yes	Yes
72	240122	SR-29 Complete Streets Improvements	Napa	Road Efficiency	MINIMAL	MINIMAL	MINIMAL	0.0	No	No	No
73	240617	SR-29 HOV Lanes & BRT (Napa Junction to Vallejo)	Napa	Road Efficiency	MODERATE	MINIMAL	MINIMAL	0.5	Yes	Yes	No
74	94075	SR-12 Jameson Canyon Project (Phase 3: New SR-12/SR-29 Interchange)	Napa	Road Efficiency	MINIMAL	MINIMAL	MINIMAL	0.0	No	No	No
75	22247	Regional Bikeway Network	Regional	Bike/Ped	MODERATE	STRONG	MODERATE	2.0	Yes	Yes	Yes
76	240410	Transportation for Livable Communities	Regional	TLC	MODERATE	STRONG	MODERATE	2.0	Yes	Yes	Yes
77	240690	Lifeline Program	Regional	Lifeline/New Freedom	MODERATE	MODERATE	STRONG	2.0	Yes	Yes	Yes
78	NewFree	New Freedom	Regional	Lifeline/New Freedom	MODERATE	MODERATE	STRONG	2.0	Yes	Yes	Yes
79	LS&R	Local Streets and Roads Capital Maintenance Needs	Regional	Maintenance	MODERATE	MODERATE	MODERATE	1.5	Yes	Yes	Yes
80	Transitshort	Transit Capital Maintenance Needs	Regional	Maintenance	MODERATE	MODERATE	MODERATE	1.5	Yes	Yes	Yes
81	230419	Freeway Performance Initiative	Regional	FPI	MODERATE	MINIMAL	MODERATE	1.0	Yes	Yes	Yes
82	230550	Climate Initiatives	Regional	Climate	MODERATE	MODERATE	MODERATE	1.5	Yes	Yes	Yes
83	240589	EV Solar Installation [BAAQMD program]	Regional	Climate	MODERATE	MINIMAL	MINIMAL	0.5	Yes	Yes	Yes
84	240577	Heavy-Duty Truck Replacement [BAAQMD program]	Regional	Climate	MODERATE	STRONG	MINIMAL	1.5	No	Yes	Yes
85	240582	Truck & Motorcycle Retirement [BAAQMD program]	Regional	Climate	MODERATE	STRONG	MINIMAL	1.5	Yes	Yes	Yes
86	240674	Transbay Transit Center - Phase 3 (Pedestrian Connector Tunnel to BART/Muni)	San Francisco	Transit Expansion	MODERATE	STRONG	STRONG	2.5	No	No	Yes
87	230290	Transbay Transit Center - Phase 2B (Caltrain Downtown Extension)	San Francisco/ 3434	Transit Expansion	MODERATE	STRONG	MODERATE	2.0	Yes	Yes	Yes
88	240171	SFMTA Transit Effectiveness Project	San Francisco	Transit Efficiency	MODERATE	MODERATE	STRONG	2.0	Yes	Yes	Yes
89	240526	SFCTA Transit Performance Initiative	San Francisco	Transit Efficiency	MODERATE	MODERATE	STRONG	2.0	Yes	Yes	Yes

* = serving a CoC is defined as being located within a CoC and providing an access point for residents

Map ID	Project ID	Project Name	County	Project Type	EQUITY-RELATED TARGETS			Equity Targets Score	Serves Community of Concern?*	In Community of Concern?	In CARE Community?
					Housing	PM in CARE	Low Income HH Transportation Cost				
90	230161	Van Ness Avenue BRT	San Francisco/3434	Transit Efficiency	MODERATE	MODERATE	STRONG	2.0	Yes	Yes	Yes
91	230164	Geary Boulevard BRT	San Francisco	Transit Efficiency	MODERATE	MODERATE	STRONG	2.0	Yes	Yes	Yes
92	240155	Better Market Street	San Francisco	Transit Efficiency	MODERATE	MODERATE	STRONG	2.0	Yes	Yes	Yes
93	240522	Congestion Pricing Pilot	San Francisco	Pricing	MODERATE	STRONG	MINIMAL	1.5	Yes	Yes	Yes
94	00MUNI	Muni Service Frequency Improvements	San Francisco	Transit Efficiency	MODERATE	MODERATE	STRONG	2.0	Yes	Yes	Yes
95	22415	Historic Streetcar Expansion Program	San Francisco	Transit Efficiency	MODERATE	MODERATE	STRONG	2.0	Yes	Yes	Yes
96	240545	Parkmerced Light Rail Corridor	San Francisco	Transit Efficiency	MODERATE	MINIMAL	STRONG	1.5	No	No	No
97	240557	Oakdale Caltrain Station	San Francisco	Transit Efficiency	MODERATE	MODERATE	MODERATE	1.5	Yes	Yes	Yes
98	240158	Eastern Neighborhoods (EN TRIPS) Circulation & Streetscape Improvements	San Francisco	Road Efficiency	MODERATE	MODERATE	MODERATE	1.5	Yes	Yes	Yes
99	240694	Treasure Island Congestion Pricing	San Francisco	Pricing	MODERATE	MINIMAL	MODERATE	1.0	Yes	Yes	No
100	240147	Southeast Waterfront Transportation Improvements	San Francisco	Transit Efficiency	MODERATE	MODERATE	STRONG	2.0	Yes	Yes	Yes
101	240163	Hunters Point & Candlestick Point Local Road Network	San Francisco	Road Efficiency	MODERATE	MINIMAL	MODERATE	1.0	Yes	Yes	Yes
102	240344	SFpark	San Francisco	Parking	MODERATE	MODERATE	MINIMAL	1.0	Yes	Yes	Yes
103	240358	Mission Bay Local Road Network	San Francisco	Arterial Expansion	MODERATE	MINIMAL	MODERATE	1.0	Yes	Yes	Yes
104	240035	Caltrain Terminal Station Improvements (4th & King)	San Francisco	Transit Efficiency	MODERATE	MINIMAL	MODERATE	1.0	Yes	Yes	Yes
105	230555	I-80 Yerba Buena Island Interchange Improvements	San Francisco	Road Efficiency	MODERATE	MINIMAL	MINIMAL	0.5	Yes	Yes	No
106	240026	SamTrans El Camino BRT	San Mateo	Transit Efficiency	MODERATE	MODERATE	STRONG	2.0	Yes	Yes	Yes
107	22274	ITS Improvements in San Mateo County	San Mateo	Road Efficiency	MODERATE	MINIMAL	MODERATE	1.0	Yes	Yes	Yes
108	240590	El Camino Real Complete Streets Improvements	San Mateo	Road Efficiency	MODERATE	MODERATE	MODERATE	1.5	Yes	Yes	Yes
109	22268	San Mateo Countywide Shuttle Service Frequency Improvements	San Mateo	Transit Efficiency	MODERATE	MINIMAL	STRONG	1.5	Yes	Yes	Yes
110	21602	US-101 Broadway Interchange Improvements	San Mateo	Road Efficiency	MINIMAL	MINIMAL	MINIMAL	0.0	No	No	No
111	21603	US-101 Woodside Road Interchange Improvements	San Mateo	Road Efficiency	MINIMAL	MINIMAL	MINIMAL	0.0	Yes	Yes	Yes
112	21606	US-101 Willow Road Interchange Improvements	San Mateo	Road Efficiency	MINIMAL	MINIMAL	MINIMAL	0.0	Yes	Yes	Yes
113	21613	SR-92 Improvements (Phase 1: San Mateo Bridge to I-280)	San Mateo	Road Efficiency	MODERATE	MINIMAL	MINIMAL	0.5	No	No	No
114	22279	US-101 Produce Road Interchange Improvements	San Mateo	Road Efficiency	MODERATE	MINIMAL	MINIMAL	0.5	No	No	No
115	22756	US-101 Candlestick Point Interchange Improvements	San Mateo	Road Efficiency	MINIMAL	MINIMAL	MINIMAL	0.0	No	No	Yes
116	240064	Caltrain Grade Separations (Phase 1: San Mateo County)	San Mateo	Transit Efficiency	MODERATE	MINIMAL	MINIMAL	0.5	No	No	No
117	21604	US-101 Auxiliary Lane Modifications (Oyster Point to San Francisco County line)	San Mateo	Road Efficiency	MINIMAL	MINIMAL	MINIMAL	0.0	No	No	No
118	21615	I-280/SR-1 Interchange Improvements	San Mateo	Road Efficiency	MINIMAL	MINIMAL	MINIMAL	0.0	No	No	No
119	22229	US-101 Sierra Point Parkway Interchange Improvements + Lagoon Way Extension	San Mateo	Road Efficiency	MINIMAL	MINIMAL	MINIMAL	0.0	No	No	No

* = serving a CoC is defined as being located within a CoC and providing an access point for residents

Map ID	Project ID	Project Name	County	Project Type	EQUITY-RELATED TARGETS			Equity Targets Score	Serves Community of Concern?*	In Community of Concern?	In CARE Community?
					Housing	PM in CARE	Low Income HH Transportation Cost				
120	22230	I-280 Auxiliary Lanes (Hickey Boulevard to I-380)	San Mateo	Road Efficiency	MINIMAL	MINIMAL	MINIMAL	0.0	No	No	No
121	94644	SR-92 Westbound Slow-Vehicle Climbing Lane (I-280 to SR-35)	San Mateo	Road Efficiency	MODERATE	MINIMAL	MINIMAL	0.5	No	No	No
122	21612	Dumbarton Bridge/US-101 Access Improvements (Phase 1)	San Mateo	Road Efficiency	MINIMAL	MINIMAL	MINIMAL	0.0	Yes	Yes	Yes
123	240114	SR-1 Safety & Operational Improvements (Pacifica to Half Moon Bay)	San Mateo	Road Efficiency	MODERATE AD	MINIMAL	MINIMAL	-0.5	No	No	No
124	22282	US-101 Operational Improvements (near US-101/SR-92 Interchange)	San Mateo	Road Efficiency	MINIMAL	MINIMAL	MINIMAL	0.0	No	No	No
125	98204	SR-1 Widening (Fassler Avenue to Westport Drive)	San Mateo	Highway Expansion	MODERATE AD	MINIMAL	MINIMAL	-0.5	No	No	No
126	240119	VTa El Camino BRT	Santa Clara	Transit Efficiency	STRONG	MODERATE	STRONG	2.5	Yes	Yes	Yes
127	240375	BART to San Jose/Santa Clara (Phase 2: Berryessa to Santa Clara)	Santa Clara/ 3434	Transit Expansion	MINIMAL	STRONG	STRONG	2.0	Yes	Yes	Yes
128	22019	Downtown East Valley (Phase 2: LRT)	Santa Clara/ 3434	Transit Expansion	STRONG	MODERATE	STRONG	2.5	Yes	Yes	Yes
129	22956	Capitol Expressway Light Rail Extension (Phase 2: to Eastridge Transit Center)	Santa Clara	Transit Expansion	STRONG	MODERATE	STRONG	2.5	Yes	Yes	Yes
130	22978	Capitol Expressway Light Rail Extension (Phases 2 & 3: to Nieman)	Santa Clara	Transit Expansion	STRONG	MODERATE	STRONG	2.5	Yes	Yes	Yes
131	98119	Vasona Light Rail Extension (Phase 2)	Santa Clara	Transit Expansion	MODERATE	MINIMAL	STRONG	1.5	No	No	No
132	230547	Monterey Highway BRT	Santa Clara	Transit Efficiency	MODERATE	MODERATE	STRONG	2.0	Yes	Yes	Yes
133	230554	Sunnyvale-Cupertino BRT	Santa Clara	Transit Efficiency	MINIMAL	MINIMAL	STRONG	1.0	Yes	Yes	No
134	21760	Caltrain Double-Track Improvements (San Jose to Gilroy)	Santa Clara	Transit Efficiency	MODERATE	MODERATE	MODERATE	1.5	Yes	Yes	Yes
135	230534	Caltrain Electrification (Tamien to Gilroy)	Santa Clara	Transit Efficiency	MODERATE	MODERATE	MODERATE	1.5	Yes	Yes	Yes
136	240494	ITS Improvements in Santa Clara County	Santa Clara	Road Efficiency	MODERATE	MINIMAL	MODERATE	1.0	Yes	Yes	Yes
137	22965	New US-101 Mabury/Taylor Interchange	Santa Clara	Arterial Expansion	STRONG	MINIMAL	MINIMAL	1.0	Yes	Yes	Yes
138	22979	New US-101 Zanker/Skyport/Fourth Street Interchange	Santa Clara	Arterial Expansion	STRONG	MINIMAL	MINIMAL	1.0	No	No	Yes
139	240437	US-101 Braided Ramps (Capitol Expressway to Yerba Buena Road)	Santa Clara	Arterial Expansion	STRONG	MINIMAL	MINIMAL	1.0	No	No	No
140	240441	US-101/Oregon Expressway/Embarcadero Road Interchange Improvements	Santa Clara	Arterial Expansion	STRONG	MINIMAL	MINIMAL	1.0	No	No	Yes
141	21719	I-880/I-280/Stevens Creek Boulevard Interchange Improvements	Santa Clara	Arterial Expansion	STRONG	MINIMAL	MINIMAL	1.0	No	No	No
142	230537	I-280 Winchester Boulevard Interchange Improvements	Santa Clara	Arterial Expansion	STRONG	MINIMAL	MINIMAL	1.0	No	No	No
143	240048	Caltrain Diridon Station Track Capacity Expansion (Phases 2 & 3)	Santa Clara	Transit Efficiency	STRONG	MINIMAL	MODERATE	1.5	No	No	Yes
144	240063	Caltrain Terminal Station Improvements (San Jose Diridon)	Santa Clara	Transit Efficiency	STRONG	MINIMAL	MODERATE	1.5	No	No	Yes
145	240429	I-880/US-101 Interchange Improvements	Santa Clara	Arterial Expansion	STRONG	MINIMAL	MINIMAL	1.0	No	Yes	Yes
146	240444	US-101/SR-237 Interchange Improvements	Santa Clara	Arterial Expansion	STRONG	MINIMAL	MINIMAL	1.0	No	Yes	No
147	240671	New I-280 Senter Road Interchange	Santa Clara	Arterial Expansion	STRONG	MINIMAL	MINIMAL	1.0	Yes	Yes	Yes
148	230337	New Lawrence Expressway Interchange (Monroe Street)	Santa Clara	Arterial Expansion	MODERATE	MINIMAL	MINIMAL	0.5	No	No	No
149	240479	I-680 Auxiliary Lanes (McKee Road to Berryessa Road)	Santa Clara	Road Efficiency	STRONG	MINIMAL	MINIMAL	1.0	No	No	Yes

* = serving a CoC is defined as being located within a CoC and providing an access point for residents

Map ID	Project ID	Project Name	County	Project Type	EQUITY-RELATED TARGETS			Equity Targets Score	Serves Community of Concern?*	In Community of Concern?	In CARE Community?
					Housing	PM in CARE	Low Income HH Transportation Cost				
150	240586	Oregon Expressway Alma Bridge Interchange Improvements	Santa Clara	Road Efficiency	STRONG	MINIMAL	MINIMAL	1.0	No	No	No
151	21922	Mineta San Jose International Airport APM Connector	Santa Clara	Transit Efficiency	STRONG	MINIMAL	MINIMAL	1.0	Yes	Yes	Yes
152	22814	Foothill Expressway Deceleration Lane Extension	Santa Clara	Road Efficiency	STRONG	MINIMAL	MINIMAL	1.0	No	No	No
153	230340	New Lawrence Expressway Interchange (Kifer Road)	Santa Clara	Arterial Expansion	MINIMAL	MINIMAL	MINIMAL	0.0	No	No	No
154	240580	I-280/Lawrence Expressway/Stevens Creek Interchange Improvements	Santa Clara	Arterial Expansion	MINIMAL	MINIMAL	MINIMAL	0.0	No	No	No
155	230332	Rengstorff Avenue Grade Separation	Santa Clara	Road Efficiency	MINIMAL	MINIMAL	MINIMAL	0.0	No	Yes	No
156	240404	Calaveras Boulevard Overpass Widening (Abel Street to Milpitas Boulevard)	Santa Clara	Road Efficiency	MODERATE	MINIMAL	MINIMAL	0.5	Yes	Yes	No
157	240431	SR-85 Auxiliary Lanes (El Camino Real to Winchester Boulevard)	Santa Clara	Road Efficiency	MINIMAL	MINIMAL	MINIMAL	0.0	Yes	Yes	No
158	240443	Mary Avenue Extension	Santa Clara	Road Efficiency	MINIMAL	MINIMAL	MINIMAL	0.0	Yes	Yes	No
159	HOTd	Silicon Valley Express Lanes Network	Santa Clara	Express Lanes Network	MODERATE	MODERATE AD	MINIMAL	0.0	Yes	Yes	Yes
160	230294	New SR-152 Alignment	Santa Clara	Highway Expansion	MODERATE	MINIMAL	MINIMAL	0.5	No	No	No
161	21714	US-101 Widening (Monterey Street to SR-129)	Santa Clara	Road Efficiency	MODERATE	MINIMAL	MINIMAL	0.5	No	No	No
162	21341	Fairfield/Vacaville Capitol Corridor Station (Phases 1, 2, and 3)	Solano	Transit Efficiency	MODERATE	MINIMAL	MINIMAL	0.5	No	No	No
163	22629	Vallejo Ferry Terminal Intermodal Station	Solano	Transit Expansion	MODERATE	MINIMAL	MINIMAL	0.5	Yes	Yes	No
164	94151	Jepson Parkway Construction (SR-12 to I-80)	Solano	Highway Expansion	MINIMAL	MINIMAL	MINIMAL	0.0	No	No	No
165	230325	I-80 Westbound Cordelia Truck Scales Relocation	Solano	Road Efficiency	MINIMAL	MINIMAL	MINIMAL	0.0	No	No	No
166	230326	I-80/I-680/SR-12 Widening & Interchange Improvements (Phase 1)	Solano	Highway Expansion	MODERATE AD	MINIMAL	MINIMAL	-0.5	No	No	No
167	230468	I-80 Auxiliary Lanes (Airbase Parkway to I-680)	Solano	Highway Expansion	MINIMAL	MINIMAL	MINIMAL	0.0	No	Yes	No
168	230561	SR-113 Relocation out of Dixon	Solano	Highway Expansion	MINIMAL	MINIMAL	MINIMAL	0.0	No	No	No
169	230575	Rio Vista Bridge Reconstruction & Realignment	Solano	Road Efficiency	MINIMAL	MINIMAL	MINIMAL	0.0	No	No	No
170	22794	Curtola Transit Center Improvements	Solano	Transit Efficiency	MODERATE	MINIMAL	MINIMAL	0.5	Yes	Yes	No
171	230313	Redwood Parkway & Fairground Drive Roadway Improvements	Solano	Road Efficiency	MODERATE	MINIMAL	MINIMAL	0.5	Yes	Yes	No
172	230477	SR-12 Widening (SR-29 to Sacramento County line)	Solano	Highway Expansion	MINIMAL	MINIMAL	MINIMAL	0.0	No	No	No
173	240650	Sonoma Countywide Bus Service Frequency Improvements	Sonoma	Transit Efficiency	MODERATE	MINIMAL	STRONG	1.5	Yes	Yes	No
174	230366	Caulfield Lane Extension (Southern Crossing)	Sonoma	Road Efficiency	STRONG	MINIMAL	MINIMAL	1.0	No	No	No
175	21998	SR-116 Widening & Rehabilitation (Elphick Road to Redwood Drive)	Sonoma	Highway Expansion	MINIMAL	MINIMAL	MINIMAL	0.0	No	No	No
176	21884	Petaluma Cross-Town Connector/Interchange	Sonoma	Road Efficiency	STRONG	MINIMAL	MINIMAL	1.0	No	No	No
177	22207	Farmers Lane Extension (Bellevue Avenue to SR-12)	Sonoma	Highway Expansion	MODERATE	MINIMAL	MINIMAL	0.5	Yes	Yes	No

LEGEND

IMPACT TO TARGETS

STRONG

MODERATE

MINIMAL

MODERATE ADVERSE

STRONG ADVERSE

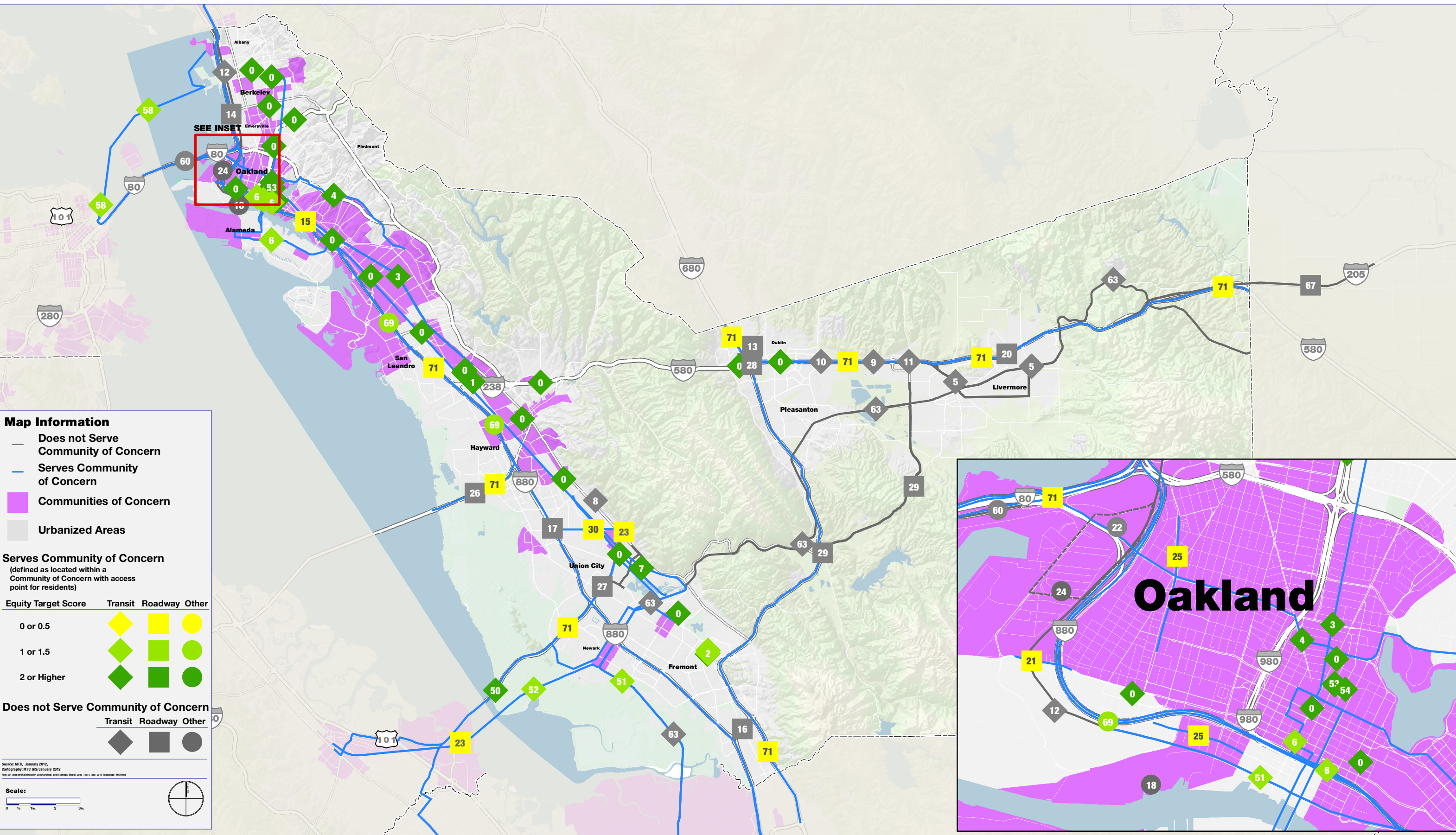
* = serving a CoC is defined as being located within a CoC and providing an access point for residents

Plan Bay Area: Equity Considerations Map

Alameda County

Research and Demographic Unit

Geographic Information Systems Unit



Source: MTC, January 2012.
Cartography: MTC GIS/January 2012

Scale:

0 1/4 1/2 1 2 3 miles



Plan Bay Area: Equity Considerations Map Alameda County



Metropolitan Transportation Commission
Planning, Financing and Coordinating
Transportation for the nine-county
San Francisco Bay Area

Research and Demographic Unit

Geographic Information Systems Unit

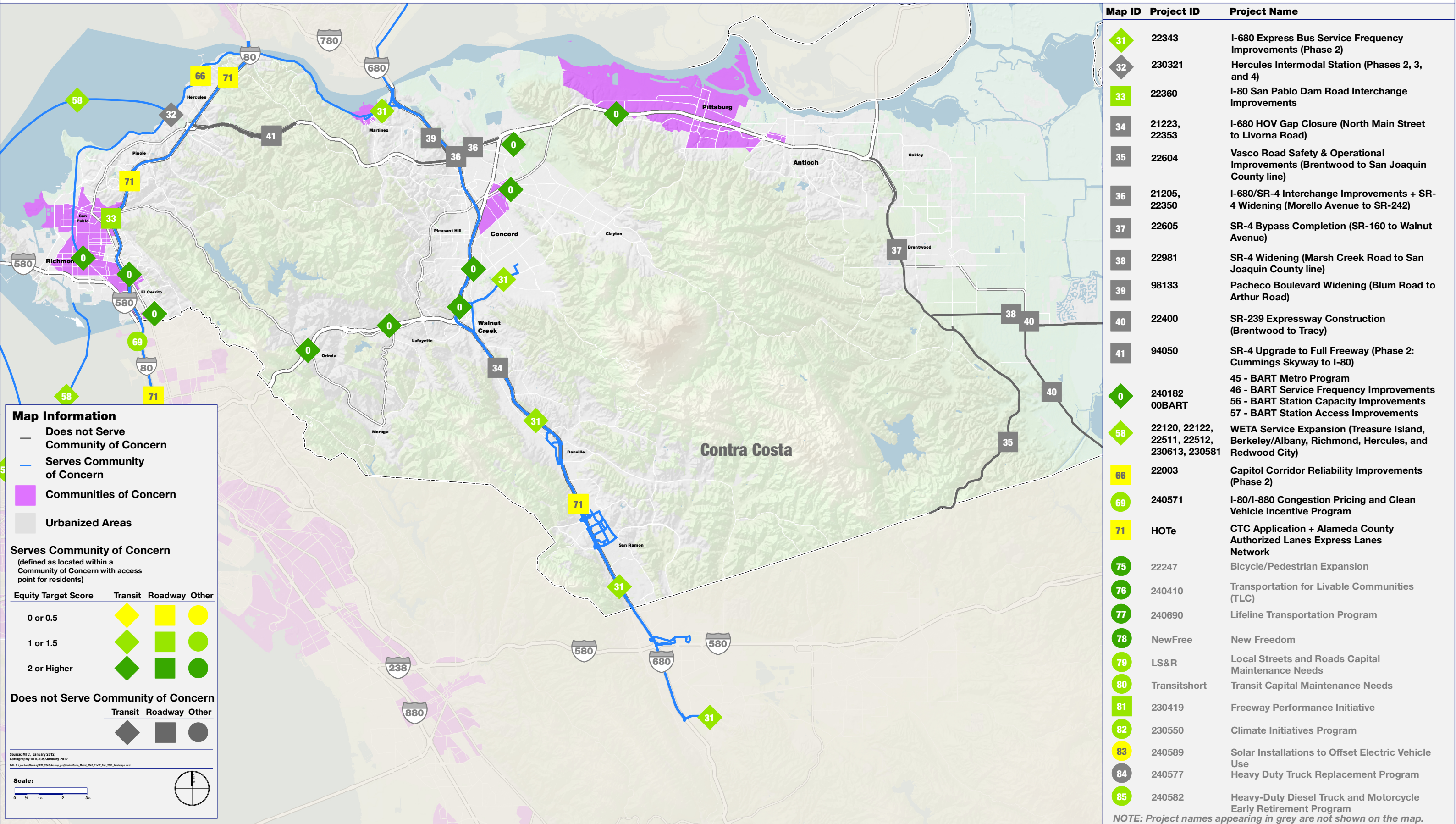
Map ID	Project ID	Project Name	Map ID	Project ID	Project Name
	240180	BART Bay Fair Connection		94506	Fremont/Union City East-West Connector
	22062	Irvington BART Station		230099	I-580/I-680 Interchange Improvements (Phase 1)
	22455	AC Transit East Bay BRT		240062, 22776	SR-84/I-680 Interchange Improvements + SR-84 Widening (Pigeon Pass to I-680)
	22780	AC Transit Grand-MacArthur BRT		240053	Whipple Road Widening (Mission Boulevard to I-880)
	22667	BART to Livermore (Phases 1 & 2: Rail Extension) Alameda-Oakland BRT + Transit Access Improvements I-880 Broadway/Jackson Interchange		240182, 00BART	45 - BART Metro Program 46 - BART Service Frequency Improvements 56 - BART Station Capacity Improvements 57 - BART Station Access Improvements
	230101	Union City Commuter Rail Station + Dumbarton Rail Segment G Improvements		240018	Dumbarton Corridor Express Bus
	240113	BART Hayward Maintenance Complex		22009	Capitol Corridor Service Frequency Improvements (Oakland to San Jose)
	240196	BART to Livermore (Phase 1: 1-Station Rail Extension with Bus Enhancements)		240216	Dumbarton Rail
	LBART	BART to Livermore (Phase 1: 1-Station Rail Extension with DMU)		240699	AC Transit Service Frequency Improvements (Restoration of 2009 Funding Levels)
	580_BUS	I-580 Express Bus (Dublin to Livermore)		00ACT1	AC Transit Frequent Transit Network
	22089	Martinez Subdivision & Rail Improvements		22120, 22122, 22511, 22512, 230613, 230581	WETA Service Expansion (Treasure Island, Berkeley/Albany, Richmond, Hercules, and Redwood City)
	22765	I-580/I-680 Interchange HOV Direct Connectors		230604	Bay Bridge Contraflow Lane
	240318	I-80 Ashby Interchange Improvements		98139	ACE Expansion
	22769	I-880 23rd/29th Interchange Improvements		22657	I-580 Westbound Truck Climbing Lane (Altamont Pass)
	22779	I-880/SR-262 Interchange Improvements (Phase 2: Warren Avenue Grade Separation)		240571	I-80/I-880 Congestion Pricing and Clean Vehicle Incentive Program
	240052	I-880 Whipple Road Interchange Improvements		HOTe	CTC Application + Alameda County Authorized Lanes Express Lanes Network
	240317	Port of Oakland Wharf Replacement & Berth Deepening (Berths 60-63)		22247	Bicycle/Pedestrian Expansion
	240657	I-580 Corridor Spot Intersection Improvements		240410	Transportation for Livable Communities (TLC)
	21100	I-580 Vasco Road Interchange Improvements & Auxiliary Lanes		240690	Lifeline Transportation Program
	22082	Port of Oakland 7th Street Grade Separation & Roadway Improvements		NewFree	New Freedom
	22760	Port of Oakland Outer Harbor Intermodal Terminals		LS&R	Local Streets and Roads Capital Maintenance Needs
	230103	Decoto Neighborhood Grade Separation		Transitshort	Transit Capital Maintenance Needs
	240024	Oakland Army Base Infrastructure Improvements		230419	Freeway Performance Initiative
	240279	Mandela Parkway & 3rd Street Corridor Street Reconstruction		230550	Climate Initiatives Program
	240562	SR-92 Clawiter/Whitesell Interchange Improvements		240589	Solar Installations to Offset Electric Vehicle Use
				240577	Heavy Duty Truck Replacement Program
				240582	Heavy-Duty Diesel Truck and Motorcycle Early Retirement Program

NOTE: Project names appearing in grey are not shown on the map.

FIGURE D-3

Research and Demographic Unit

Geographic Information Systems Unit



Plan Bay Area: Equity Considerations Map

Marin County

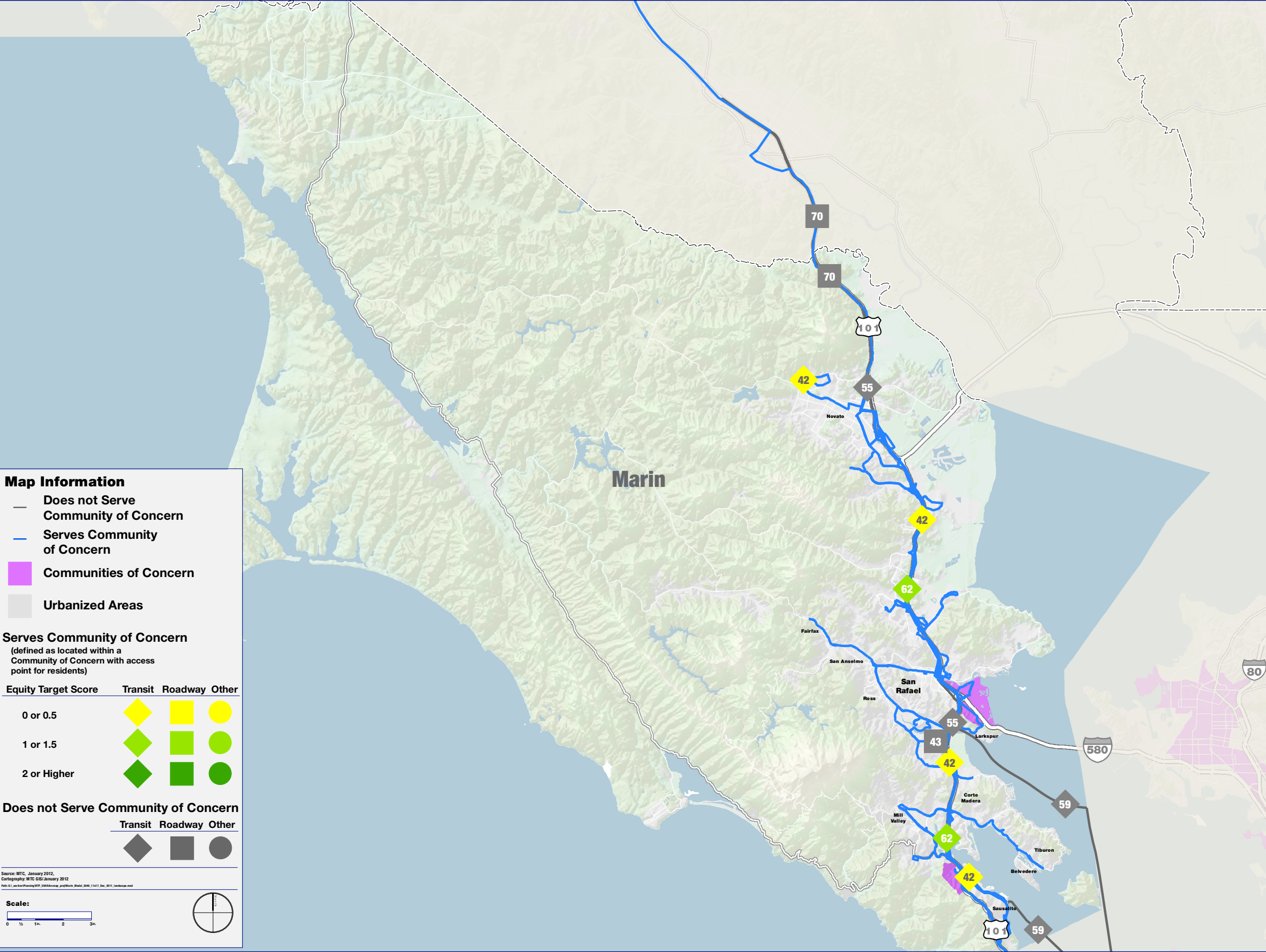
FIGURE D-4



Metropolitan Transportation Commission
Planning, Financing and Coordinating
Transportation for the nine-county
San Francisco Bay Area

Research and Demographic Unit

Geographic Information Systems Unit



Map ID	Project ID	Project Name
42	230252	Marin Countywide Bus Service Frequency
43	21325	US-101 Twin Cities Corridor Improvements
44	240644	Marin Countywide Senior Mobility Program
55	240675, 240676, 240677	SMART (Phase 2: Extensions to Cloverdale & Larkspur + IOS Cost Deferrals)
59	230055	Golden Gate Ferry Service Frequency Improvements
62	230219, 230314	Golden Gate Bus Service Frequency Improvements
70	98147, 240691	Marin-Sonoma Narrows (Phase 2: HOV Lanes)
75	22247	Bicycle/Pedestrian Expansion
76	240410	Transportation for Livable Communities (TLC)
77	240690	Lifeline Transportation Program
78	NewFree	New Freedom
79	LS&R	Local Streets and Roads Capital
80	Transitshort	Transit Capital Maintenance Needs
81	230419	Freeway Performance Initiative
82	230550	Climate Initiatives Program
83	240589	Solar Installations to Offset Electric Vehicle Use
84	240577	Heavy Duty Truck Replacement Program
85	240582	Heavy-Duty Diesel Truck and Motorcycle Early Retirement Program

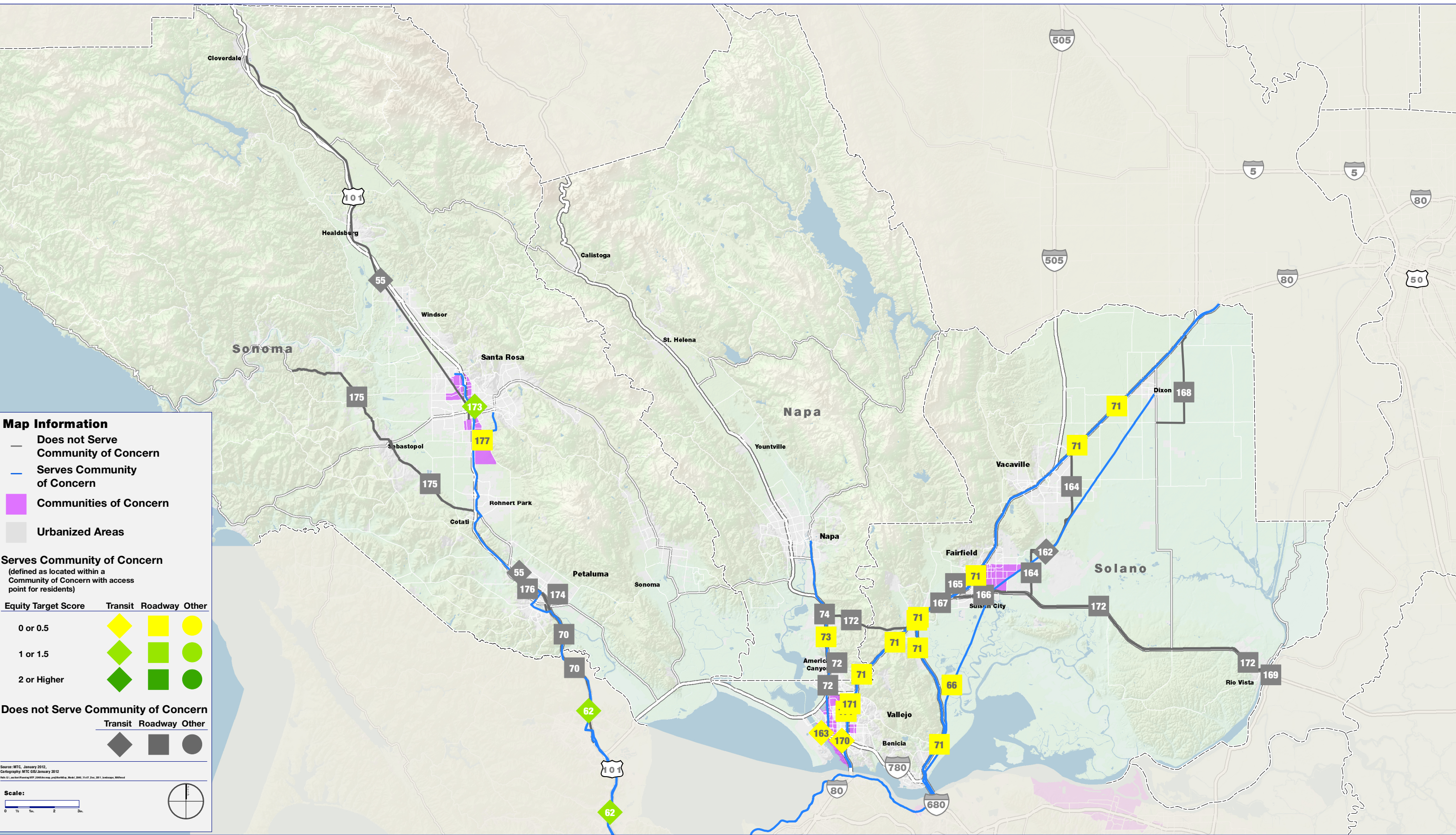
NOTE: Project names appearing in grey are not shown on the map.

Plan Bay Area: Equity Considerations Map

North Bay Counties

Research and Demographic Unit

Geographic Information Systems Unit



Plan Bay Area: Equity Considerations Map

North Bay Counties



Metropolitan Transportation Commission
Planning, Financing and Coordinating
Transportation for the nine-county
San Francisco Bay Area

Research and Demographic Unit

Geographic Information Systems Unit

Map ID	Project ID	Project Name	Map ID	Project ID	Project Name
55	240675, 240676, 240677	SMART (Phase 2: Extensions to Cloverdale & Larkspur + IOS Cost Deferrals)	170	22794	Curtola Transit Center Improvements
62	230219, 230314	Golden Gate Bus Service Frequency Improvements	171	230313	Redwood Parkway & Fairground Drive Roadway Improvements
66	22003	Capitol Corridor Reliability Improvements (Phase 2)	172	230477	SR-12 Widening (SR-29 to Sacramento County line)
70	98147, 240691	Marin-Sonoma Narrows (Phase 2: HOV Lanes)	173	240650	Sonoma Countywide Bus Service Frequency
71	HOTe	CTC Application + Alameda County Authorized Lanes Express Lanes	174	230366	Caulfield Lane Extension (Southern Crossing)
72	240122	SR-29 Complete Streets Improvements	175	21998	SR-116 Widening & Rehabilitation (Elphick Road to Redwood Drive)
73	240617	SR-29 HOV Lanes & BRT (Napa Junction to Vallejo)	176	21884	Petaluma Cross-Town Connector/Interchange
74	94075	SR-12 Jameson Canyon Project (Phase 3: New SR-12/SR-29 Interchange)	177	22207	Farmers Lane Extension (Bellevue Avenue to SR-12)
75	22247	Bicycle/Pedestrian Expansion			
76	240410	Transportation for Livable Communities (TLC)			
77	240690	Lifeline Transportation Program			
78	NewFree	New Freedom			
79	LS&R	Local Streets and Roads Capital			
80	Transitshort	Transit Capital Maintenance Needs			
81	230419	Freeway Performance Initiative			
82	230550	Climate Initiatives Program			
83	240589	Solar Installations to Offset Electric Vehicle Use			
84	240577	Heavy Duty Truck Replacement Program			
85	240582	Heavy-Duty Diesel Truck and Motorcycle Early Retirement Program			
162	21341	Fairfield/Vacaville Capitol Corridor Station (Phases 1, 2, and 3)			
163	22629	Vallejo Ferry Terminal Intermodal Station			
164	94151	Jepson Parkway Construction (SR-12 to I-80)			
165	230325	I-80 Westbound Cordelia Truck Scales Relocation			
166	230326	I-80/I-680/SR-12 Widening & Interchange Improvements (Phase 1)			
167	230468	I-80 Auxiliary Lanes (Airbase Parkway to I-680)			
168	230561	SR-113 Relocation out of Dixon			
169	230575	Rio Vista Bridge Reconstruction & Realignment			

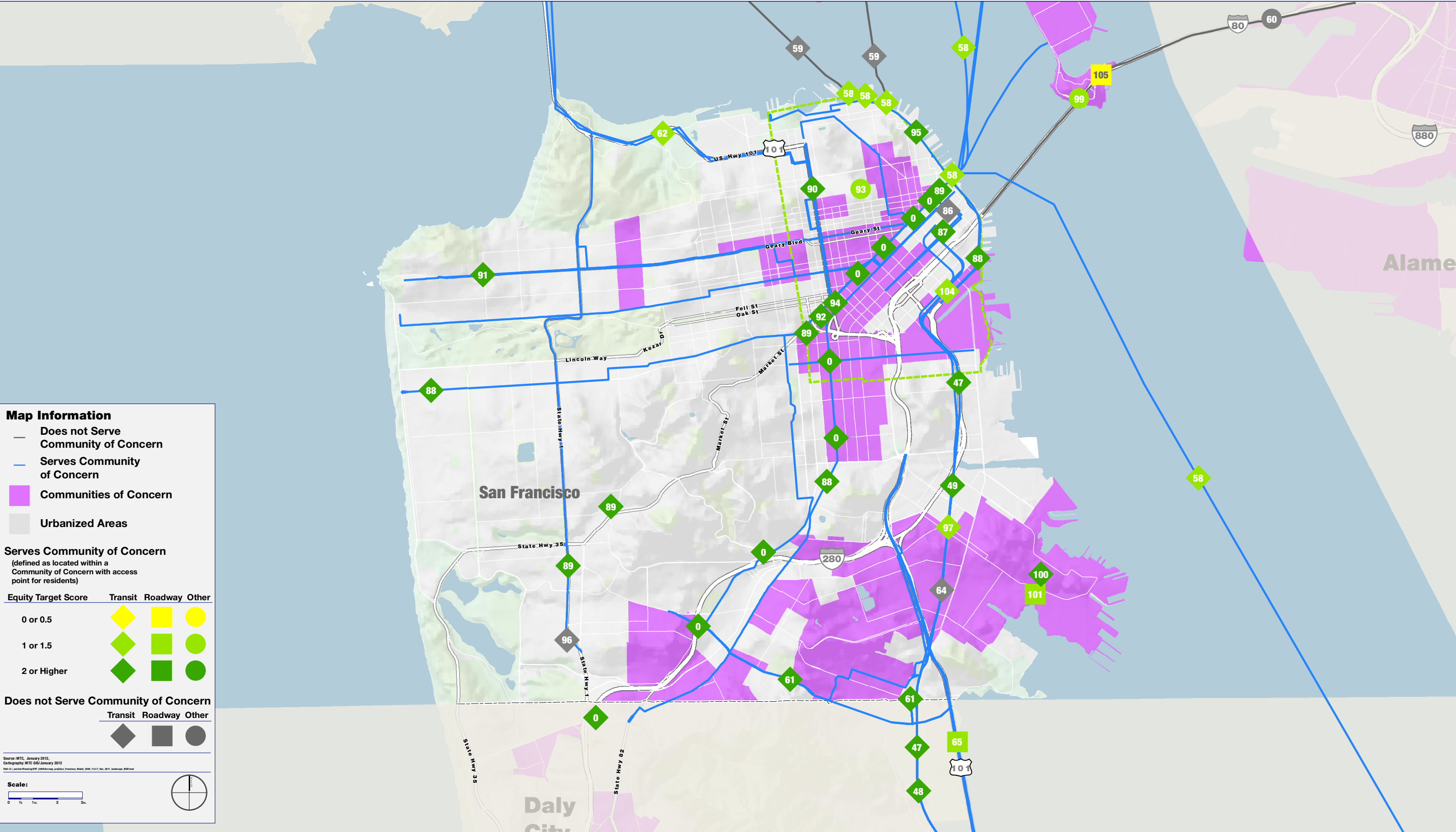
NOTE: Project names appearing in grey are not shown on the map.

Plan Bay Area: Equity Considerations Map

San Francisco

Research and Demographic Unit

Geographic Information Systems Unit



Plan Bay Area: Equity Considerations Map San Francisco



Metropolitan Transportation Commission
Planning, Financing and Coordinating
Transportation for the nine-county
San Francisco Bay Area

Research and Demographic Unit

Geographic Information Systems Unit

Map ID	Project ID	Project Name	Map ID	Project ID	Project Name
	240182 00BART	45 - BART Metro Program 46 - BART Service Frequency Improvements 56 - BART Station Capacity Improvements 57 - BART Station Access Improvements		230164	Geary Boulevard BRT
	230603	California High-Speed Train - Bay Area to Central Valley		240155	Better Market Street
	240134, 21627	Caltrain Service Frequency Improvements (6-Train Service during Peak Hours) + Electrification (SF to Tamien)		240522	Congestion Pricing Pilot
	21627, 240134, 240521	Caltrain Vision (10-Train Service during Peak Hours) + Electrification (San Francisco to Tamien)		00MUNI	Muni Service Frequency Improvements
	22120, 22122, 22511, 22512, 230613, 230581	WETA Service Expansion (Treasure Island, Berkeley/Albany, Richmond, Hercules, and Redwood City)		22415	Historic Streetcar Expansion Program
	230055	Golden Gate Ferry Service Frequency Improvements		240545	Parkmerced Light Rail Corridor
	230604	Bay Bridge Contraflow Lane		240557	Oakdale Caltrain Station
	22227, 240328, 240334	Geneva Avenue Corridor Improvements (Roadway Extension, BRT, and Southern Intermodal Terminal)		240158	Eastern Neighborhoods (EN TRIPS) Circulation & Streetscape Improvements
	230219, 230314	Golden Gate Bus Service Frequency Improvements		240694	Treasure Island Congestion Pricing
	240036	Caltrain Communications-Based Overlay Signal System (CBOSS) and Positive Train Control System (PTC)		240147	Southeast Waterfront Transportation Improvements
	240060, 240523	US-101 Express Lanes (Whipple Avenue to Cesar Chavez Street)		240163	Hunters Point & Candlestick Point Local Road Network
	22247	Bicycle/Pedestrian Expansion		240344	SFpark
	240410	Transportation for Livable Communities (TLC)		240358	Mission Bay Local Road Network
	NewFree	New Freedom		240035	Caltrain Terminal Station Improvements (4th & King)
	230161	Van Ness Avenue BRT		230555	I-80 Yerba Buena Island Interchange Improvements
	LS&R	Local Streets and Roads Capital Maintenance Needs			
	Transitshort	Transit Capital Maintenance Needs			
	230419	Freeway Performance Initiative			
	230550	Climate Initiatives Program			
	240589	Solar Installations to Offset Electric Vehicle Use			
	240577	Heavy Duty Truck Replacement Program			
	240582	Heavy-Duty Diesel Truck and Motorcycle Early Retirement Program			
	240674	Transbay Transit Center - Phase 3 (Pedestrian Connector Tunnel to BART/Muni)			
	240674	Transbay Transit Center - Phase 2B (Caltrain Downtown Extension)			
	240171	SFMTA Transit Effectiveness Project			
	240526	SFCTA Transit Performance Initiative			
	230161	Van Ness Avenue BRT			

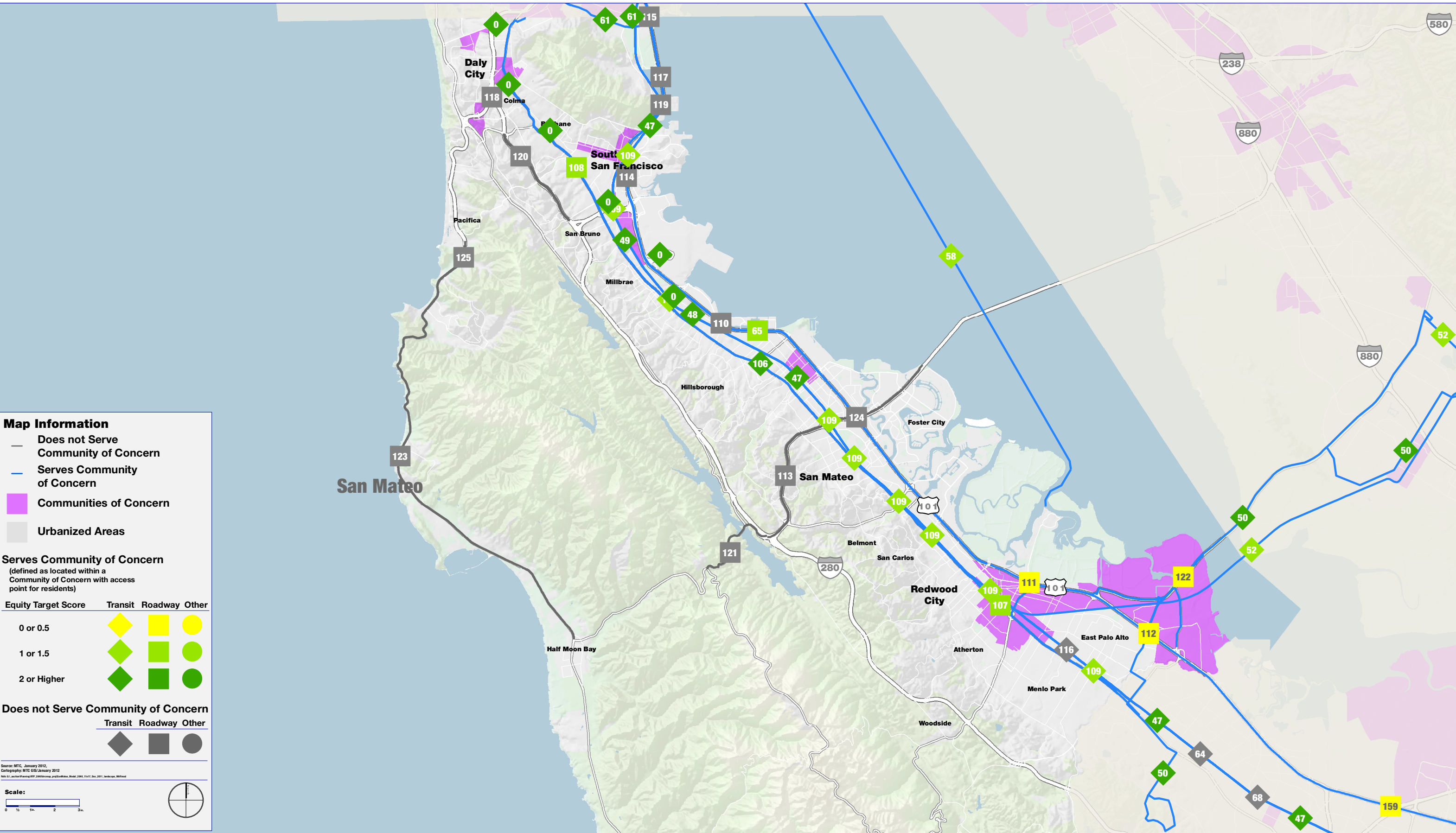
NOTE: Project names appearing in grey are not shown on the map.

Plan Bay Area: Equity Considerations Map

San Mateo

Research and Demographic Unit

Geographic Information Systems Unit



Plan Bay Area: Equity Considerations Map San Mateo



Metropolitan Transportation Commission

Planning, Financing and Coordinating

Transportation for the nine-county

San Francisco Bay Area

Research and Demographic Unit

Geographic Information Systems Unit

Map ID	Project ID	Project Name	Map ID	Project ID	Project Name
	240182 00BART	45 - BART Metro Program 46 - BART Service Freq. Improvements 56 - BART Station Capacity Improvements 57 - BART Station Access Improvements		21603	US-101 Woodside Road Interchange Improvements
	230603	California High-Speed Train - Bay Area to Central Valley		21606	US-101 Willow Road Interchange Improvements
	240134, 21627	Caltrain Service Frequency Improvements (6-Train Service during Peak Hours) + Electrification (SF to Tamien)		21613	SR-92 Improvements (Phase 1: San Mateo Bridge to I-280)
	21627, 240134, 240521	Caltrain Vision (10-Train Service during Peak Hours) + Electrification (San Francisco to Tamien)		22279	US-101 Produce Road Interchange Improvements
	240018	Dumbarton Corridor Express Bus		22756	US-101 Candlestick Point Interchange Improvements
	240216	Dumbarton Rail		240064	Caltrain Grade Separations (Phase 1: San Mateo County)
	22120, 22122, 22511, 22512, 230613, 230581	WETA Service Expansion (Treasure Island, Berkeley/Albany, Richmond, Hercules, and Redwood City)		21604	US-101 Auxiliary Lane Modifications (Oyster Point to San Francisco County line)
	22227, 240328, 240334	Geneva Avenue Corridor Improvements (Roadway Extension, BRT, and Southern Intermodal Terminal)		21615	I-280/SR-1 Interchange Improvements
	240036	Caltrain Communications-Based Overlay Signal System (CBOSS) and Positive Train Control System (PTC)		22229	US-101 Sierra Point Parkway Interchange Improvements + Lagoon Way Extension
	240060, 240523	US-101 HOV Lanes (Whipple Avenue to Cesar Chavez Street)		22230	I-280 Auxiliary Lanes (Hickey Boulevard to I-380)
	240140	Caltrain At-Grade Crossing Improvements		94644	SR-92 Westbound Slow-Vehicle Climbing Lane (I-280 to SR-35)
	22247	Bicycle/Pedestrian Expansion		21612	Dumbarton Bridge/US-101 Access Improvements (Phase 1)
	240410	Transportation for Livable Communities (TLC)		240114	SR-1 Safety & Operational Improvements (Pacifica to Half Moon Bay)
	240690	Lifeline Transportation Program		22282	US-101 Operational Improvements (near US-101/SR-92 Interchange)
	NewFree	New Freedom		98204	SR-1 Widening (Fassler Avenue to Westport Drive)
	LS&R	Local Streets and Roads Capital		HOTd	Silicon Valley Express Lanes Network
	Transitshort	Transit Capital Maintenance Needs			
	230419	Freeway Performance Initiative			
	230550	Climate Initiatives Program			
	240589	Solar Installations to Offset Electric Vehicle Use			
	240577	Heavy Duty Truck Replacement Program			
	240582	Heavy-Duty Diesel Truck and Motorcycle Early Retirement Program			
	240026	SamTrans El Camino BRT			
	22274	ITS Improvements in San Mateo County			
	240590	El Camino Real Complete Streets Improvements			
	22268	San Mateo Countywide Shuttle Service Frequency Improvements			
	21602	US-101 Broadway Interchange Improvements			

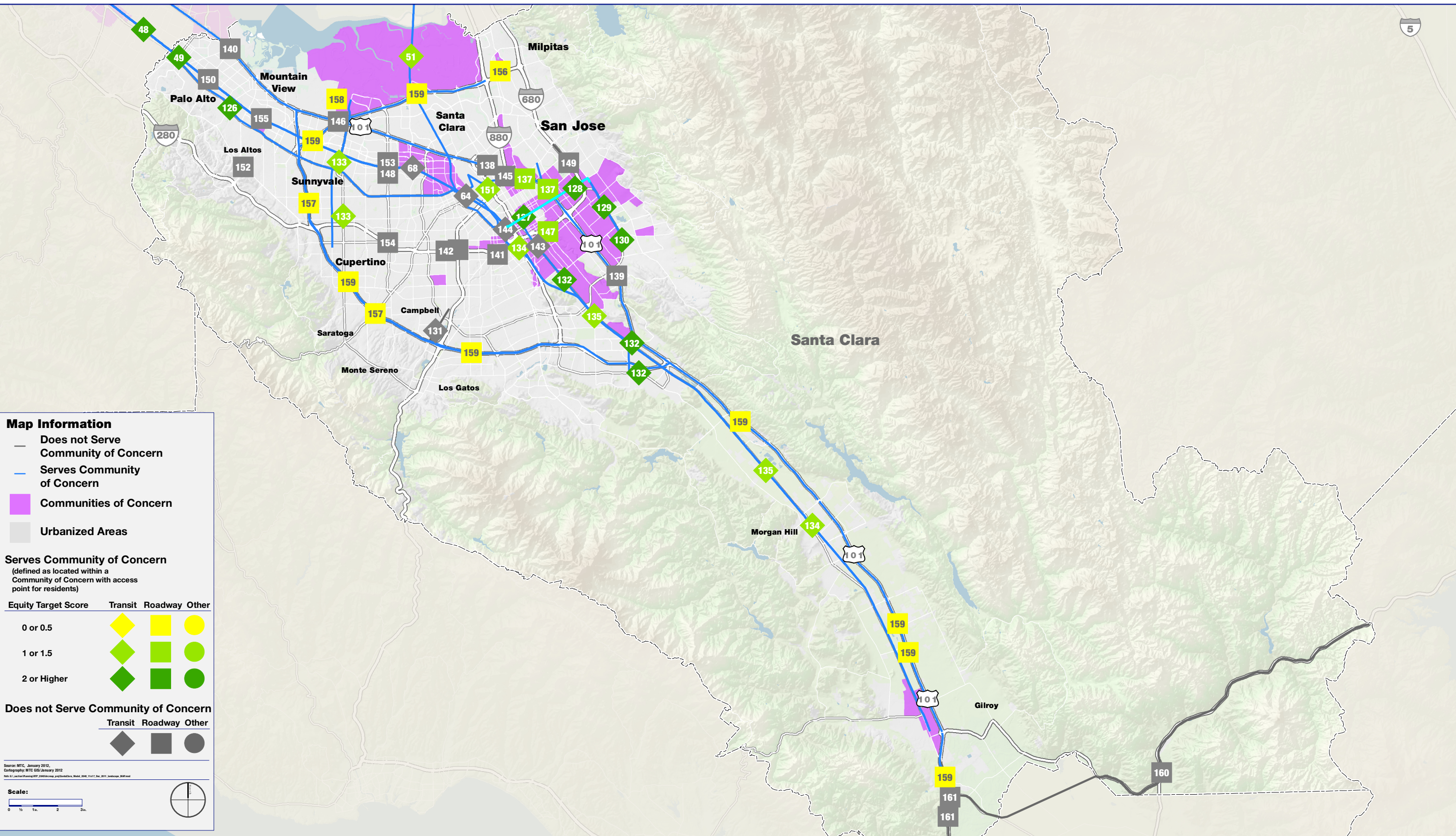
NOTE: Project names appearing in grey are not shown on the map.

Plan Bay Area: Equity Considerations Map

Santa Clara County

Research and Demographic Unit

Geographic Information Systems Unit



Plan Bay Area: Equity Considerations Map Santa Clara County



Metropolitan Transportation Commission
Planning, Financing and Coordinating
Transportation for the nine-county
San Francisco Bay Area

Research and Demographic Unit

Geographic Information Systems Unit

Map ID	Project ID	Project Name	Map ID	Project ID	Project Name
48	240134, 21627	Caltrain Service Frequency Improvements (6-Train Service during Peak Hours) + Electrification (SF to Tamien)	136	240494	ITS Improvements in Santa Clara County
49	240134, 240521, 21627	Caltrain Vision (10-Train Service during Peak Hours) + Electrification (San Francisco to Tamien)	137	22965	New US-101 Mabury/Taylor Interchange
51	22009	Capitol Corridor Service Frequency Improvements (Oakland to San Jose)	138	22979	New US-101 Zanker/Skyport/Fourth Street
64	240036	Caltrain Communications-Based Overlay Signal System (CBOSS) and Positive Train Control System (PTC)	139	240437	US-101 Braided Ramps (Capitol Expressway to Yerba Buena Road)
68	240140	Caltrain At-Grade Crossing Improvements	140	240441	US-101/Oregon Expressway/Embarcadero Road Interchange Improvements
75	22247	Bicycle/Pedestrian Expansion	141	21719	I-880/I-280/Stevens Creek Boulevard Interchange Improvements
76	240410	Transportation for Livable Communities (TLC)	142	230537	I-280 Winchester Boulevard Interchange Improvements
77	240690	Lifeline Transportation Program	143	240048	Caltrain Diridon Station Track Capacity Expansion (Phases 2 & 3)
78	NewFree	New Freedom	144	240063	Caltrain Terminal Station Improvements
79	LS&R	Local Streets and Roads Capital Maintenance Needs	145	240429	I-880/US-101 Interchange Improvements
80	Transitshort	Transit Capital Maintenance Needs	146	240444	US-101/SR-237 Interchange Improvements
81	230419	Freeway Performance Initiative	147	240671	New I-280 Senter Road Interchange
82	230550	Climate Initiatives Program	148	230337	New Lawrence Expressway Interchange (Monroe Street)
83	240589	Solar Installations to Offset Electric Vehicle	149	240479	I-680 Auxiliary Lanes (McKee Road to Berryessa Road)
84	240577	Heavy Duty Truck Replacement Program	150	240586	Oregon Expressway Alma Bridge Interchange Improvements
85	240582	Heavy-Duty Diesel Truck and Motorcycle Early Retirement Program	151	21922	Mineta San Jose International Airport APM Connector
126	240119	VTA El Camino BRT	152	22814	Foothill Expressway Deceleration Lane Extension
127	240375	BART to San Jose/Santa Clara (Phase 2: Berryessa to Santa Clara)	153	230340	New Lawrence Expressway Interchange (Kifer Road)
128	22019	Downtown East Valley (Phase 2: LRT)	154	240580	I-280/Lawrence Expressway/Stevens Creek Interchange Improvements
129	22956	Capitol Expressway Light Rail Extension (Phase 2: to Eastridge Transit Center)	155	230332	Rengstorff Avenue Grade Separation
130	22978	Capitol Expressway Light Rail Extension (Phases 2 & 3: to Nieman)	156	240404	Calaveras Boulevard Overpass Widening (Abel Street to Milpitas Boulevard)
131	98119	Vasona Light Rail Extension (Phase 2)	157	240431	SR-85 Auxiliary Lanes (El Camino Real to Winchester Boulevard)
132	230547	Monterey Highway BRT	158	240443	Mary Avenue Extension
133	230554	Sunnyvale-Cupertino BRT	159	HOTd	Silicon Valley Express Lanes Network
134	21760	Caltrain Double-Track Improvements (San Jose to Gilroy)	160	230294	New SR-152 Alignment
135	230534	Caltrain Electrification (Tamien to Gilroy)	161	21714	US-101 Widening (Monterey Street to SR-129)

NOTE: Project names appearing in grey are not shown on the map.