

PLAN BAY AREA 2050

PLAN BAY AREA 2050

TELL US WHAT YOU THINK.

Plan Bay Area 2050: A Discussion of Equity

Metropolitan Transportation Commission (MTC) &
Association of Bay Area Governments (ABAG)

September 2021



I LIKE IT!

#3
reduces
traffic
& healthy
people

#5
esp. impact
on persons
w/ disabilities

#7
esp close
to Hays
& public
transit

#3
fresh air
good for
environment

#14
small
business
need encour
to grow

#5
Need
housing that is
affordable to
middle-income
families

#7
fits with trend
of declining
inlet and motor

#1
Publicly owned
sites for public
use (e.g. transit
stations, etc.) is
important. It
is difficult to find
land for public use.

#2
qualified
people to
work in the
area. Need to
attract and
retain talent.

#10
New tax breaks
for housing
growth. Subsidize
Sustainable
communities

#6
Top priority
is to get the
transit system
working better
and faster.

#1
Road
improvements
are a high
priority. Need
to get the
transit system
working better
and faster.

#6
Specific need
for housing
for unhoused
residents

#12
subsidies
that come in
the form of tax
breaks may not
help families
that are struggling today

#3
need to
require
scooters
traffic law
be licensed for
safety



NOT LIKING IT.

Don't like
top-down
planning.

Need more
on-going public
housing for
transit

Today's Goals

Look back at how equity was incorporated into Horizon / Plan Bay Area 2050

Hear from you how we can continue to evolve our equity work in the future

Quick Poll

Which county do you live in?

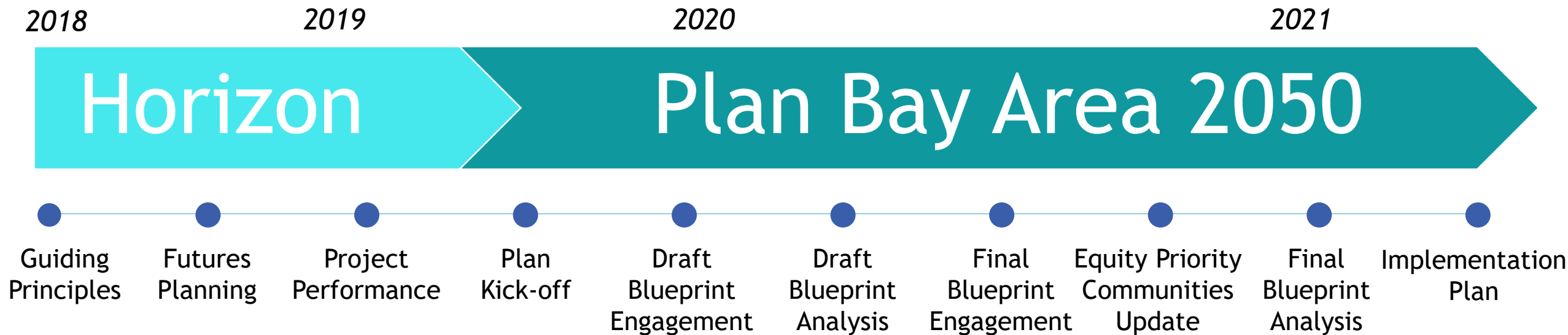
What type of organization do you work for?

How are you feeling about today's goals?

Agenda

- [20 mins] Horizon / Plan Bay Area 2050 Journey: Equity Focus**
- [5 mins] Known Limitations**
- [30 mins] Open Discussion**
- [5 mins] Close-Out and Survey**

Almost four years of planning...



Guiding Principles

Futures Planning

Project Performance

Plan Bay Area Kick-off

Draft Blueprint Engagement

Draft Blueprint Analysis

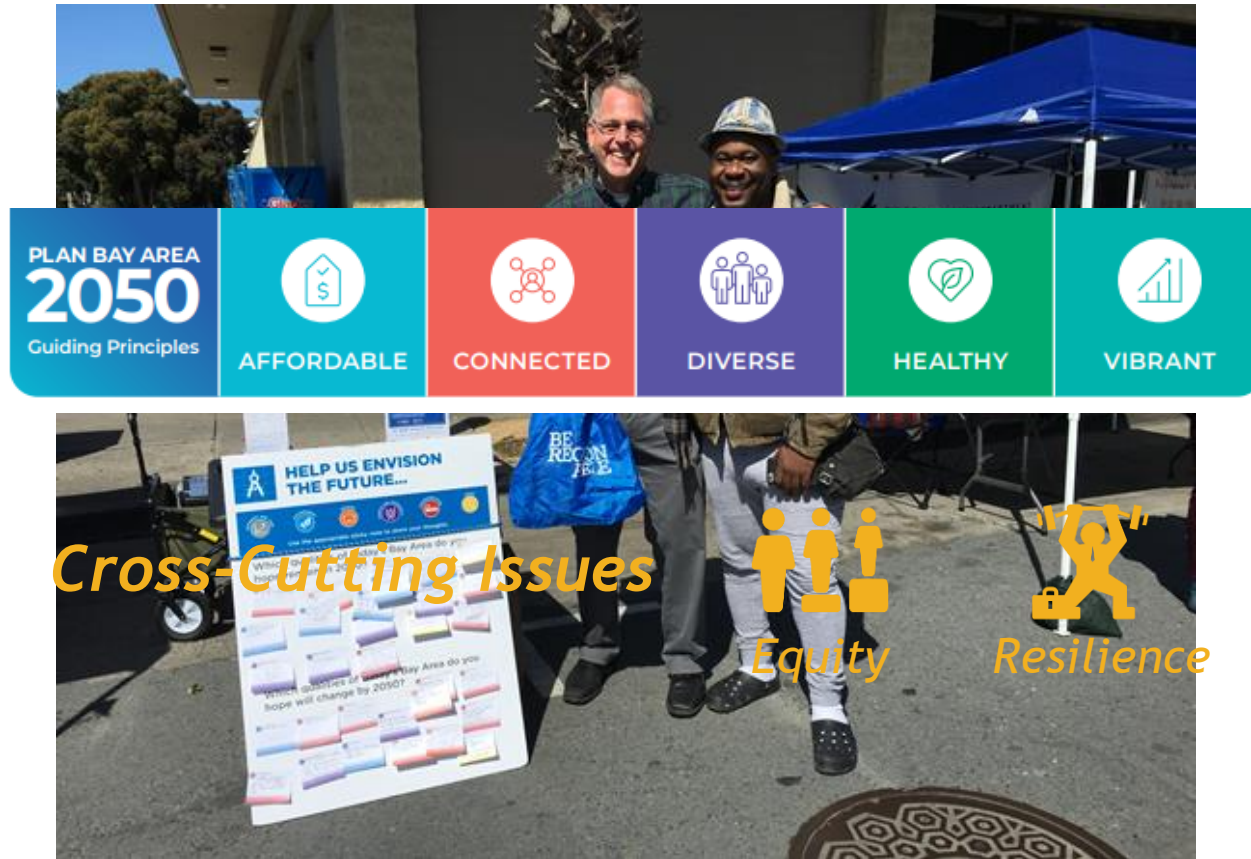
Final Blueprint Engagement

Equity Priority Communities Update

Final Blueprint Analysis

Implementation Plan

Developing Guiding Principles for the Planning Process



Engaged early with communities to “Envision the Future” by meeting them where they are, with a focus in Equity Priority Communities

Adopted five Guiding Principles, with “Equity” and “Resilience” as cross-cutting issues

Finding Resilient + Equitable Strategies for an Uncertain Future

Analyzed 50+ strategies for equity and resilience in an uncertain future

Prioritized strategies based on small group discussions with **underrepresented persons**, facilitated by Community-Based Organizations, and pop-up workshops

Engaged with youth and stakeholders in workshops





Evaluating Transportation Projects for Resilience + Equity

Project

Guiding Principle Flags

2
2
0
0
0
0
0
2
0
2
0
0
0
1
0

Tri-Valley + San Joaquin Valley REGIONAL RAIL AUTHORITY

income and low-income riders about the low-cost multi-ride ACE fares and the benefits of riding ACE as compared to driving.

Fore Integration Commitments

A key part of the success of the ACE service is the extensive network of free shuttles at the Great America Station and the two free shuttle routes which serve the Pleasanton Station that take ACE passengers to/from their places of employment. These shuttles are also critical for the added service proposed under the Altamont Corridor Vision Phase 1 and ACE Rail Service Increase projects. SJRRRC also has an agreement with VTA to provide free transfers to the VTA light rail transit and bus services for ACE passengers. SJRRRC expects that these transfers will continue with the increase in service proposed. SJRRRC, working with SJRTD, Mountain House and SJCOG, started and contributed funding for a pilot program to run shuttles from Mountain House to the ACE Vasco station with SJRTD and is investigating other similar partnership opportunities with SJRTD and other transit providers. SJRRRC understands the importance of free or discounted transfers and is committed to working with MTC and ACTC on additional free or discounted transfers to other local bus systems in the MTC region.

SJRRRC is currently working with the State on its initiative on integrated fares— California Integrated Travel Project (Cal-ITP). SJRRRC is committed to being part of a pilot program for Cal-ITP (with the three state-supported intercity passenger rail services) and will continue to encourage other commuter rail agencies to join in on the initiative and pilot program. The Cal-ITP is expected to help with making verification for very low-income eligibility easier and cheaper.

Transit-Oriented Development and Affordable Housing

The Authority and SJRRRC commit to strongly support TOD and affordable housing around Valley Link, ACE and joint Valley Link/ACE stations. Please see the TOD commitments from the Authority and SJRRRC under “Benefit-Cost Ratio for Altamont Corridor Vision Phase 1” in this letter that also relate to the Authority’s and SJRRRC’s commitment to boosting the equity scores for the Altamont Corridor Vision Phase 1 and the ACE Rail Service Increase programs. The ACE Rail Service Increase program has all the same stations with TOD opportunities as the Altamont Corridor Vision Phase 1 with the exception of the Livermore (Isabel and Southfront), Tracy (Downtown), and River Islands stations.

Commuter Rail Rider Income Levels

The ACE rail service is a commuter rail service with very limited frequency. ACE’s normally scheduled (pre COVID-19) four daily weekday round trips are timed to operate during the peak congestion hours so that they carry the most passengers per train (routinely up to over 1200 per train), reduce the most vehicle miles traveled, and have the most benefit for the region. Commuter rail services are very different from other transit services that offer service throughout the day/week. ACE’s first train leaves Stockton at 4:20 am and arrives in San Jose at 6:32 am, its last train leaves Stockton at 7:05 am and arrives at San Jose at 9:17 am. During this peak-period in the morning, those traveling are predominately commuters. This skews the average household incomes for those who might ride ACE or

Tri-Valley + San Joaquin Valley Regional Rail Authority
1362 Rutan Court Suite 100, Livermore CA 94551

275

Back to the Future

Even
Even
Even
Even
Challenges
Even
Challenges
Challenges
Even
Challenges
Even
Challenges
Even
Even
Even

Sought “transformative” transportation project ideas from **public and non-governmental organizations**

Analyzed projects and policies with “**Equity Score**”

Sought **commitment letters** from project sponsors to advance equitable outcomes



Convening Equity Advocates for Plan Kick-Off

Key Equity Challenges Studied in Horizon



Transportation Costs
Availability of Modal Options
Distribution of Benefits from Major Infrastructure Investments



Housing Costs
Affordable Housing Preservation & Production
Displacement Risk



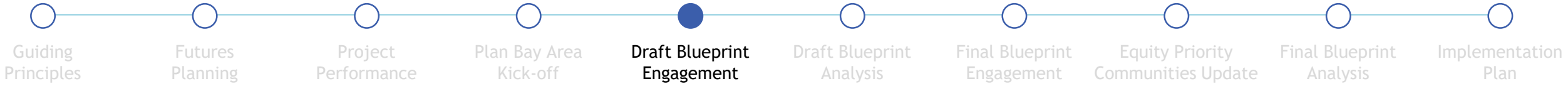
Economic Mobility (*jobs at all wage levels*)
Automation & Jobs in the Gig Economy
Jobs/Housing Imbalance



Sea Level Rise Impacts
Disaster Recovery
Building Conditions (*Energy, Water, Seismic, Fire and Accessibility*)

Introduced Horizon, Plan Bay Area 2050 and Equity Platform at first REWG meeting

Discussed regional trends, Bay Area inequities and challenges to prioritize

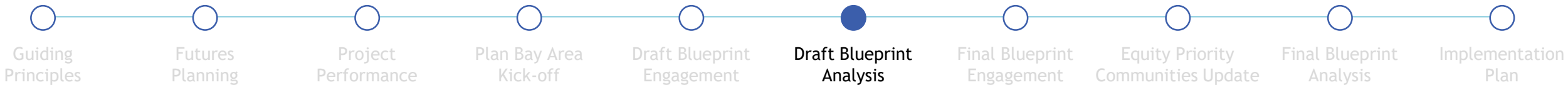


Refining Horizon Strategies to Further Advance Equity



Engaged with REWG and Policy Advisory Council to align on **desired outcomes** for measuring performance

Refined strategies during two workshops



Analyzing Outcomes to Identify Challenges

Determined equity and performance metrics toward desired outcomes

Identified outstanding challenges to be prioritized for the Final Blueprint

3 | What are the Key Equity and Performance Outcomes of the Draft Blueprint?

How does the Draft Blueprint advance or impede achievement of the Plan Vision? This section is organized by the five [Plan Bay Area 2050 Guiding Principles](#) with two key

Key Challenge #1: Affordable Guiding Principle

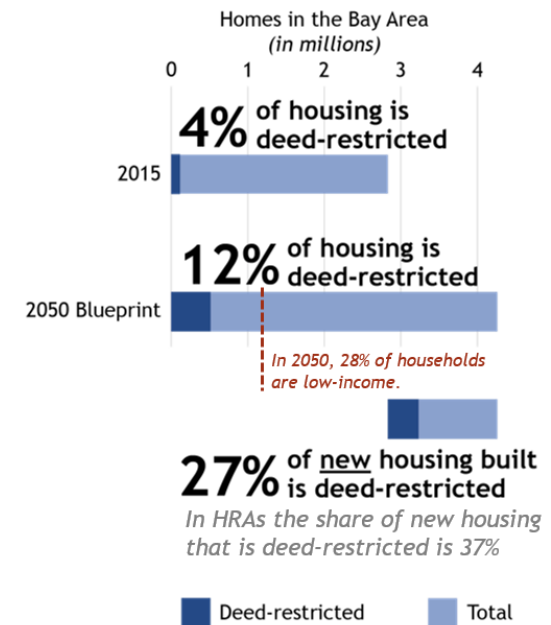


And yet...

There are still **hundreds of thousands of low-income households** without access to permanently-affordable homes.

Here's the challenge:

How do we create more permanently-affordable housing, especially in areas with high-quality schools, amenities and transportation options?



RESOURCE AREAS DUE TO STRATEGIC INVESTMENTS IN THESE LOCATIONS.



The Draft Blueprint's affordable housing preservation strategy ensures that all existing deed-restricted affordable units at risk of conversion to market-rate units are converted to permanently affordable (deed-restricted) homes.

SHARE OF AT-RISK AFFORDABLE HOUSING PRESERVED

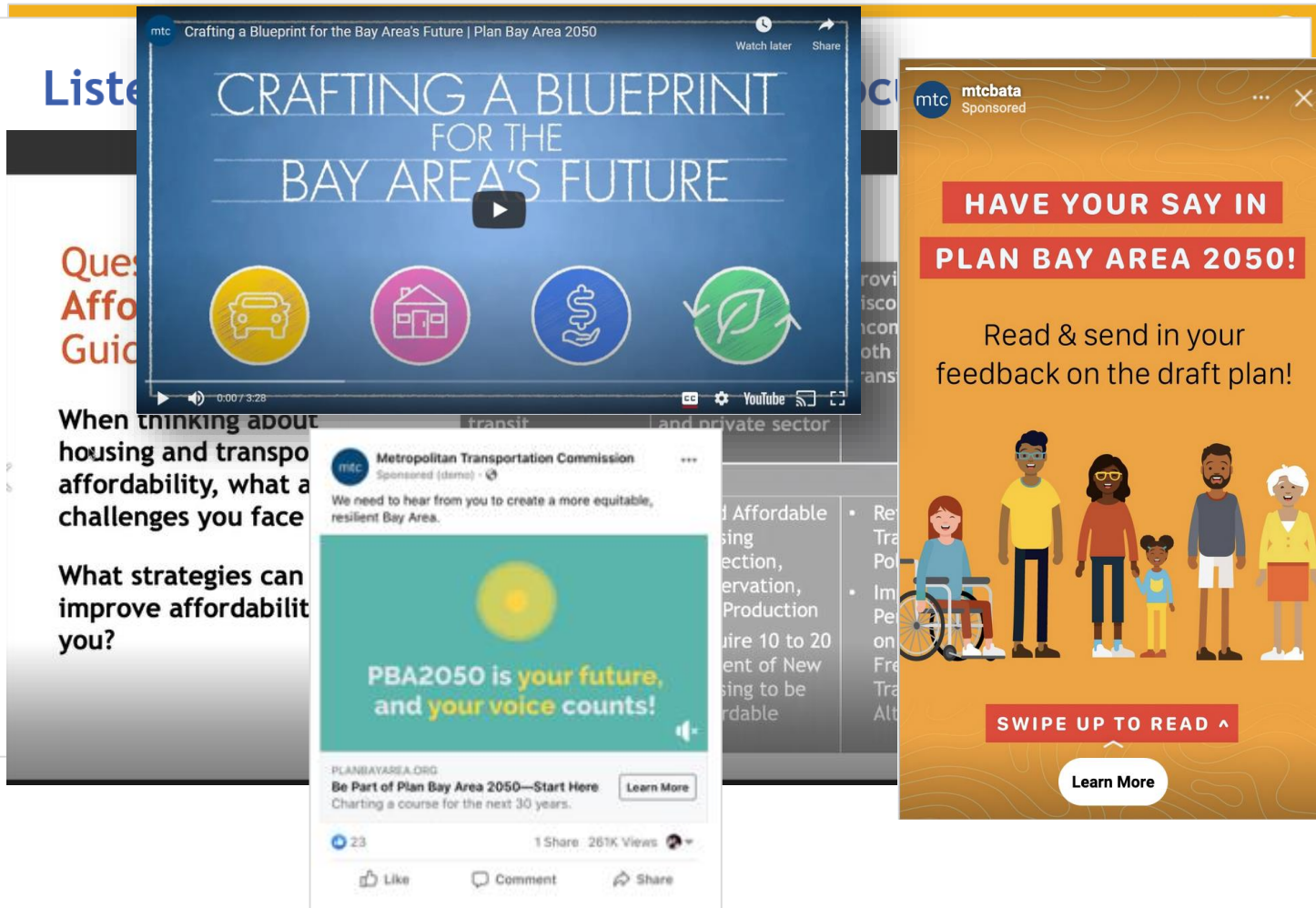
AREAS

Region-Wide

100%



Further Refining Strategies; Co-Creating New Strategies



Engaged with underserved communities with a **listen-and-learn approach**, in light of COVID-19 pandemic

Telephone town halls in multiple languages, targeted online surveys, tribal summits

Refined and introduced new strategies with stakeholders and advocates in virtual workshops



Addressing the Long-Standing Communities of Concern Framework

Updated with latest data;
sought input on shortcomings
 of existing mapping
 framework and proposed
 revising as Implementation
 Plan action

Revised nomenclature to
Equity Priority Communities,
 in collaboration with
 residents, REWG and Policy
 Advisory Council

MTC-ABAG

Near Term

Long Term

Staff acknowledges the power of language and recommends changing the nomenclature.

from Communities of Concern...

...to Equity Priority Communities

Prioritized Requirements for Nomenclature

- ✓ Positive, empowering, uplifting
- ✓ Forward-looking, action-oriented
- ✓ Communicate “priority” and intentionality
- ✓ Short and easily understood



Analyzing Outcomes and Where Investments are Targeted



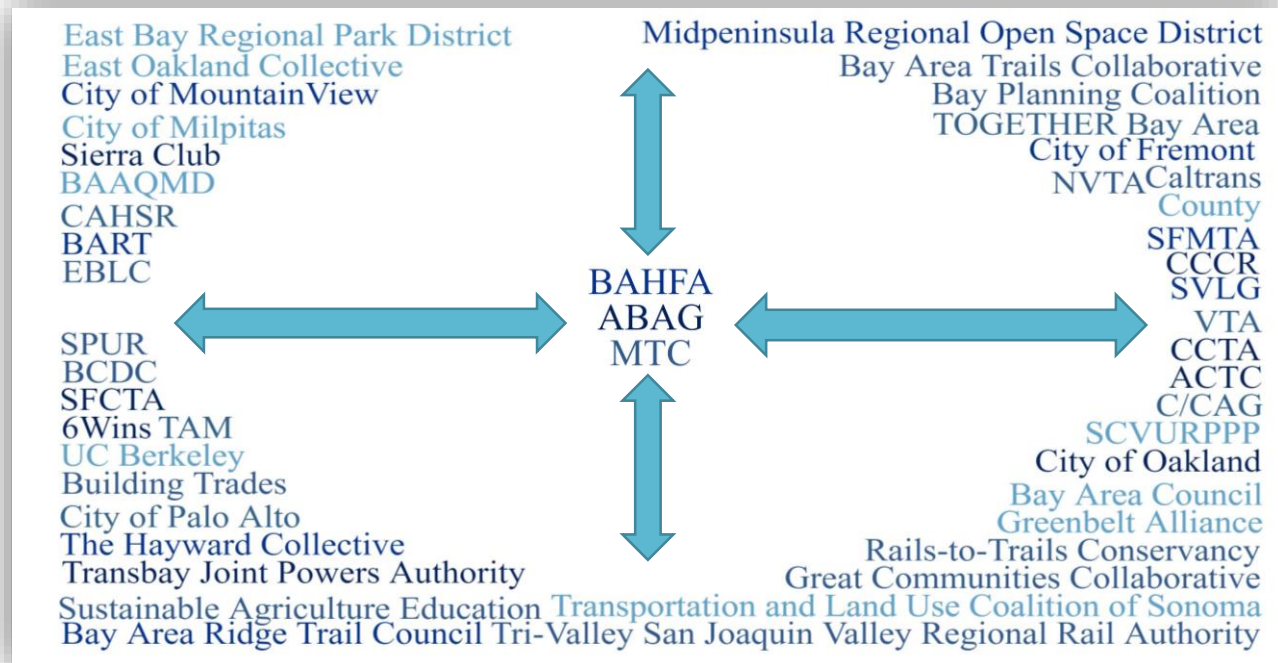
Analyzed equity and performance outcomes of Final Blueprint

Calculated how Final Blueprint investments benefit households with low incomes vs. other households

Released Draft Equity Analysis Report with Title VI and disparities analysis



Engaging with Partners to Put Plan into Action



Engaging in small group discussions and one-on-one dialogues with partners across government, business, labor non-profit and advocacy

Identifying specific near-term actions that MTC/ABAG will lead, partner or support

Agenda

- ✓ Horizon / PBA2050 Journey: Equity Focus

Known Limitations

Open Discussion

Close-Out and Survey



Reaching Underrepresented Populations

- Difficulty in reaching target audiences through digital engagement methods
- Challenges in expanding the roster of community-based organizations

Communication with Stakeholder Groups

- Overlapping priorities of different stakeholder groups
- Communication of in-depth analysis to diverse audiences

Analysis: Known Limitations



Equity Priority Communities Framework

- Accounting for changing definitions of low-income, differences across sub-regions and smaller block-group geographies; lowered concentrations due to continued displacement
- Balancing place-based and issue-based equity considerations

Forecasting Impacts by Race

- Lack of sufficient data to simulate future housing preferences or travel behavior by race
- Challenges in simulating behavior by race

Metrics Development

- Pinpointing future displacement risk arising from specific causes such as cost pressures
- Understanding future jobs-housing imbalance by wage level or job type

Agenda

- ✓ Horizon / PBA2050 Journey: Equity Focus
- ✓ Known Limitations

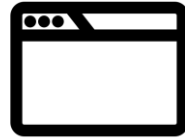
Open Discussion

Close-Out and Survey

Seeking your input...

Three topics
(~8 minutes each)

Engagement



Go to www.menti.com in your browser
Enter code: 9118 5985

Analysis



Raise your hand and speak up
(Or dial *6)

Process



What did you like
about the
engagement in
Plan Bay Area 2050?

What can we do
better in future
iterations of
Plan Bay Area?



What did you like
about the analysis in
Plan Bay Area 2050?

What can we do
better in future
iterations of
Plan Bay Area?



What did you like
about the process in
Plan Bay Area 2050?

What can we do
better in future
iterations of
Plan Bay Area?

Agenda

- ✓ Horizon / PBA2050 Journey: Equity Focus
- ✓ Known Limitations
- ✓ Open Discussion

Close-Out and Survey

We appreciate your
engagement.

Thank you.

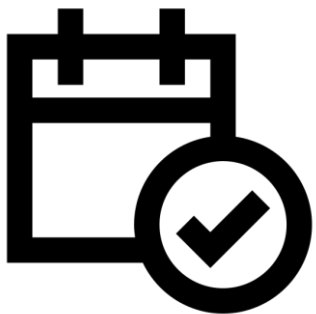


What's next for Plan Bay Area 2050?



Survey: <https://www.surveymonkey.com/r/SDS9CVD>

We want your feedback to further enhance equity in our future planning processes. *Please complete by September 17, 2021.*



October 2021

- Final Plan Bay Area 2050 Release (*including Final Plan Document, Final Implementation Plan and Final EIR*)
- Presentations to Public/Stakeholders + Elected Officials
- Proposed Adoption Meeting: October 21 at 5 PM

PLAN BAY AREA 2050

Thank you.

Contact Info:

Anup Tapase, atapase@bayareametro.gov