



# STATUTORILY REQUIRED PLAN MAPS

OCTOBER 2021



ASSOCIATION  
OF BAY AREA  
GOVERNMENTS



METROPOLITAN  
TRANSPORTATION  
COMMISSION

## Metropolitan Transportation Commission

### Alfredo Pedroza, Chair

Napa County and Cities

### Nick Josefowitz, Vice Chair

San Francisco Mayor's Appointee

### Margaret Abe-Koga

Cities of Santa Clara County

### Eddie H. Ahn

San Francisco Bay Conservation and Development Commission

### David Canepa

San Mateo County

### Cindy Chavez

Santa Clara County

### Damon Connolly

Marin County and Cities

### Carol Dutra-Vernaci

Cities of Alameda County

### Dina El-Tawansy

California State Transportation Agency

### Victoria Fleming

Sonoma County and Cities

### Dorene M. Giacopini

U.S. Department of Transportation

### Federal D. Glover

Contra Costa County

### Sam Liccardo

San José Mayor's Appointee

### Nate Miley

Alameda County

### Gina Papan

Cities of San Mateo County

### David Rabbitt

Association of Bay Area Governments

### Hillary Ronen

City and County of San Francisco

### Libby Schaaf

Oakland Mayor's Appointee

### James P. Spering

Solano County and Cities

### Amy R. Worth

Cities of Contra Costa County

### Vacant

U.S. Department of Housing and Urban Development

## Association of Bay Area Governments

### Jesse Arreguín, President

Mayor, City of Berkeley

### Belia Ramos, Vice President

Supervisor, County of Napa

### David Rabbitt, Immediate Past President

Supervisor, County of Sonoma

## County Representatives

### Candace Andersen

Supervisor, County of Contra Costa

### David Canepa

Supervisor, County of San Mateo

### Cindy Chavez

Supervisor, County of Santa Clara

### Otto Lee

Supervisor, County of Santa Clara

### Gordon Mar

Supervisor, City and County of San Francisco

### Rafael Mandelman

Supervisor, City and County of San Francisco

### Nate Miley

Supervisor, County of Alameda

### Karen Mitchoff

Supervisor, County of Contra Costa

### Stephanie Moulton-Peters

Supervisor, County of Marin

### James P. Spering

Supervisor, County of Solano

### Vacant

County of Alameda

### Vacant

County of San Mateo

## City Representatives

### Susan Adams

Councilmember, City of Rohnert Park

### Nikki Fortunato Bas

Councilmember, City of Oakland

### London Breed

Mayor, City and County of San Francisco

### Tom Butt

Mayor, City of Richmond

### Pat Eklund

Mayor, City of Novato

### Maya Esparza

Councilmember, City of San José

### Carroll Fife

Councilmember, City of Oakland

### Neysa Fligor

Mayor, City of Los Altos

### Leon Garcia

Mayor, City of American Canyon

### Liz Gibbons

Mayor, City of Campbell

### Giselle Hale

Vice Mayor, City of Redwood City

### Barbara Halliday

Mayor, City of Hayward

### Rich Hillis

Planning Director, City and County of San Francisco

### Dave Hudson

Mayor, City of San Ramon

### Matthew Mahan

Councilmember, City of San José

### Raul Peralez

Councilmember, City of San José

### Carlos Romero

Mayor, City of East Palo Alto

### Loren Taylor

Councilmember, City of Oakland

### Lori Wilson

Mayor, City of Suisun City

### Vacant

City and County of San Francisco (Mayor's Appointee)

## Advisory Member

### Jayne Battey

Board Member, San Francisco Bay Regional Water Quality Control Board



# PROJECT STAFF

Dave Vautin

**Plan Bay Area 2050 Project Manager**

Raleigh McCoy

**Statutorily Required Maps Project Manager**

Peter Beeler and Joshua Croff

**GIS Analysis and Cartography**

# ACKNOWLEDGEMENTS

Miguel A. Osorio

**Cover Design**



**ASSOCIATION  
OF BAY AREA  
GOVERNMENTS**

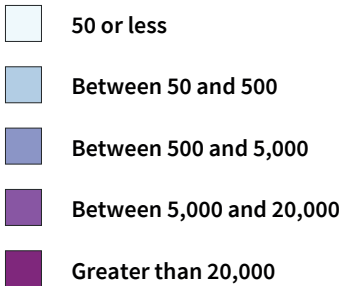
375 Beale Street, Suite 700  
San Francisco, CA 94105-2066  
[abag.ca.gov](http://abag.ca.gov) | 415.820.7900



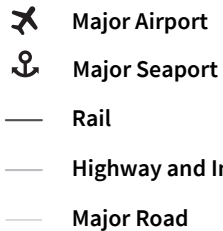
**METROPOLITAN  
TRANSPORTATION  
COMMISSION**

375 Beale Street, Suite 800  
San Francisco, CA 94105-2066  
[mtc.ca.gov](http://mtc.ca.gov) | 415.778.6700

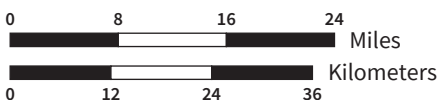
**MAP 1**  
**Households per Square Mile, 2050**



**REGIONAL TRANSPORTATION**

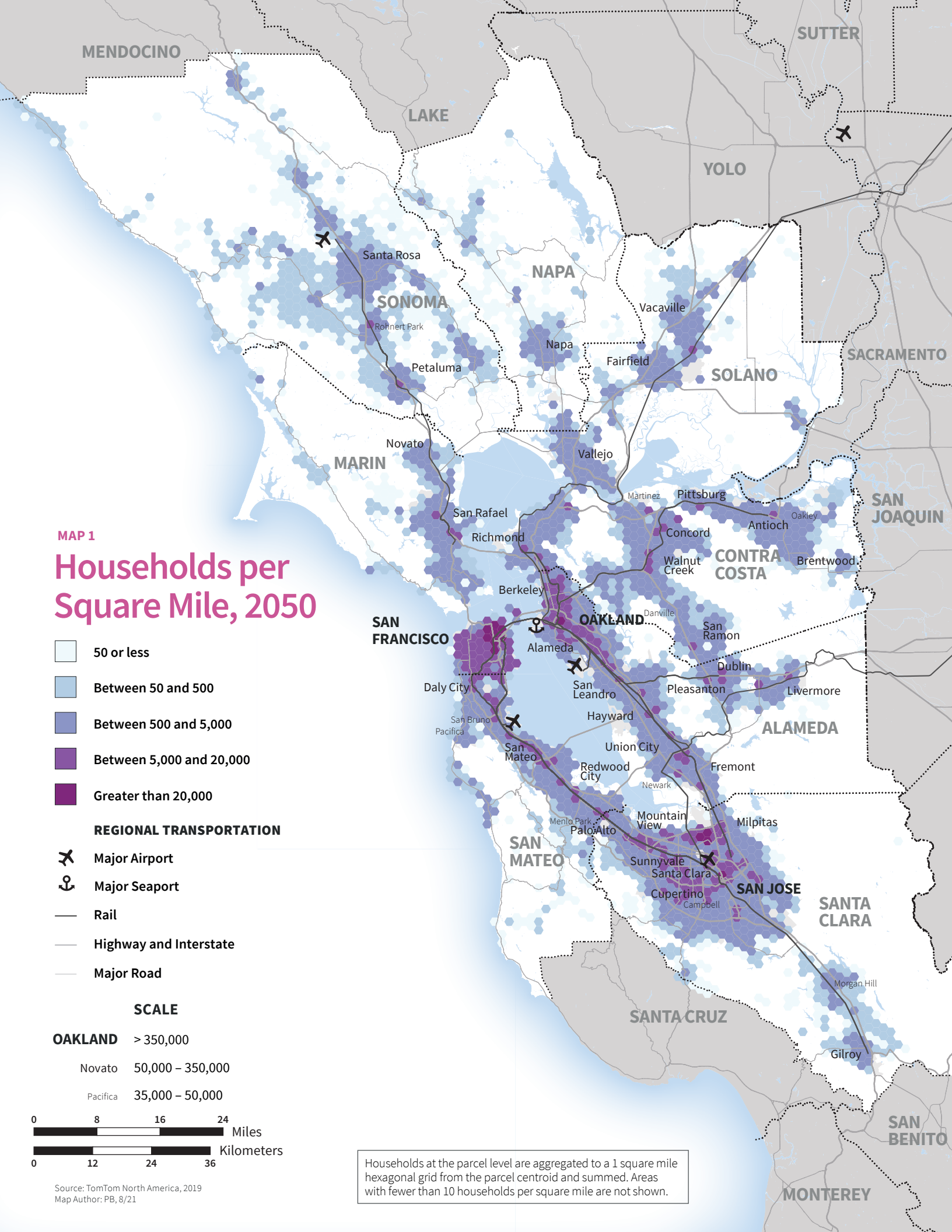


**SCALE**

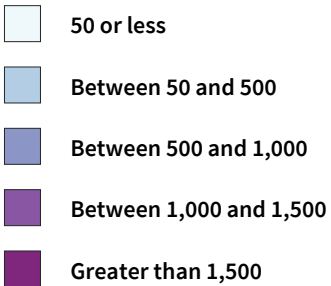


Source: TomTom North America, 2019  
 Map Author: PB, 8/21

Households at the parcel level are aggregated to a 1 square mile hexagonal grid from the parcel centroid and summed. Areas with fewer than 10 households per square mile are not shown.



MAP 2  
**Change in Households per Square Mile, 2015–2050**

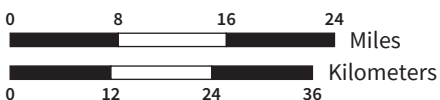


**REGIONAL TRANSPORTATION**

- Major Airport
- Major Seaport
- Rail
- Highway and Interstate
- Major Road

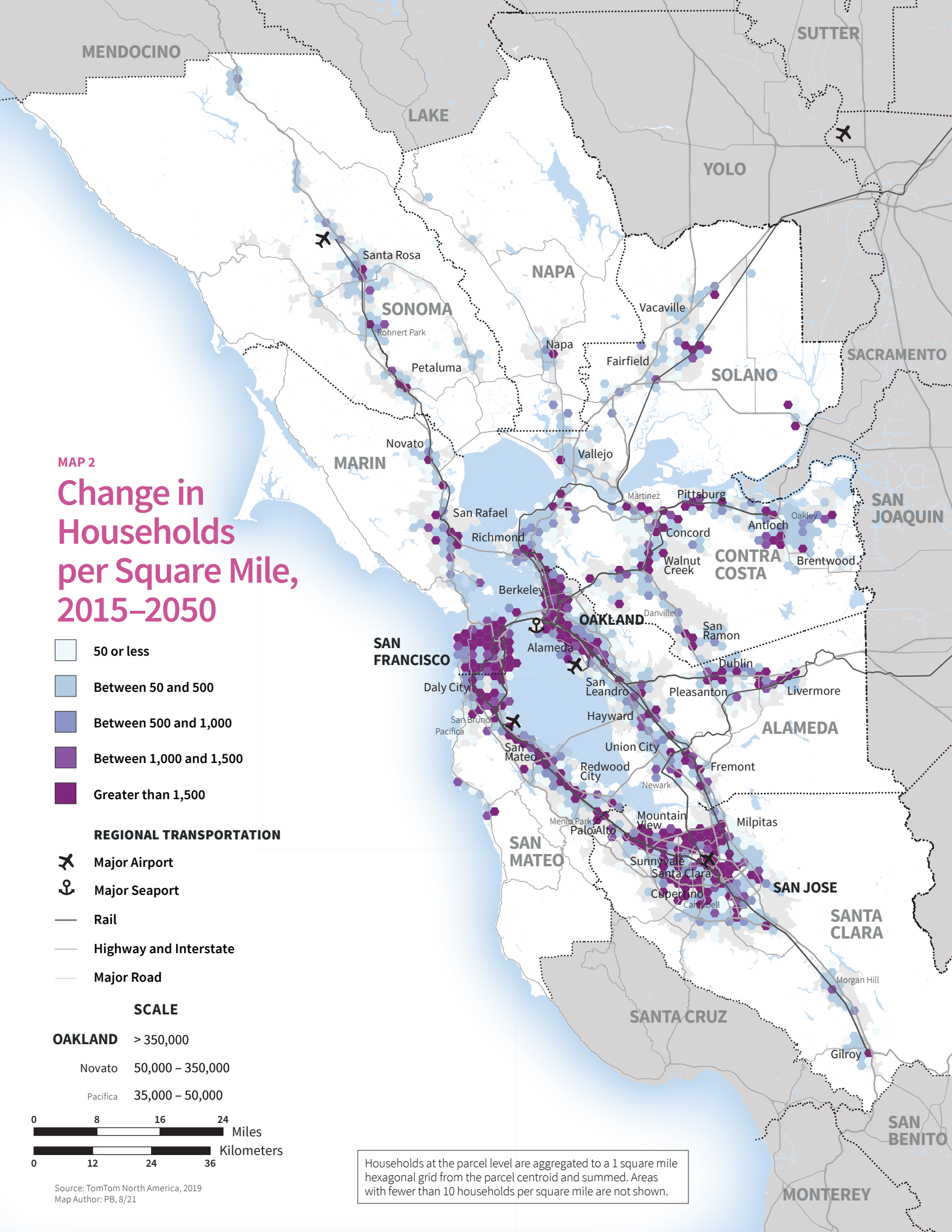
**SCALE**

- OAKLAND** > 350,000
- Novato 50,000 – 350,000
- Pacifica 35,000 – 50,000

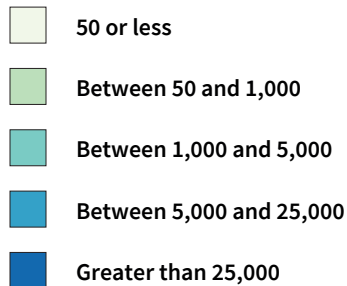


Source: TomTom North America, 2019  
 Map Author: PB, 8/21

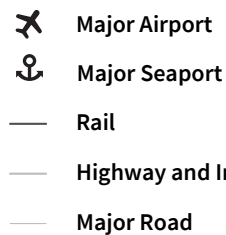
Households at the parcel level are aggregated to a 1 square mile hexagonal grid from the parcel centroid and summed. Areas with fewer than 10 households per square mile are not shown.



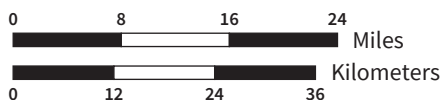
**MAP 3**  
**Jobs per Square Mile, 2050**



**REGIONAL TRANSPORTATION**

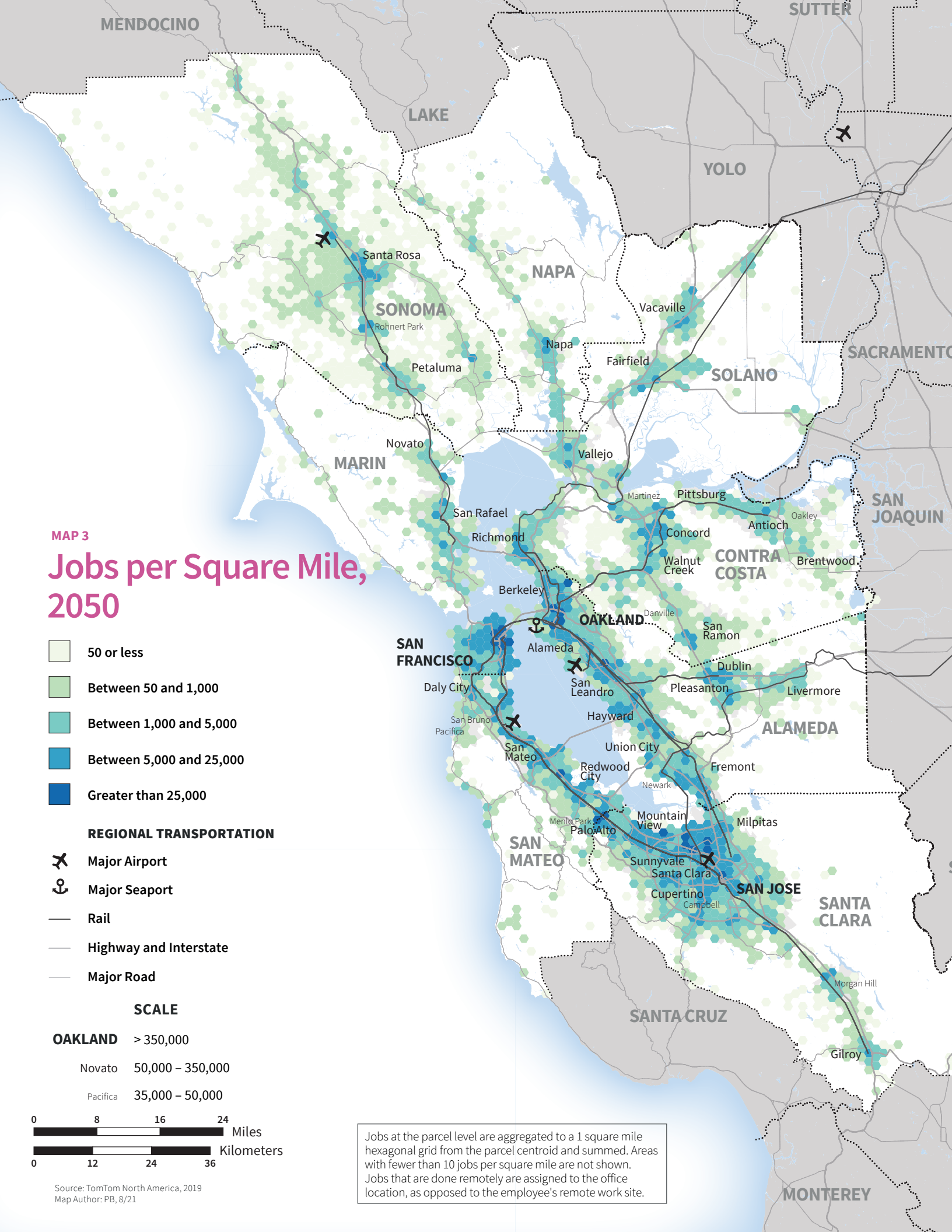


**SCALE**



Source: TomTom North America, 2019  
 Map Author: PB, 8/21

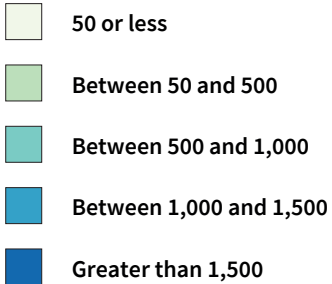
Jobs at the parcel level are aggregated to a 1 square mile hexagonal grid from the parcel centroid and summed. Areas with fewer than 10 jobs per square mile are not shown. Jobs that are done remotely are assigned to the office location, as opposed to the employee's remote work site.



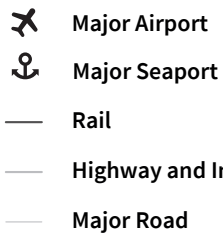


MAP 4

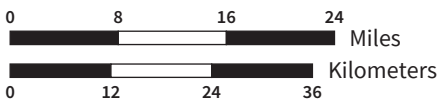
# Change in Jobs per Square Mile, 2015–2050



**REGIONAL TRANSPORTATION**



**SCALE**



Source: TomTom North America, 2019  
Map Author: PB, 8/21

Jobs at the parcel level are aggregated to a 1 square mile hexagonal grid from the parcel centroid and summed. Areas with fewer than 10 jobs per square mile are not shown. Jobs that are done remotely are assigned to the office location, as opposed to the employee's remote work site.

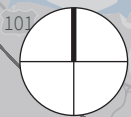
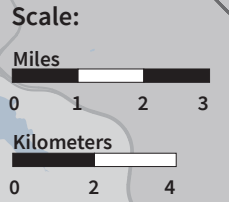


MAP 5  
**Resource  
 Lands:  
 Agriculture**  
 Alameda County

- Farmland**  
 Includes prime farmland, farmland of statewide & local importance, and unique farmland
- Grazing Lands**  
 Land on which the existing vegetation is suited to the grazing of livestock

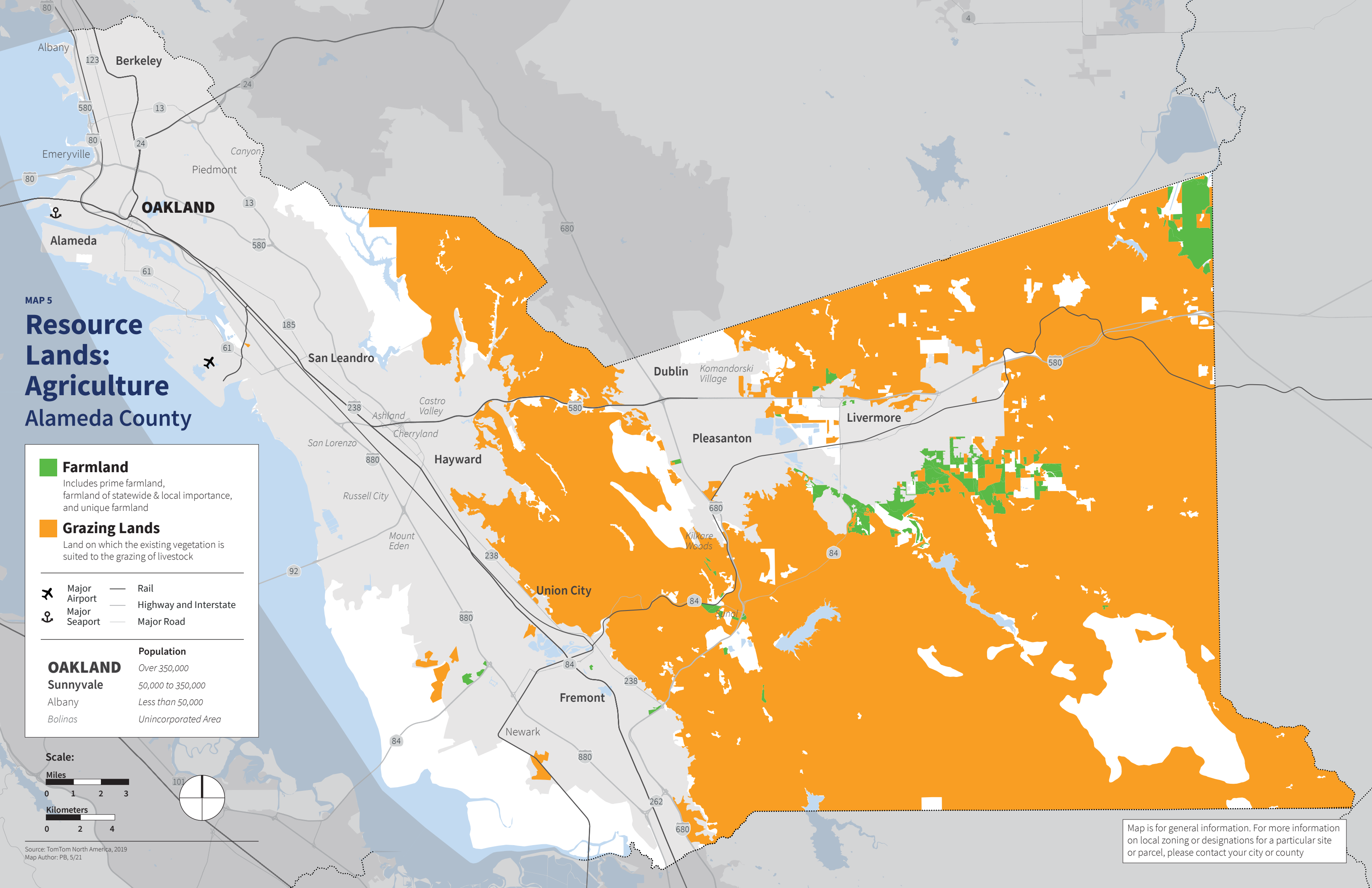
- Major Airport
- Major Seaport
- Rail
- Highway and Interstate
- Major Road

<b>OAKLAND</b>	<b>Population</b>
<b>Sunnyvale</b>	Over 350,000
Albany	50,000 to 350,000
Bolinas	Less than 50,000
	Unincorporated Area



Source: TomTom North America, 2019  
 Map Author: PB, 5/21

Map is for general information. For more information on local zoning or designations for a particular site or parcel, please contact your city or county





MAP 6  
**Resource  
 Lands:  
 Agriculture**  
 Contra Costa County

- Farmland**  
 Includes prime farmland, farmland of statewide & local importance, and unique farmland
- Grazing Lands**  
 Land on which the existing vegetation is suited to the grazing of livestock

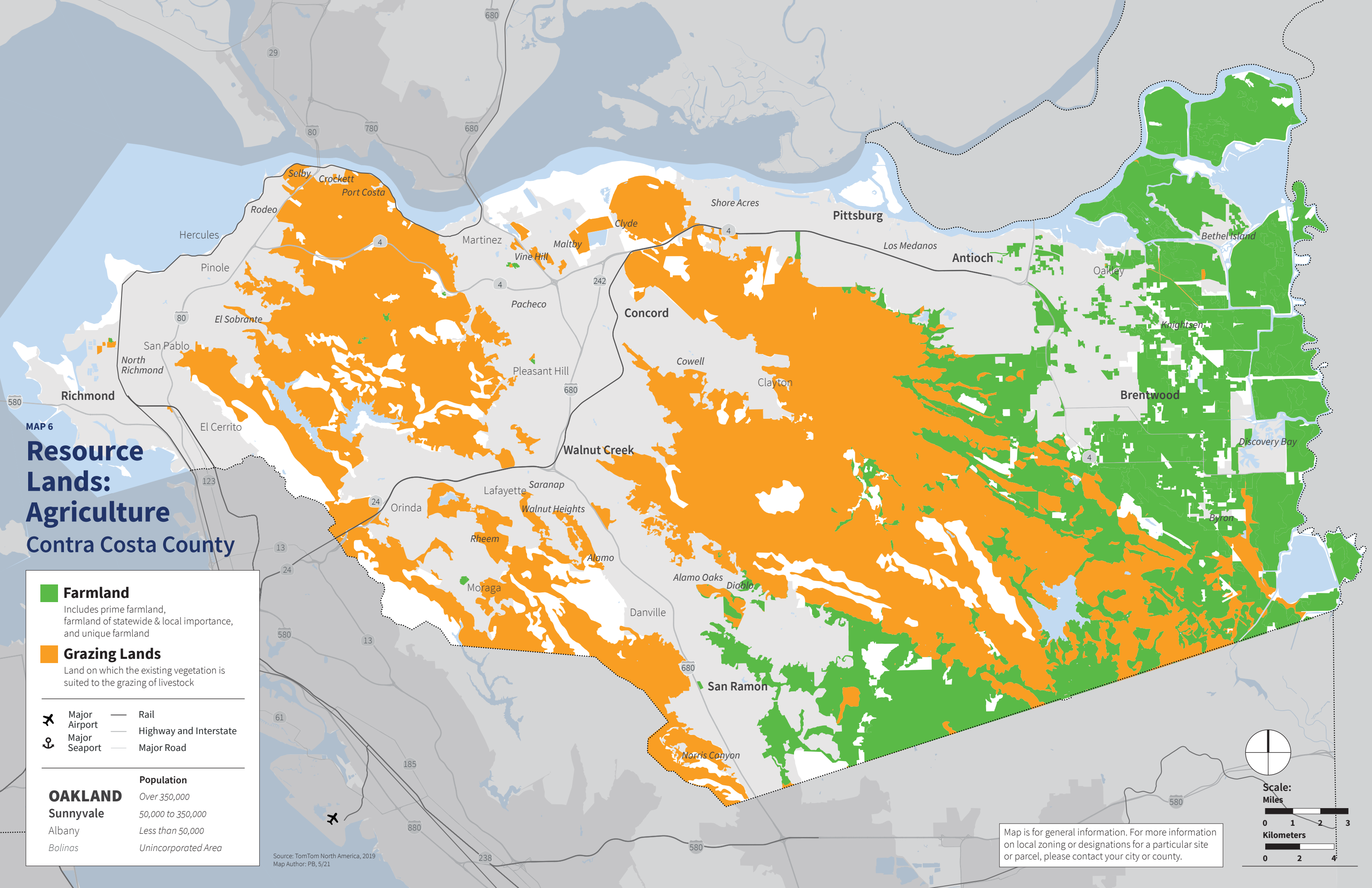
- Major Airport
- Major Seaport
- Rail
- Highway and Interstate
- Major Road

<b>OAKLAND</b>	<b>Population</b>
Sunnyvale	Over 350,000
Albany	50,000 to 350,000
Bolinas	Less than 50,000
	Unincorporated Area

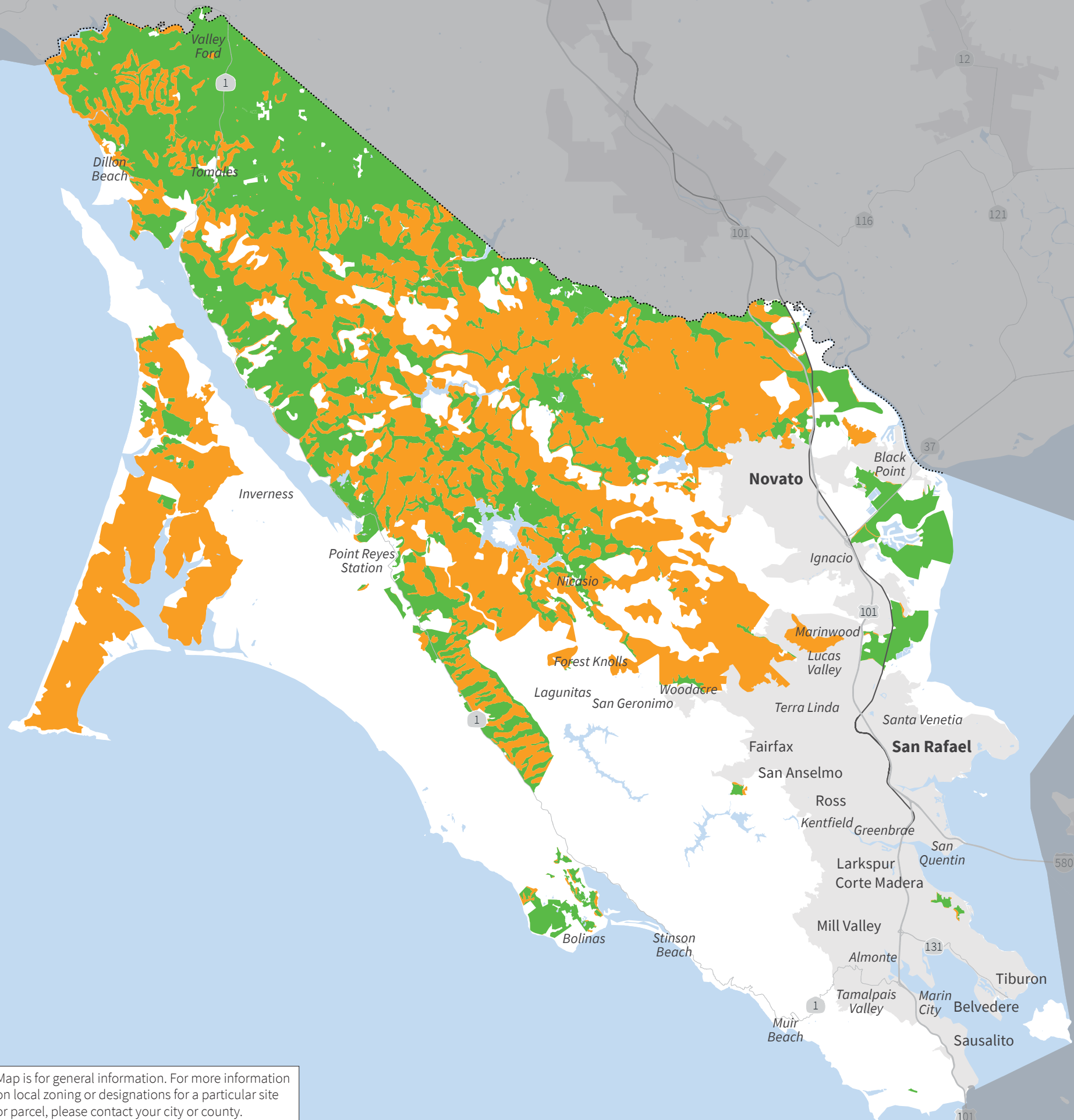
Source: TomTom North America, 2019  
 Map Author: PB, 5/21

Map is for general information. For more information on local zoning or designations for a particular site or parcel, please contact your city or county.

**Scale:**  
 Miles  
 0 1 2 3  
 Kilometers  
 0 2 4



MAP 7  
**Resource Lands:  
 Agriculture  
 Marin County**



**Farmland**  
 Includes prime farmland, farmland of statewide & local importance, and unique farmland

**Grazing Lands**  
 Land on which the existing vegetation is suited to the grazing of livestock

---

✈ Major Airport  
 ⚓ Major Seaport

— Rail  
 — Highway and Interstate  
 — Major Road

---

**OAKLAND** Over 350,000  
**Sunnyvale** 50,000 to 350,000  
 Albany Less than 50,000  
 Bolinas Unincorporated Area

**Scale:**  
 Miles 0 1 2 3  
 Kilometers 0 2 4

Map is for general information. For more information on local zoning or designations for a particular site or parcel, please contact your city or county.

Source: TomTom North America, 2019  
 Map Author: PB, 5/21

Cowell

Alamo Oaks

Danville



MAP 8  
**Resource  
 Lands:  
 Agriculture**  
 Napa County

**Farmland**  
 Includes prime farmland, farmland of statewide & local importance, and unique farmland

**Grazing Lands**  
 Land on which the existing vegetation is suited to the grazing of livestock

---

**Major Airport** **Rail**

**Major Seaport** **Highway and Interstate**

**Major Road**

---

**OAKLAND** **Population**

**Sunnyvale** Over 350,000

Albany 50,000 to 350,000

Bolinas Less than 50,000

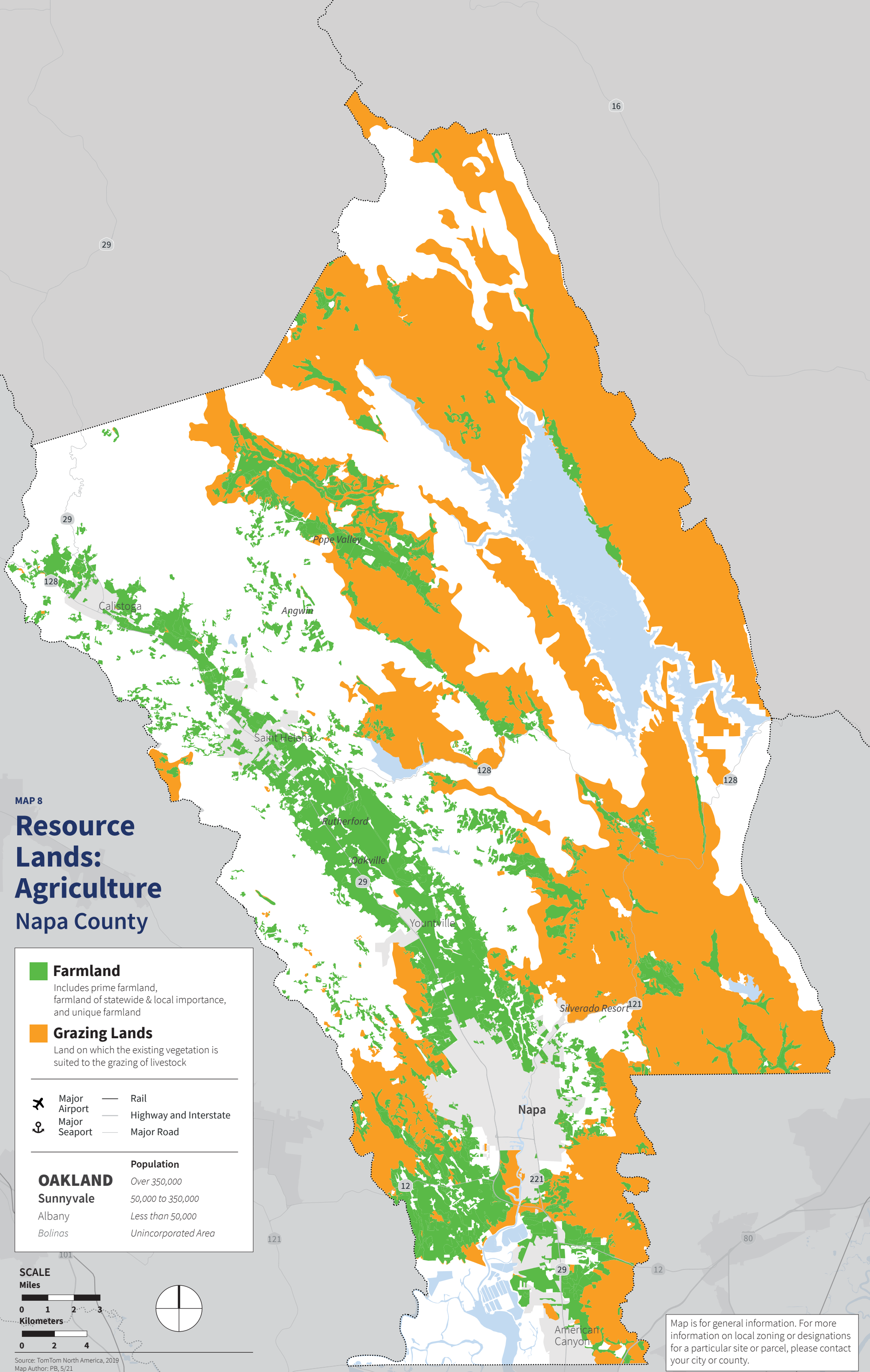
Unincorporated Area Unincorporated Area

**SCALE**

Miles

Kilometers

Source: TomTom North America, 2019  
 Map Author: PB, 5/21



Map is for general information. For more information on local zoning or designations for a particular site or parcel, please contact your city or county.

MAP 9

# Resource Lands: Agriculture San Mateo County

### Farmland

Includes prime farmland, farmland of statewide & local importance, and unique farmland

### Grazing Lands

Land on which the existing vegetation is suited to the grazing of livestock



Major Airport



Major Seaport

Rail

Highway and Interstate

Major Road

### OAKLAND

#### Population

Sunnyvale

Over 350,000

Albany

50,000 to 350,000

Bolinas

Less than 50,000

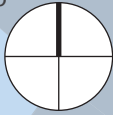
Unincorporated Area

#### Scale:

Miles



Kilometers

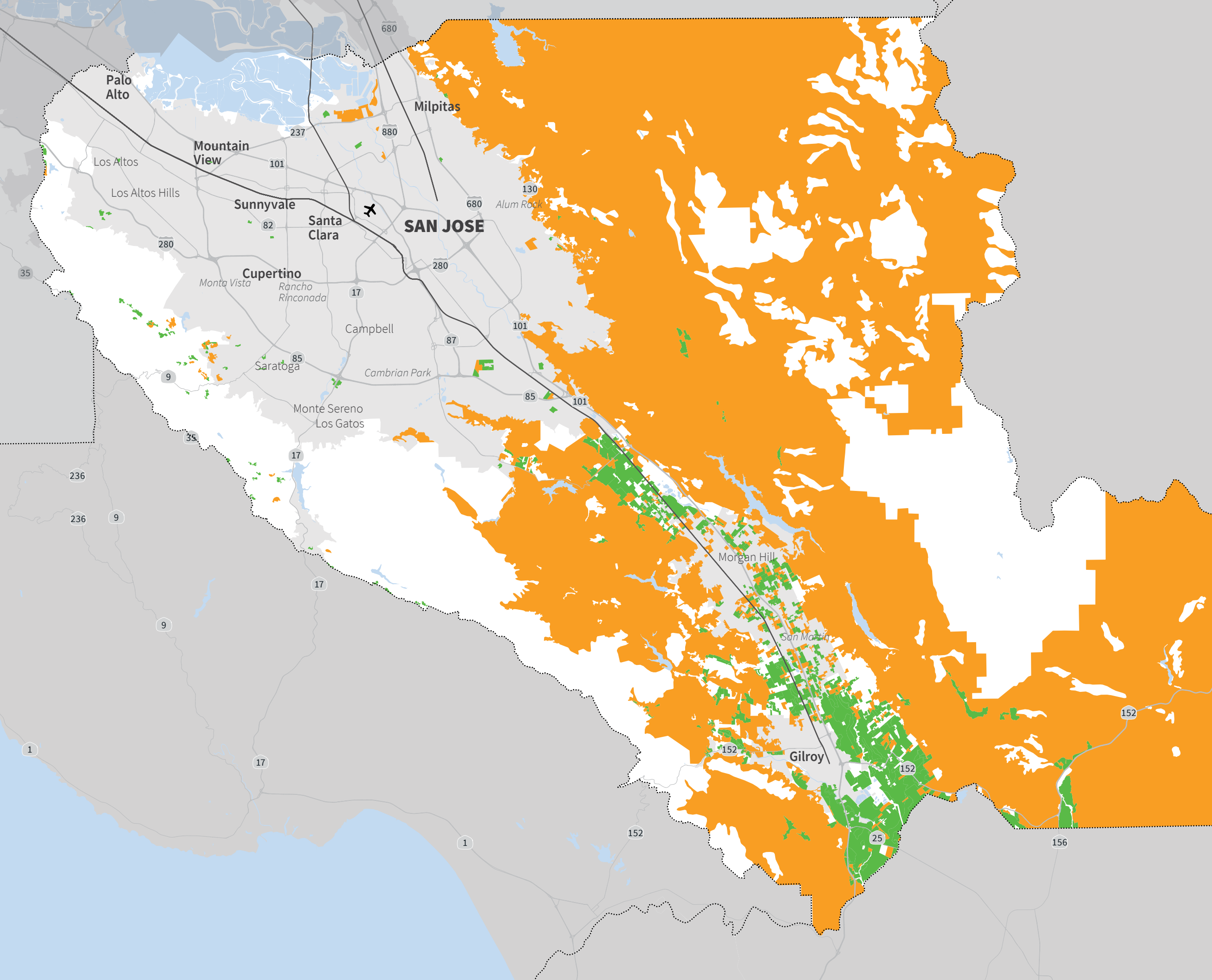


Source: TomTom North America, 2019  
Map Author: PB, 5/21

Map is for general information. For more information on local zoning or designations for a particular site or parcel, please contact your city or county.

# Resource Lands: Agriculture

## Santa Clara County



- Farmland**  
Includes prime farmland, farmland of statewide & local importance, and unique farmland
- Grazing Lands**  
Land on which the existing vegetation is suited to the grazing of livestock

- Major Airport
- Major Seaport
- Rail
- Highway and Interstate
- Major Road

Population	
<b>OAKLAND</b>	Over 350,000
<b>Sunnyvale</b>	50,000 to 350,000
Albany	Less than 50,000
Bolinas	Unincorporated Area

**Scale:**  
Miles: 0 1 2 3 4  
Kilometers: 0 2 4 6






Source: TomTom North America, 2019  
Map Author: PB, 5/21

Map is for general information. For more information on local zoning or designations for a particular site or parcel, please contact your city or county.

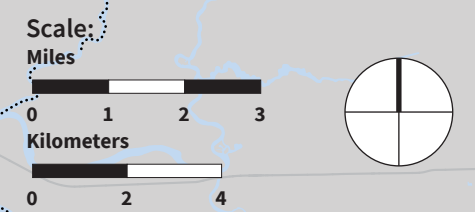


MAP 11  
**Resource Lands:  
 Agriculture**  
 Solano County

- **Farmland**  
 Includes prime farmland, farmland of statewide & local importance, and unique farmland
- **Grazing Lands**  
 Land on which the existing vegetation is suited to the grazing of livestock

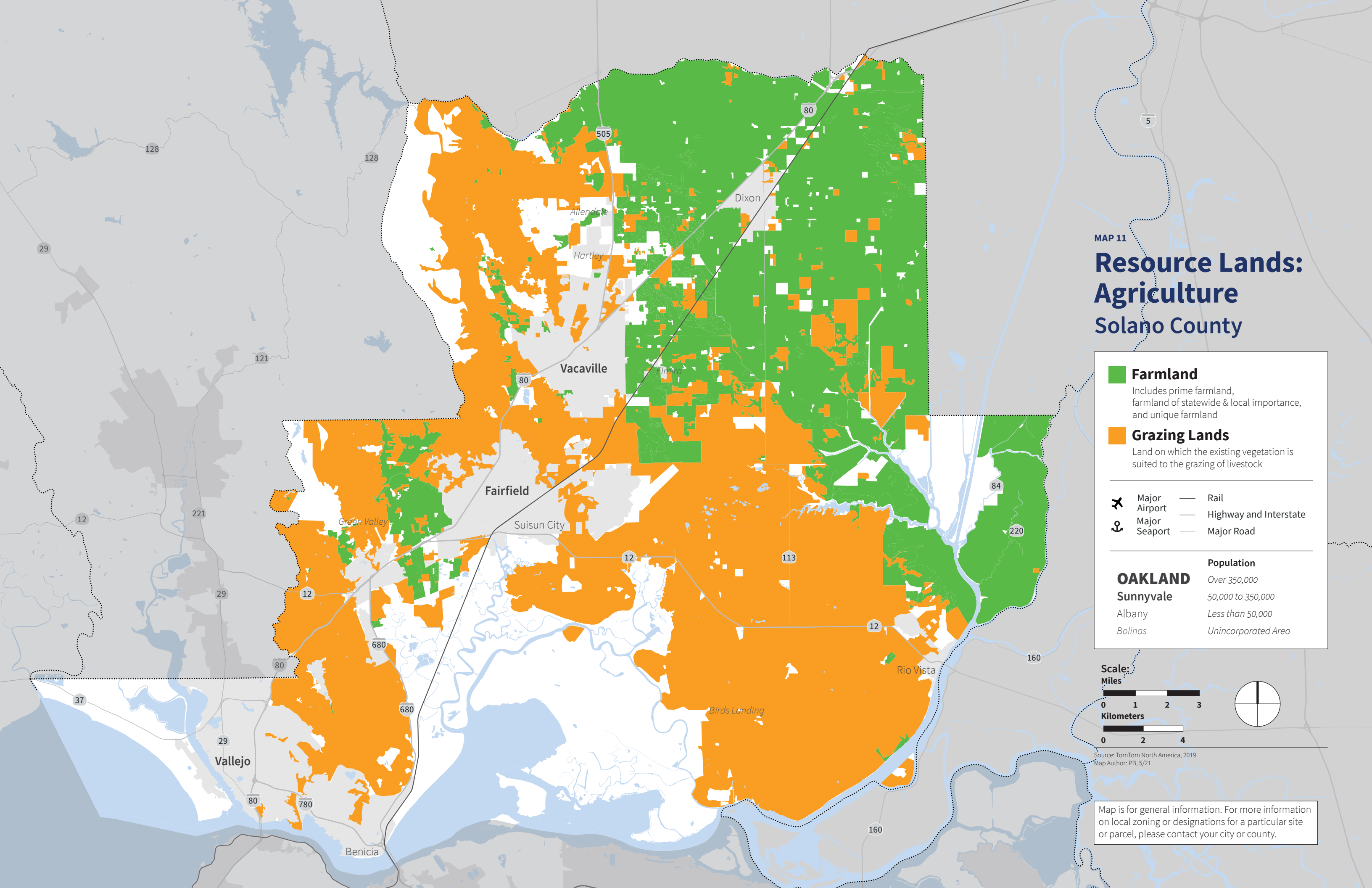
-  Major Airport
-  Major Seaport
-  Rail
-  Highway and Interstate
-  Major Road

OAKLAND	
<b>Sunnyvale</b>	Over 350,000
Albany	50,000 to 350,000
Bolinas	Less than 50,000
	Unincorporated Area



Source: TomTom North America, 2019  
 Map Author: PB, 5/21

Map is for general information. For more information on local zoning or designations for a particular site or parcel, please contact your city or county.



MAP 12




# Resource Lands: Agriculture Sonoma County

## Farmland

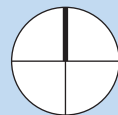
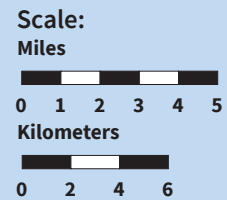
Includes prime farmland, farmland of statewide & local importance, and unique farmland

## Grazing Lands

Land on which the existing vegetation is suited to the grazing of livestock

-  Major Airport
-  Major Seaport
-  Rail
-  Highway and Interstate
-  Major Road

OAKLAND	
Sunnyvale	Over 350,000
Albany	50,000 to 350,000
Bolinas	Less than 50,000
	Unincorporated Area



Source: TomTom North America, 2019  
Map Author: PB, 5/21

Map is for general information. For more information on local zoning or designations for a particular site or parcel, please contact your city or county.



MAP 13  
**Natural Lands**  
 Alameda County

- Conservation Lands**  
Includes CPAD open space, Williamson Act parcels and Conservation Easements
- Critical Habitat**
- Priority Conservation Areas**
- Flood Risk Areas**

- Major Airport
- Major Seaport
- Rail
- Highway and Interstate
- Major Road

**OAKLAND** Over 350,000

**Sunnyvale** 50,000 to 350,000

Albany Less than 50,000

Bolinas Unincorporated Area



Source: TomTom North America, 2019  
 Map Author: PB, 7/21

Map is for general information. For more information on local zoning or designations for a particular site or parcel, please contact your city or county



**MAP 14**  
**Natural Lands**  
**Contra Costa County**


- Conservation Lands**  
 Includes CPAD open space, Williamson Act parcels and Conservation Easements
- Critical Habitat**
- Priority Conservation Areas**
- Flood Risk Areas**

- Major Airport
- Major Seaport
- Rail
- Highway and Interstate
- Major Road


<b>OAKLAND</b>	<b>Population</b>
Sunnyvale	Over 350,000
Albany	50,000 to 350,000
Bolinas	Less than 50,000
	Unincorporated Area

Source: TomTom North America, 2019  
 Map Author: PB, 7/21


Map is for general information. For more information on local zoning or designations for a particular site or parcel, please contact your city or county.

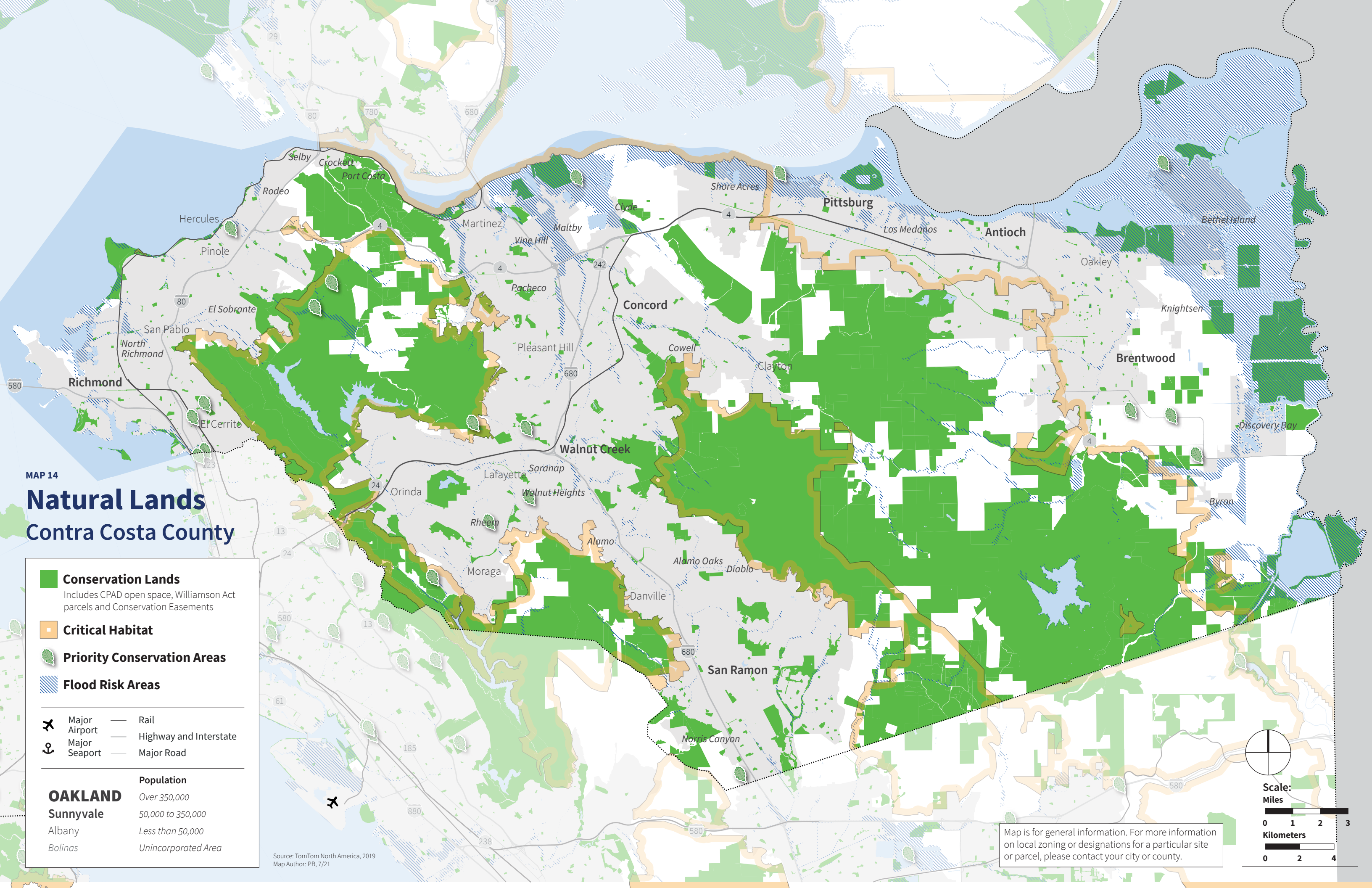


**Scale:**  
 Miles



**Kilometers**







MAP 15  
**Natural  
 Lands**  
 Marin County

**Conservation Lands**  
 Includes CPAD open space, Williamson Act parcels and Conservation Easements

**Critical Habitat**

**Priority Conservation Areas**

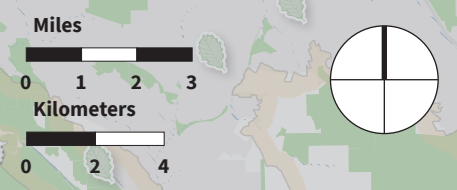
**Flood Risk Areas**

---

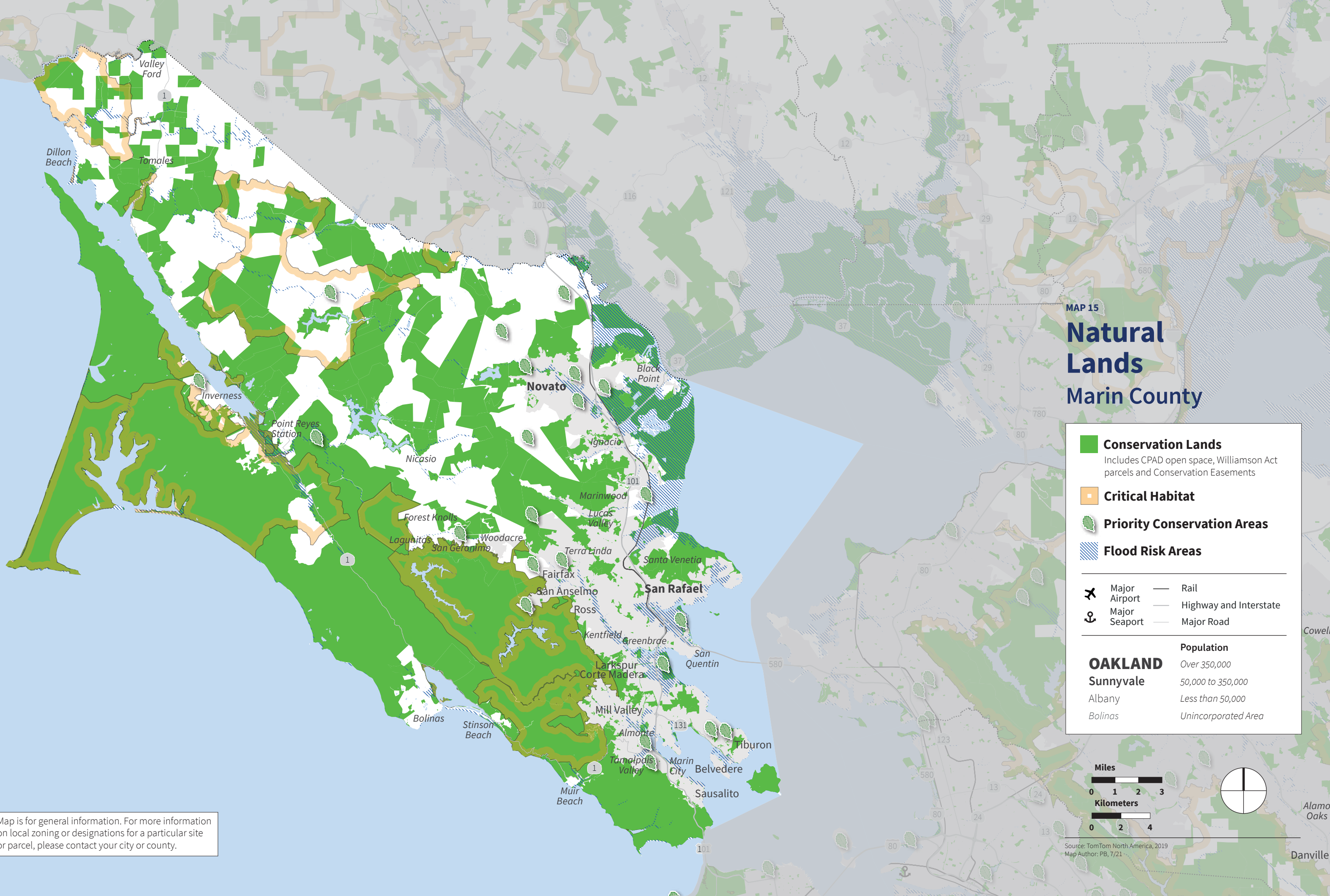
**Major Airport**     **Rail**  
**Major Seaport**     **Highway and Interstate**  
                                  **Major Road**

---

	<b>Population</b>
<b>OAKLAND</b>	Over 350,000
<b>Sunnyvale</b>	50,000 to 350,000
Albany	Less than 50,000
Bolinas	Unincorporated Area












Map is for general information. For more information on local zoning or designations for a particular site or parcel, please contact your city or county.




Source: TomTom North America, 2019  
 Map Author: PB, 7/21



MAP 16  
**Natural Lands**  
 Napa County

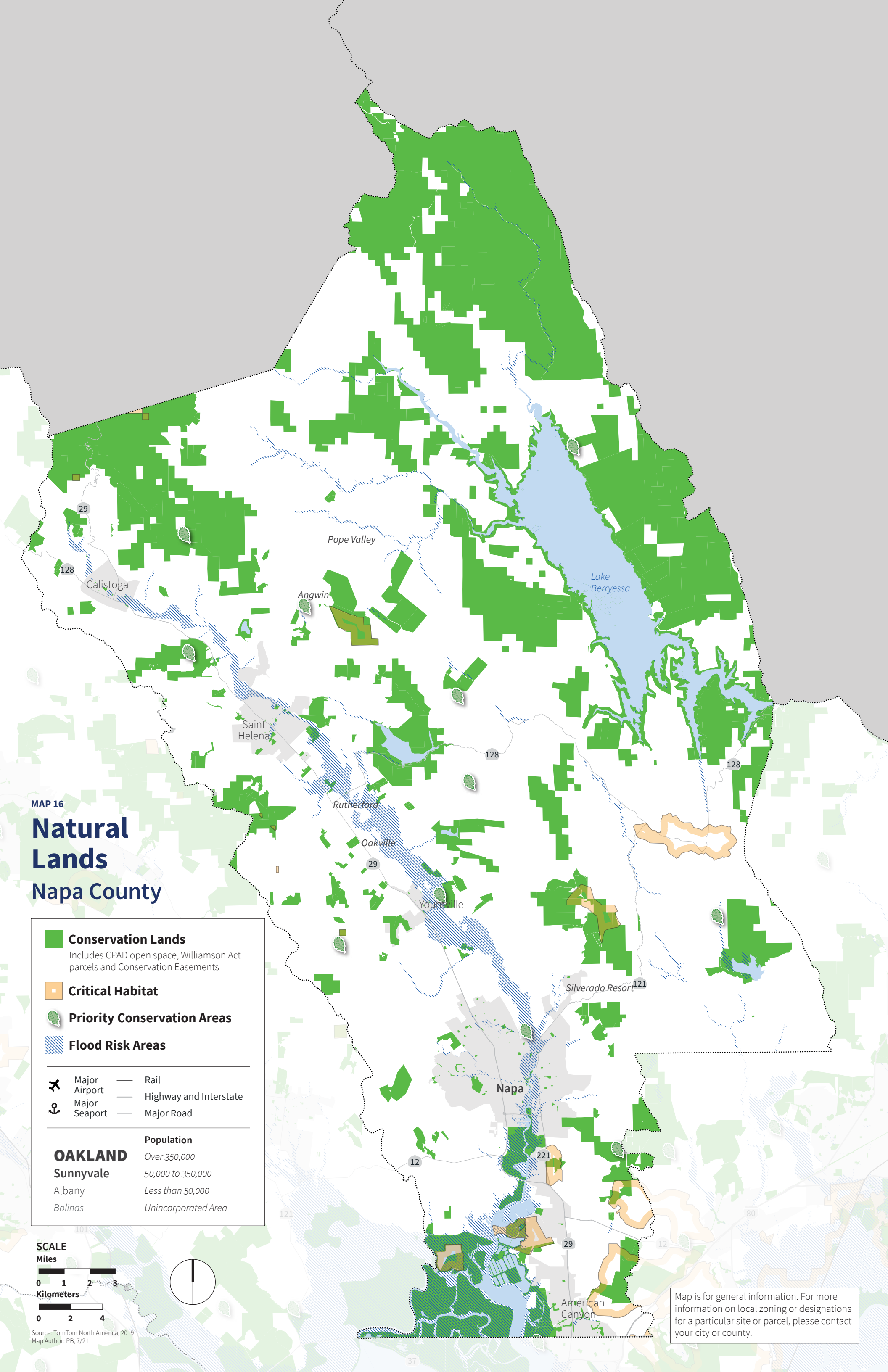
	<b>Conservation Lands</b> Includes CPAD open space, Williamson Act parcels and Conservation Easements
	<b>Critical Habitat</b>
	<b>Priority Conservation Areas</b>
	<b>Flood Risk Areas</b>
	Major Airport
	Major Seaport
	Rail
	Highway and Interstate
	Major Road
<b>OAKLAND</b>	Over 350,000
<b>Sunnyvale</b>	50,000 to 350,000
Albany	Less than 50,000
Bolinas	Unincorporated Area

**SCALE**  
 Miles  
 0 1 2 3  
 Kilometers  
 0 2 4



Source: TomTom North America, 2019  
 Map Author: PB, 7/21

Map is for general information. For more information on local zoning or designations for a particular site or parcel, please contact your city or county.












Map is for general information. For more information on local zoning or designations for a particular site or parcel, please contact your city or county.

MAP 17

# Natural Lands


## City and County of San Francisco

-  **Conservation Lands**  
Includes CPAD open space, Williamson Act parcels and Conservation Easements
-  **Critical Habitat**
-  **Priority Conservation Areas**
-  **Flood Risk Areas**


-  Major Airport
-  Rail
-  Highway and Interstate
-  Major Seaport
-  Major Road

	Population
<b>OAKLAND</b>	Over 350,000
<b>Sunnyvale</b>	50,000 to 350,000
Albany	Less than 50,000
Bolinas	Unincorporated Area

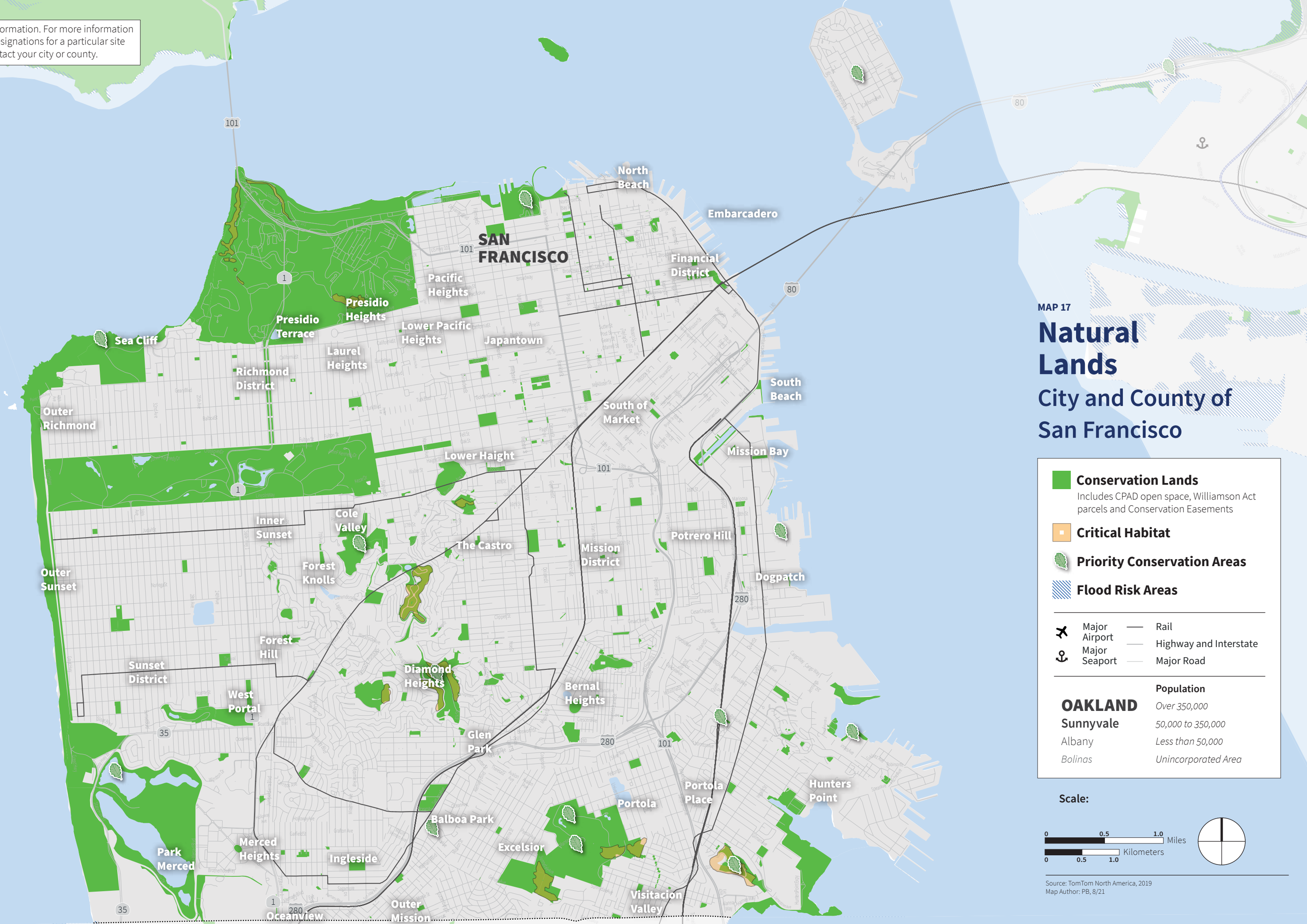
Scale:



0 0.5 1.0 Miles  
0 0.5 1.0 Kilometers



Source: TomTom North America, 2019  
Map Author: PB, 8/21





# Natural Lands San Mateo County

**Conservation Lands**  
Includes CPAD open space, Williamson Act parcels and Conservation Easements

**Critical Habitat**

**Priority Conservation Areas**

**Flood Risk Areas**

**Major Airport** **Rail**  
**Major Seaport** **Highway and Interstate**  
**Major Road**

**OAKLAND**

**Sunnyvale**

Albany

Bolinas

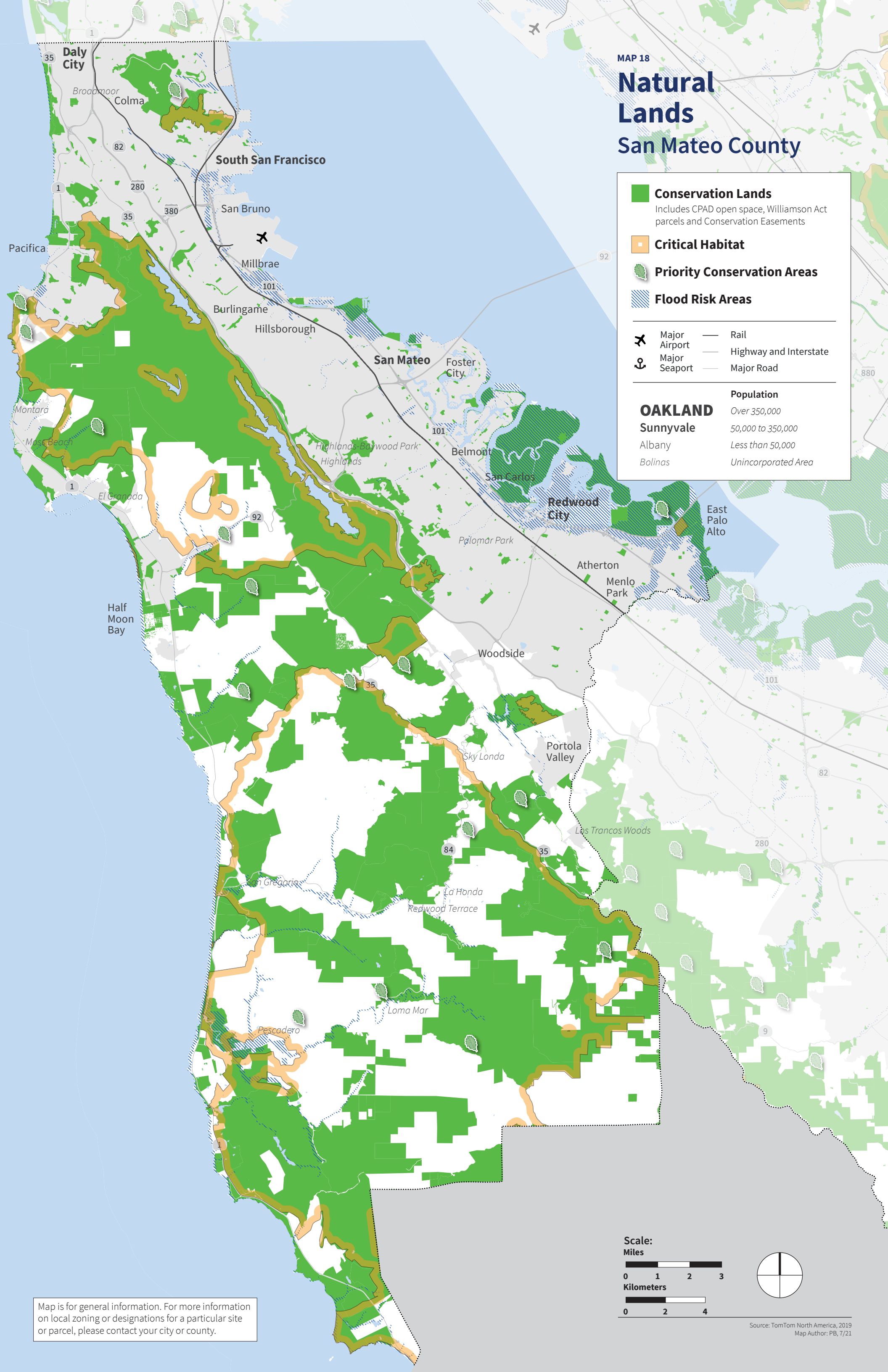
**Population**

Over 350,000

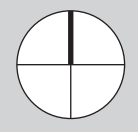
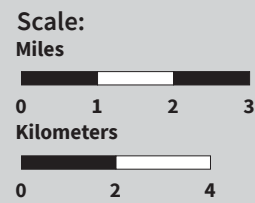
50,000 to 350,000

Less than 50,000

Unincorporated Area

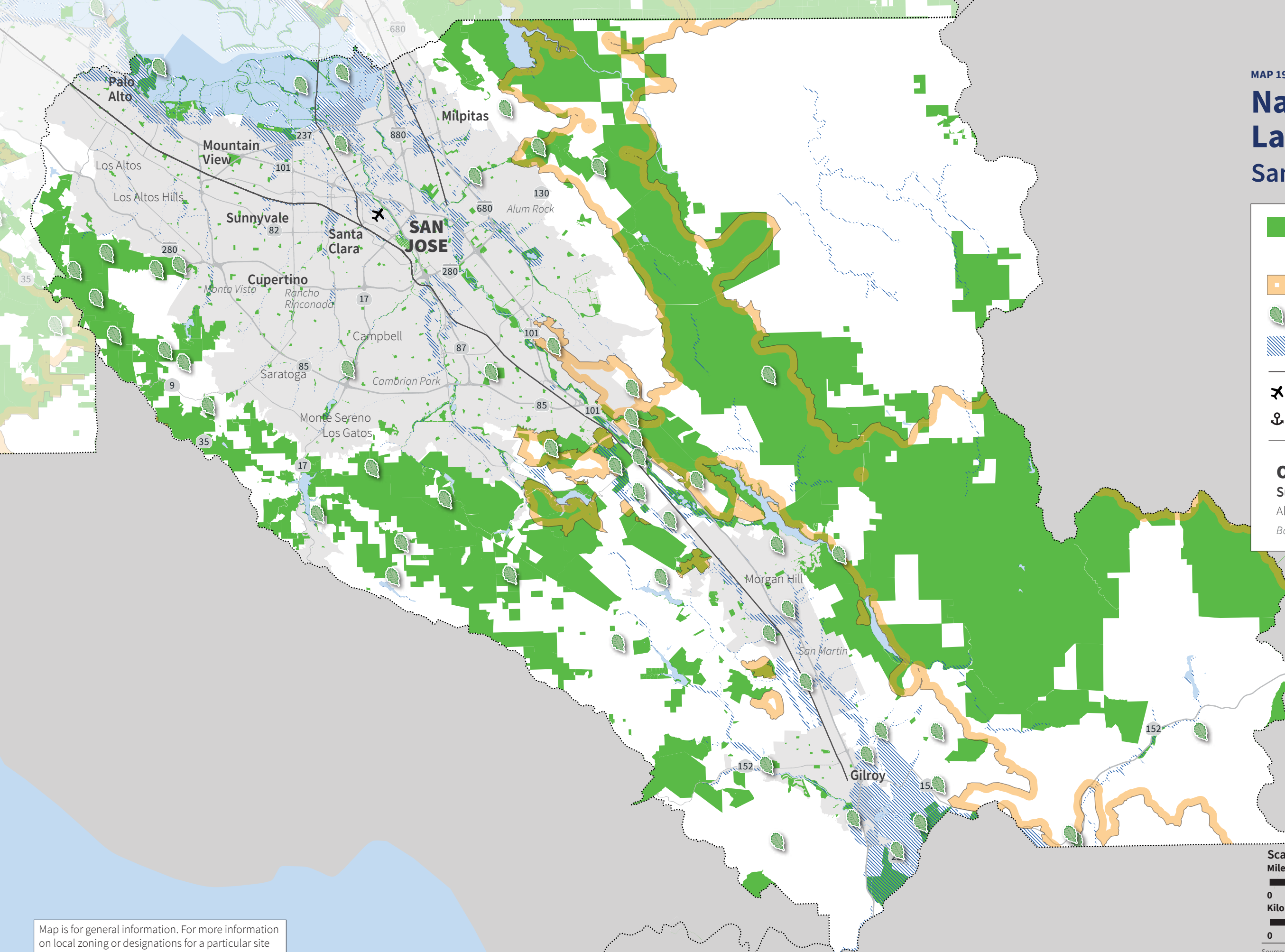


Map is for general information. For more information on local zoning or designations for a particular site or parcel, please contact your city or county.



# Natural Lands

## Santa Clara County



**Conservation Lands**  
Includes CPAD open space, Williamson Act parcels and Conservation Easements

**Critical Habitat**

**Priority Conservation Areas**

**Flood Risk Areas**

---

**Major Airport** (Airplane icon)  
**Major Seaport** (Anchor icon)  
**Rail** (Dashed line icon)  
**Highway and Interstate** (Thick solid line icon)  
**Major Road** (Thin solid line icon)

---

**Population**

<b>OAKLAND</b>	Over 350,000
<b>Sunnyvale</b>	50,000 to 350,000
Albany	Less than 50,000
Bolinas	Unincorporated Area

Map is for general information. For more information on local zoning or designations for a particular site or parcel, please contact your city or county.

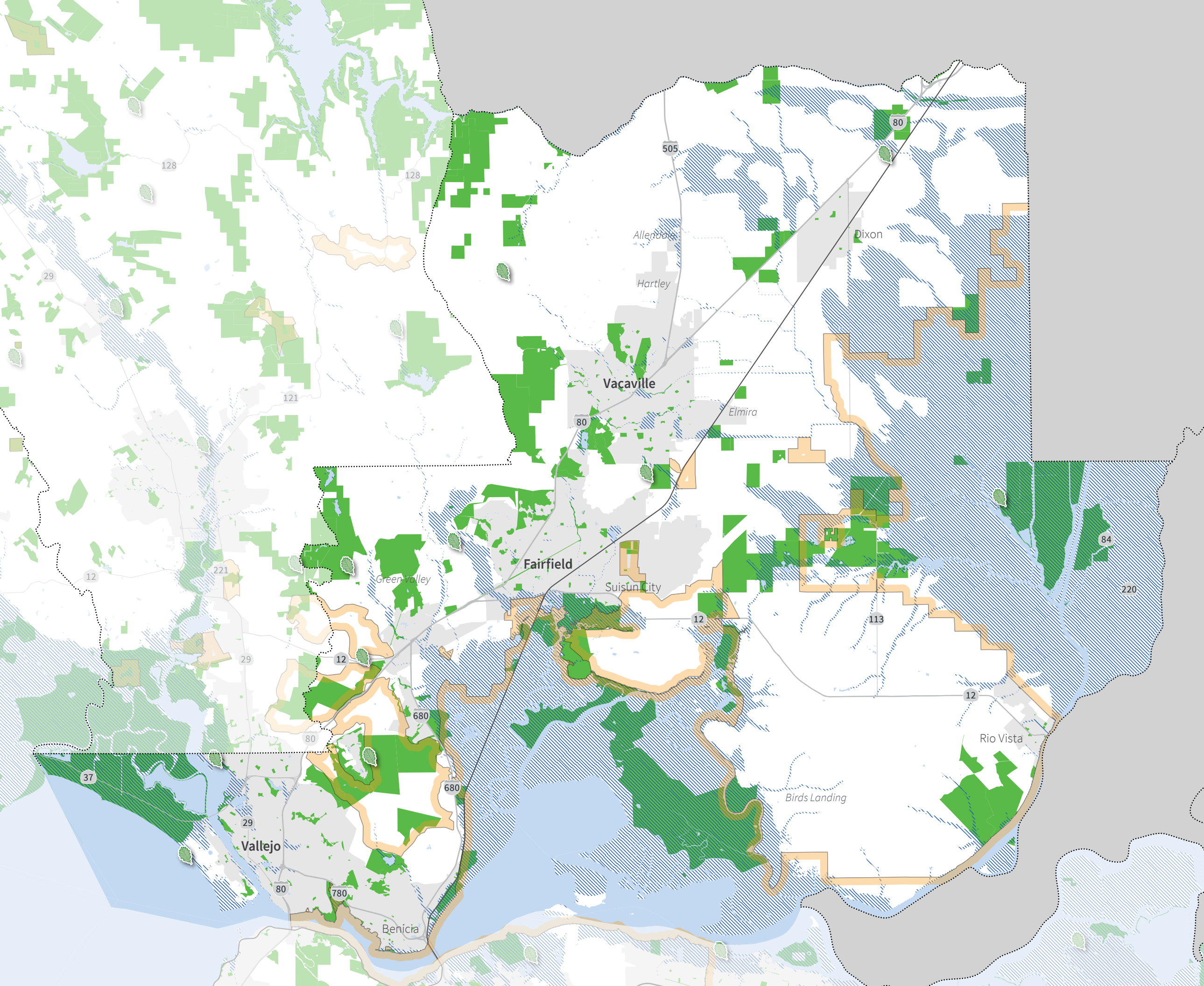




MAP 20

# Natural Lands

## Solano County



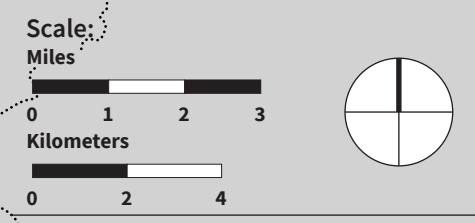
- Conservation Lands**  
Includes CPAD open space, Williamson Act parcels and Conservation Easements
- Critical Habitat**
- Priority Conservation Areas**
- Flood Risk Areas**

---

- Major Airport
- Major Seaport
- Rail
- Highway and Interstate
- Major Road

---

	Population
<b>OAKLAND</b>	Over 350,000
<b>Sunnyvale</b>	50,000 to 350,000
Albany	Less than 50,000
Bolinas	Unincorporated Area



Source: TomTom North America, 2019  
Map Author: PB, 7/21

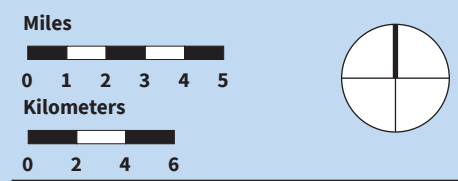
Map is for general information. For more information on local zoning or designations for a particular site or parcel, please contact your city or county.

MAP 21  
**Natural  
 Lands**  
 Sonoma County

- Conservation Lands**  
 Includes CPAD open space, Williamson Act parcels and Conservation Easements
- Critical Habitat**
- Priority Conservation Areas**
- Flood Risk Areas**

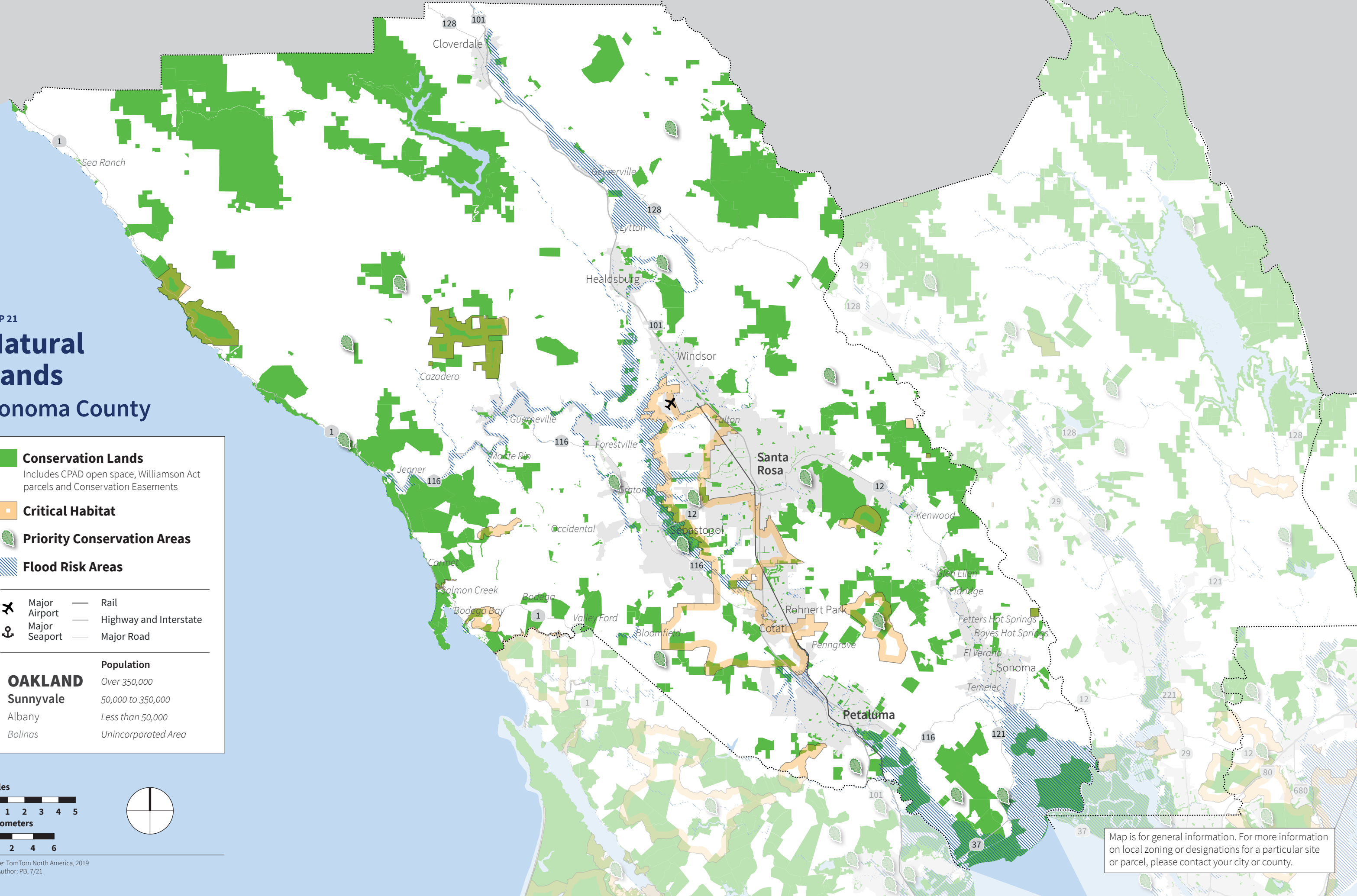
- Major Airport
- Major Seaport
- Rail
- Highway and Interstate
- Major Road

<b>OAKLAND</b>	Population
Sunnyvale	Over 350,000
Albany	50,000 to 350,000
Bolinas	Less than 50,000
	Unincorporated Area



Source: TomTom North America, 2019  
 Map Author: PB, 7/21

Map is for general information. For more information on local zoning or designations for a particular site or parcel, please contact your city or county.





**Metropolitan Transportation Commission  
and Association of Bay Area Governments**

**Management Staff**

**Therese W. McMillan**

Executive Director

**Alix Bockelman**

Deputy Executive Director, Policy

**Andrew B. Fremier**

Deputy Executive Director, Operations

**Bradford Paul**

Deputy Executive Director, Local Government Services

**Kathleen Kane**

General Counsel

**Brian Mayhew**

Chief Financial Officer

**Matt Maloney**

Section Director, Regional Planning Program

**Theresa Romell**

Section Director, Funding Policy and Programs

**Randy Rentschler**

Section Director, Legislation and Public Affairs